

AUXILIARY BATTERY BOX SELECTION GUIDE



Auxiliary Battery Box Overview

Function:

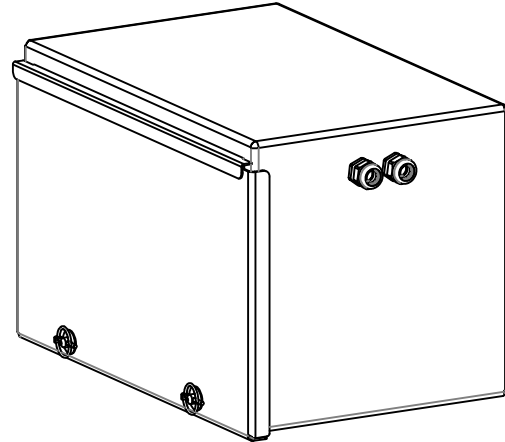
-To provide the adequate power and capacity to the liftgate's power unit

Vehicle Applications:

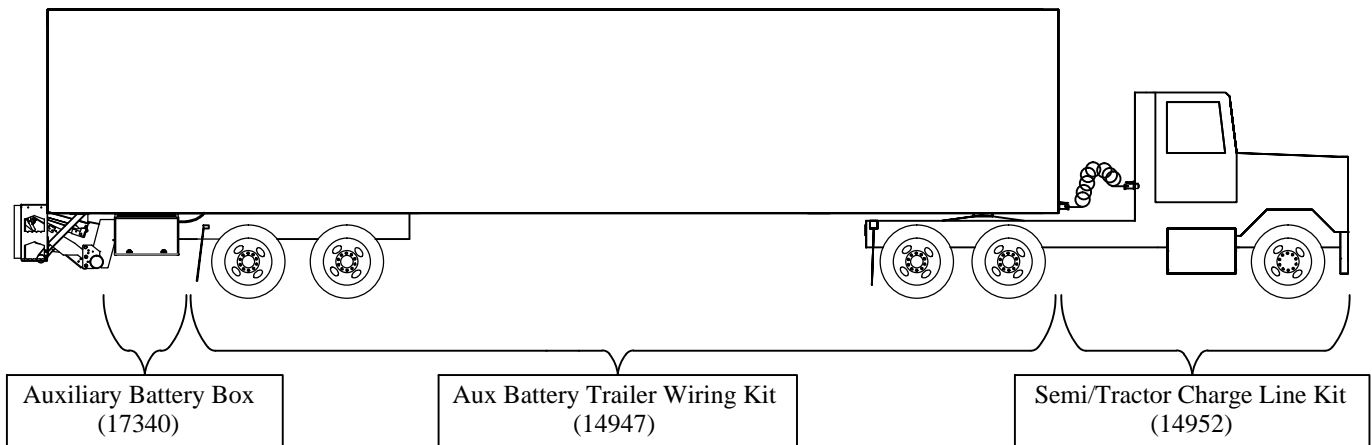
- Semi Truck/Trailer
- Straight Trucks

Liftgate Applications:

- Tuckunder Series
- Railgate Series



Long runs of liftgate power cable on semi-trailers and straight trucks cause a voltage drop from the vehicle's power source. The low voltage can result with damage to the liftgate's power unit. Auxiliary batteries correct the low voltage problem and increases the capacity of the current battery system.



AUXILIARY BATTERY BOX SELECTION GUIDE



Auxiliary Battery Box Kit Details

17340	
<p style="text-align: center;">AUXILIARY BATTERY BOX</p>	
Contents:	<ul style="list-style-type: none"> • Battery box • Battery hold downs • Fuses • Necessary hardware
Mounting Requirements	<ul style="list-style-type: none"> • Truck or Trailer must have steel crossmembers • Distance from the bottom of truck or trailer's cross member to the ground must be greater than 36" (laden).
Battery	<ul style="list-style-type: none"> • 12V system • Houses a maximum of two batteries • Accommodates group 31 batteries (not included)
Outside Box Dimensions	<ul style="list-style-type: none"> • Width 24" • Height 16" • Depth 16"
Weight	70lbs (excluding batteries)

AUXILIARY BATTERY BOX SELECTION GUIDE



Auxiliary Battery Trailer Wiring Kit Details

14947	
<p style="text-align: center;">SINGLE CONDUCTOR POWER CABLE SINGLE POLE POWER SOCKET</p>	
Connection	<ul style="list-style-type: none"> • Single pole
Contents	<ul style="list-style-type: none"> • 62' Single conductor power cable • Ground cable • Single pole power socket
Maximum Trailer Length	<ul style="list-style-type: none"> • 53'

Semi/ Tractor Charge Line Kit Details

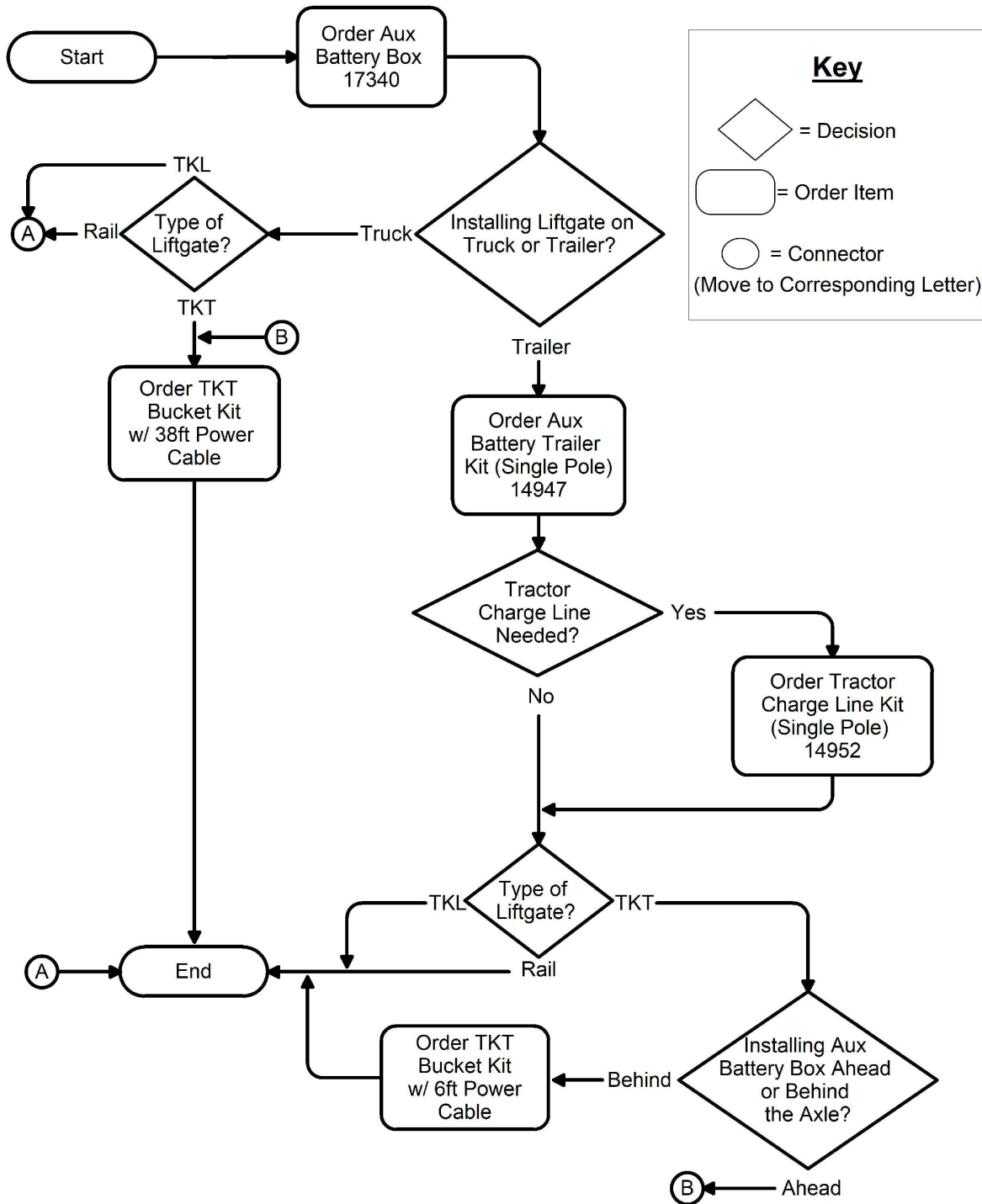
14952	
Connection	<ul style="list-style-type: none"> • Single pole
Contents	<ul style="list-style-type: none"> • 15' Single conductor power cable • 15' Single pole charge line • Single pole power socket and mounting bracket • Circuit breaker • Necessary mounting hardware

AUXILIARY BATTERY BOX SELECTION GUIDE



AUXILIARY BATTERY BOX FLOWCHART

THIS FLOWCHART WILL HELP DETERMINE WHICH AUXILIARY BATTERY KITS ARE NEEDED FOR AN APPLICATION. THE TABLE ON PAGE 5 ALSO SHOWS THIS INFORMATION.



AUXILIARY BATTERY BOX SELECTION GUIDE



The table below contains the same information as the flowchart on the previous page.

An "x" indicates an available kit for the corresponding application.

Quick Reference Guide for Available Auxiliary Battery Kits							
Kits	Applications						
	Straight Truck			Trailer			
	Railgate	TKL Tuckunder	TKT Tuckunder	Railgate	TKL Tuckunder	TKT Tuckunder	
						Ahead of Axle ¹	Behind Axle ¹
17340 Aux Battery Box	x	x	x	x	x	x	x
14947 Aux Battery Trailer Wiring Kit	-	-	-	x	x	x	x
14952 Semi/Tractor Charge line Kit	-	-	-	x ²	x ²	x ²	x ²
Bucket Kit with 6' Power Cable	-	-	-	-	-	-	x
Bucket Kit with 38' Power Cable	-	-	x	-	-	x	-

1. Position of auxiliary battery box in relation to the truck or trailer's rear axles.
 2. 14952 may not be needed if existing semi/tractor already has a single pole charge line.