

Repair Tuckunder TKT EA Platform Flipper Instructions 2500/3000 Models

These instructions will assist you in replacing an EA platform flipper on a Tuckunder TKT Series Tommy Gate lift.

Removing the Flipper Section

Skip to step 4 for platforms without a flipper torsion spring.

1. **RELIEVE** the spring tension by rotating the flipper to roughly the position shown (Figure 1).
2. **SUPPORT** the flipper to keep it from falling in the next steps.
3. **REMOVE** the 5/8" or 1/2" shoulder bolt from the torsion spring swivel on the drivers side (Figure 1).

CAUTION: The platform flipper will be heavy in the next step without the torsion spring wound.

4. **UNFOLD** the flipper (Figure 1).
5. **DRIVE** the roll pins out of the hinge pins (Figure 2, Detail A).
6. **REMOVE** the hinge pins from the platform by pulling them outward.
7. **SEPERATE** platform flipper from main platform section.

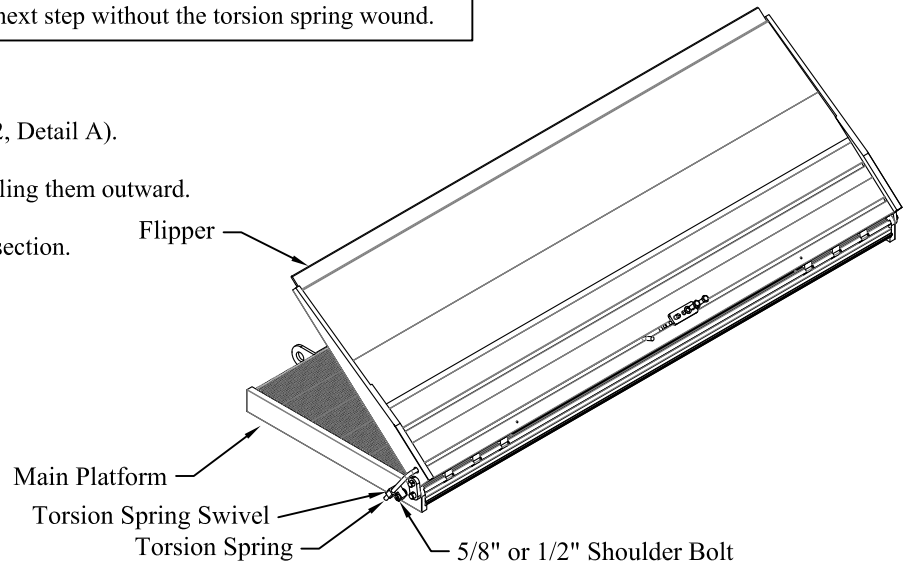


Figure 1: 60" EA Platform.

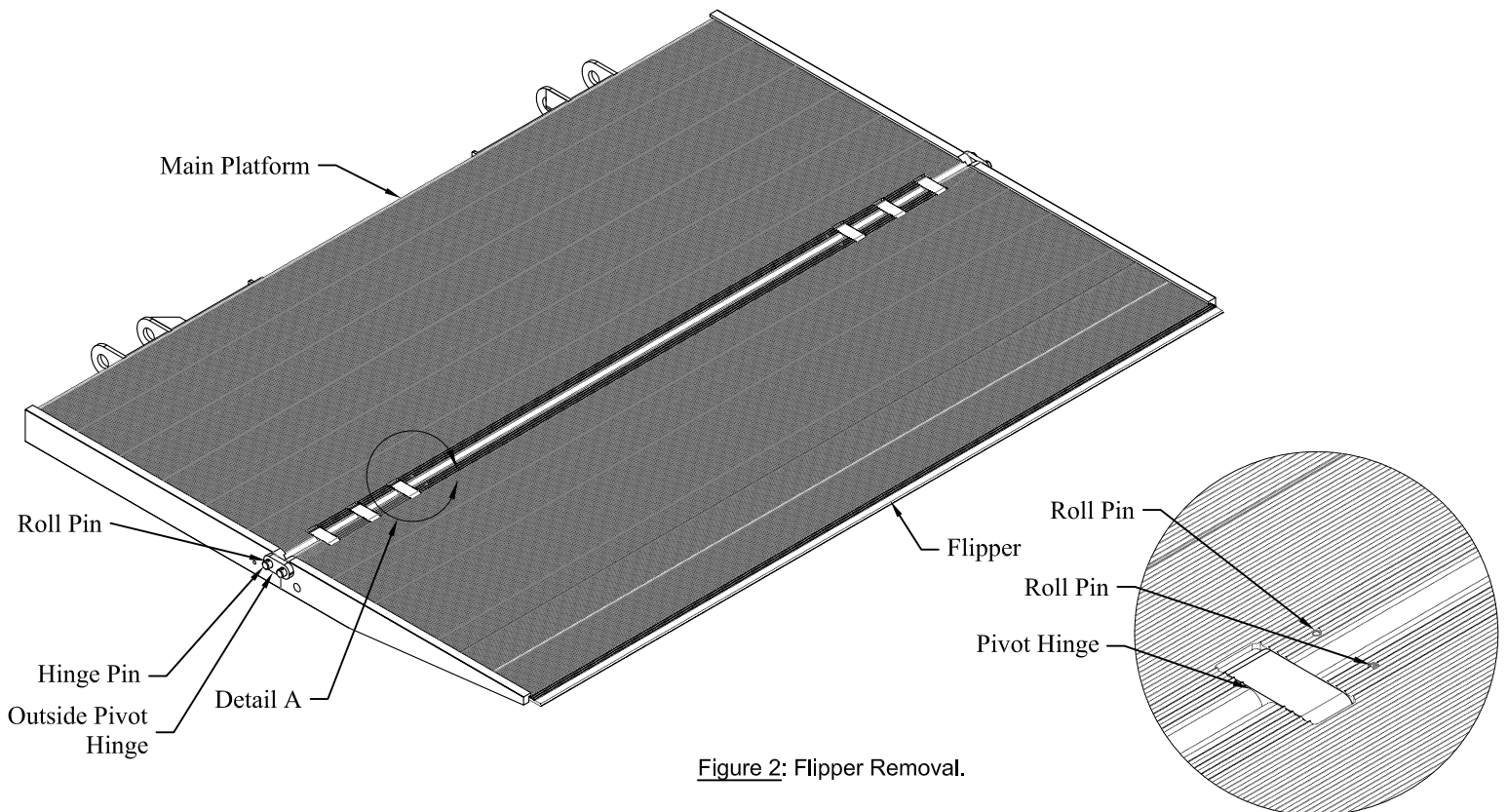


Figure 2: Flipper Removal.

Detail A

Repair Tuckunder TKT EA Platform Flipper Instructions 2500/3000 Models

Installing the Flipper Section

1. **ASSEMBLE** the flipper and main platform by lining up the pivot hinges (Figure 2).
2. **INSERT** the hinge pins into the main platform and flipper through the outside pivot hinge and all three (3) pivot hinges on each side (Figure 2).
Note: Insert chamfered side of hinge pin into platform.
3. **ALIGN** the holes in the hinge pins with the roll pin holes in the platform surface.
4. **DRIVE** two (2) roll pins into each hinge pin to lock them in place (Figure 2).

Installing the New Torsion Spring Hardware on the Platform

Skip this section for 50" deep EA platforms.

CAUTION: The platform flipper will be heavy in the next steps without the torsion spring wound.

NOTE: If a 1/2" shoulder bolt (3/8"-16 threads) was previously removed, the hole in the platform will need to be drilled and tapped to accept the new 5/8" shoulder bolt (1/2"-13 threads).

1. **ROTATE** the flipper to roughly the position shown and support flipper (Figure 3).
2. **INSERT** short spring end into driver side flipper with the short spring end pointing away from the platform (Figure 3).
3. **INSTALL** the torsion spring swivel on the torsion spring and **SLIDE** spring into the platform (Figure 3).
4. **APPLY** thread locker to 5/8" shoulder bolt threads.
5. **SECURE** the torsion spring swivel using the 5/8" shoulder bolt and 5/8" flat washer (Figure 3).
Make sure the hardware is in the order and orientation shown (Figure 3).
6. **PLACE** the slot of the torsion spring capture plate over the short end of the torsion spring (Figure 3).
7. **ALIGN** the torsion spring capture plate with the torsion spring capture key (Figure 3).
8. **ATTACH** torsion spring capture plate to torsion spring capture key with two (2) 1/2" bolts and lock washers (Figure 3).
9. **FOLD** and **STORE** platform.

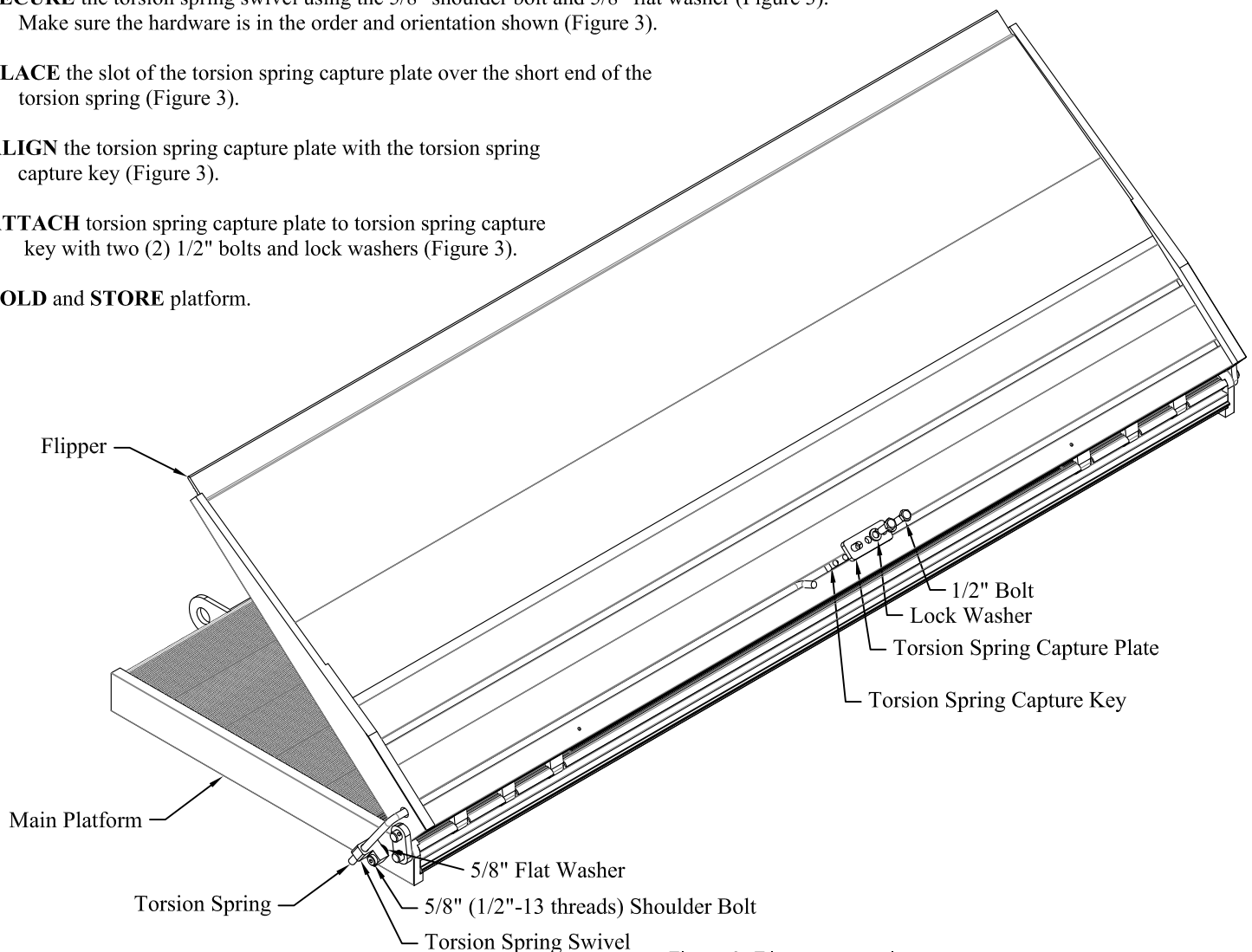


Figure 3: Flipper Installation.