

**Installing the Lid Guards**

1. **Position** the platform as required to install lid guards.  
Use supports if working underneath the platform.
2. **Disconnect** the power cable from the positive side of the battery, or manually **Trip** the circuit breaker.
3. **Mark** the location of the lid guards for your platform (Figures 2-7).  
Locate four on the main platform or two on each of the bi-fold platforms, and 2 on folding extension if equipped.  
Avoid the hinge tube.

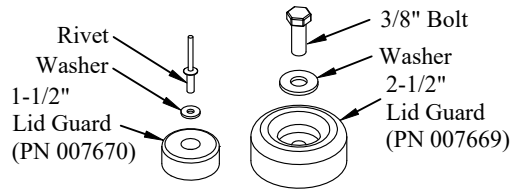
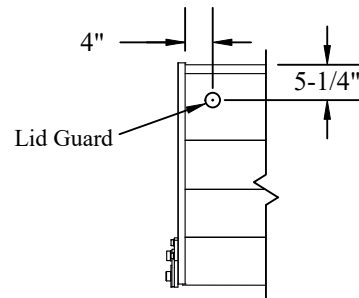


Figure 1: Lid guard assembly.

Note: If your platform has a dimension shown, that dimension must be maintained within 1/16" to miss the internal platform structure.

4. **Drill** a hole through one wall only at each marked location using:  
5/16" drill bit for 2-1/2" lid guards.  
3/16" drill bit for 1-1/2" lid guards.
5. **Tap** the 5/16" drilled holes with a 3/8"-16 UNC-2B tap for 2-1/2" lid guards.
6. **Attach** the lid guards to the platform (Figure 1).
7. **Close and Latch** the platform.
8. **Reconnect** power to the liftgate.

Railgate Series  
Aluminum Folding Extension



Note: Left side shown, right side is similar.

Figure 2: Rail Series folding extension lid guard location.

Railgate Series: Bi-Fold Platforms

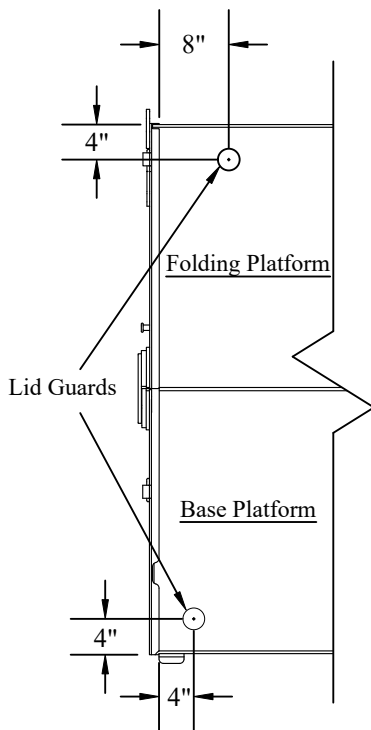
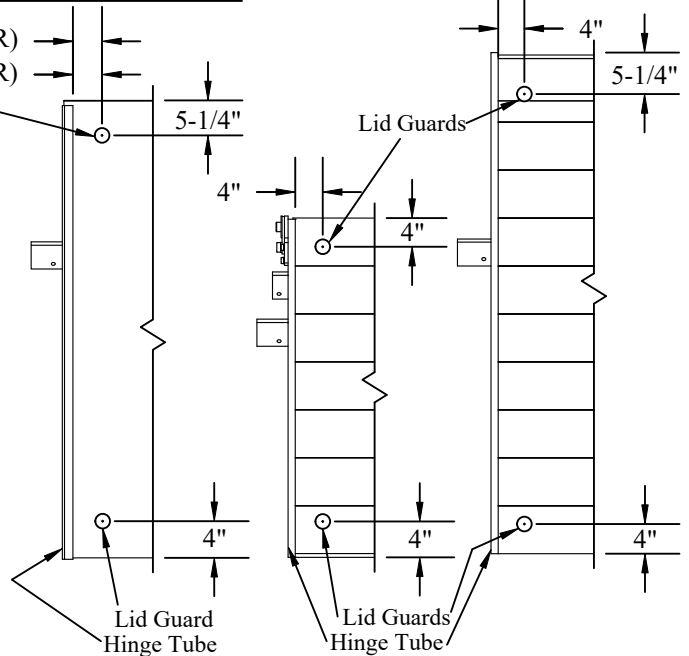


Figure 4: Bi-Fold platform lid guard location.

Railgate Series  
Steel Platform (Not Bi-Fold)

- 4" (2X) (Non High Cycle GBR)
- 8" (2X) (High Cycle GBR)

Railgate Series  
Aluminum Platforms

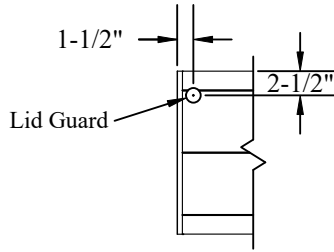


Note: Left side shown, right side is similar.

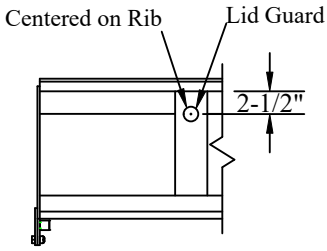
Figure 3: Railgate main platform lid guard location.

# Lid Guard Installation Instructions

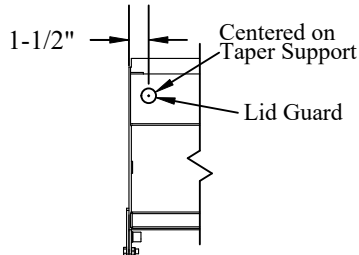
## **G2** & Original Series Aluminum Folding Extension



## Original Series Steel Folding Extension



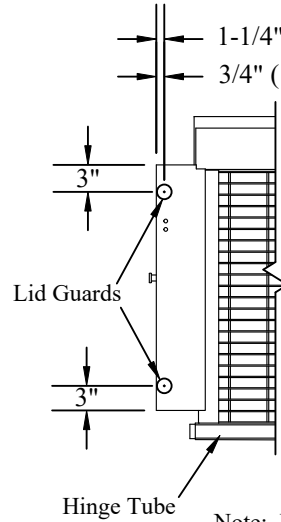
## **G2** Series Steel Folding Extension



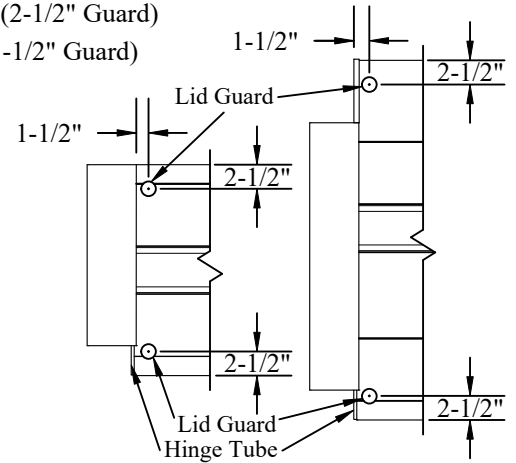
Note: Left side shown, right side is similar.

Figure 5: **G2** and Original Series folding extension lid guard location.

## **G2** & Original Series 50" Travel Tommy Traction & Bar Grate Platforms



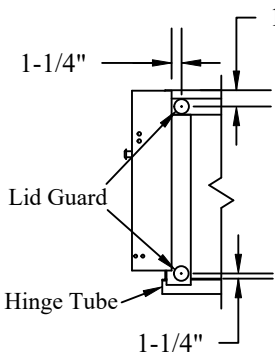
## **G2** & Original Series Aluminum Platforms



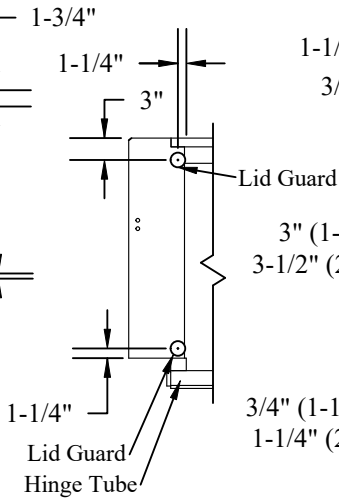
Note: Left side shown, right side is similar.

Figure 6: Bar Grate and Aluminum main platform lid guard location.

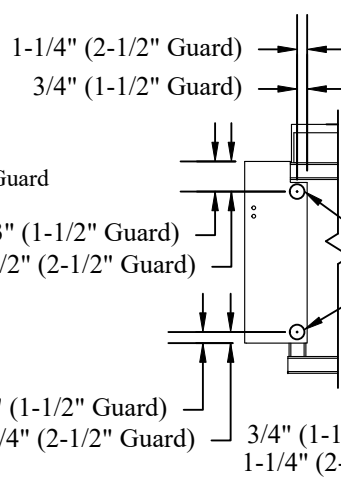
## Original Series Steel Platform



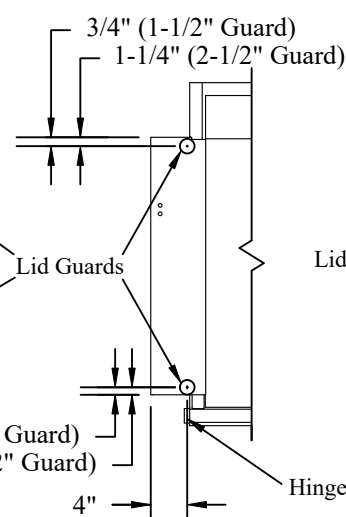
## **G2** Series Steel Platform



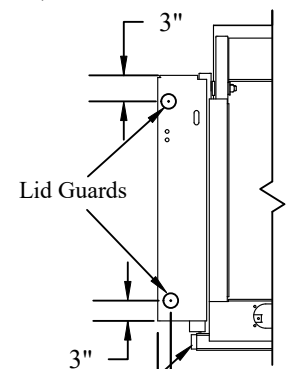
## **G2** Series 42" Travel One-Piece Steel Platform



## **G2** & Original Series 50" Travel One-Piece Steel Platforms



## Lift-N-Dump Platform



Note: Left side shown, right side is similar.

Figure 7: **G2** and Original Series main platform lid guard location.