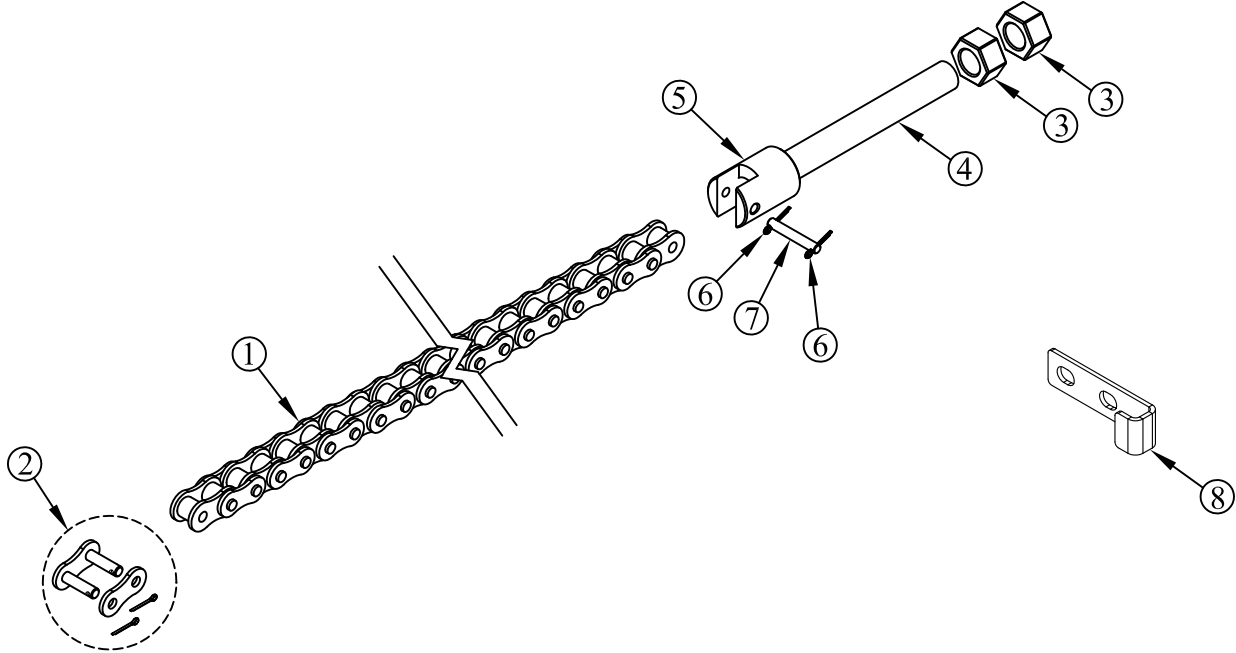



ITEM NO.	QTY.	PART NO.	DESCRIPTION
1	1	007658	219 PITCH ROLLER CHAIN(BH)DRIVER'S SIDE
2	1	007661	50 SERIES CONNECTING LINK
3	2	000552	5/8-18 SAE HEX FIN NUT
4	1	007667	5/8"x5-3/4" CHAIN ADJUSTMENT BOLT
5	1	007666	1.12"DIA.x1.5" RAIL CHAIN TENSIONER
6	2	009967	1/16"x1/2" COTTER PIN
7	1	009867	0.200x1.344" HEAT CHAIN CLEVIS PIN
8	1	012614	PLATED CHAIN SHIELD
9	1	095041	ROLLER CHAIN REPLACEMENT GUIDE



REV.	DATE	CHANGE RECORD	BY	APPVD	ECN	THIRD ANGLE PROJECTION	FILENAME:	SYMBOLY PER ANSI Y14.5	NOTES:	WOODBINE MFG. CO. BUS BROWN DRIVE WOODBINE, IOWA 51579		
C	2/19/14	ADDED (1) 12614; REMOVED (1) 7317	JCB		1056	MACHINE SAW, DRILL		DRAWN BY: DJR		712-647-2050		
B	3/30/09	REPLACED PN 7947 WITH INDIVIDUAL PARTS	JCB	JCB	121	SHEAR, PUNCH FORM		DRAWN/DATE: 10/3/03		 <p>THE INFORMATION HERE IS CONFIDENTIAL AND MUST NOT BE USED IN ANYWAY DETRIMENTAL TO THE INTEREST OF WOODBINE MFG.</p>		
A	12/22/08	ADDED PN 95041	JCB	JCB	91	TORCH, WELDING ROUGH CAST		APPVD/DATE	TITLE: 219 PITCH REPLACEMENT ROLLER CHAIN BED-HEIGHT DRIVER'S SIDE			
						DRAFT 2°	ANGULAR ±1°	SALES CATEGORY	PRODUCT LINE	SCALE 1:4	FIN. WT.	PART NO. 8022