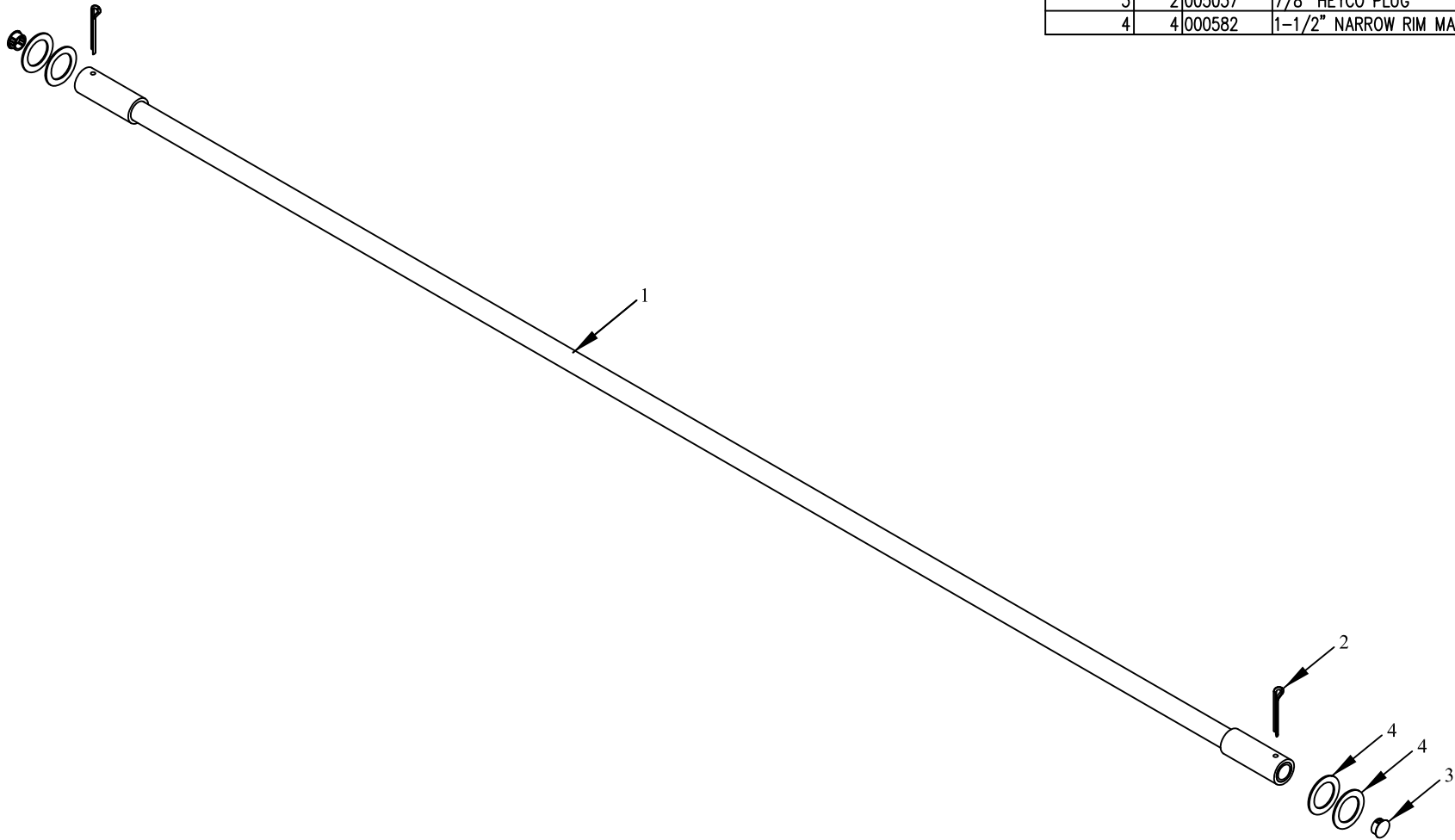


ITEM NO.	QTY.	PART NO.	DESCRIPTION
1	1	001920	.88" I.D. x 1.12" O.D. x 88.5" TUBE ASY.(85)
2	2	004720	1/4" x 2" COTTER PIN
3	2	005037	7/8" HEYCO PLUG
4	4	000582	1-1/2" NARROW RIM MACHINE BUSHING



REV.	DATE	CHANGE RECORD	BY	APPVD	ECN	DRAFT	ANGULAR	SALES CATEGORY	PRODUCT LINE	SCALE	FIN. WT.	PART NO.
						2'	±1'	45	3941	N		6433

THIRD ANGLE PROJECTION	FILENAME:	WOODBINE MFG. CO.
	SYMBOLY PER ANSI Y14.5	BUS BROWN DRIVE
DECIMAL	2PLC	3PLC
MACHINE SAW, DRILL	.030	.015
SHEAR, PUNCH FORM	.060	.030
TORCH, WELDING ROUGH CAST	.090	.060
	DRAWN BY. DJR	712-647-2050
	DRAWN/DATE 7/28/03	
	APPVD/DATE	THE INFORMATION HERE IS CONFIDENTIAL AND MUST NOT BE USED IN ANYWAY DETRIMENTAL TO THE INTEREST OF WOODBINE MFG.
	TITLE	88" REPLACEMENT HINGE TUBE(85)