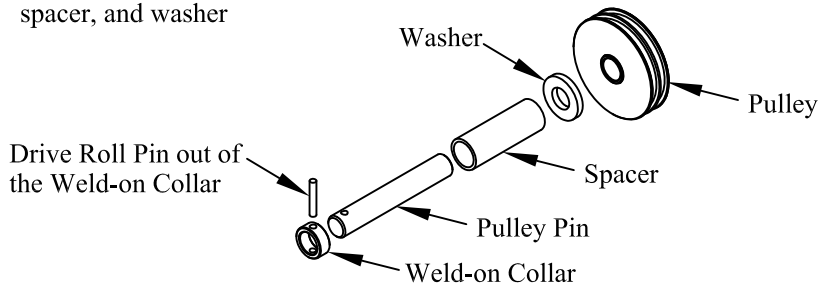


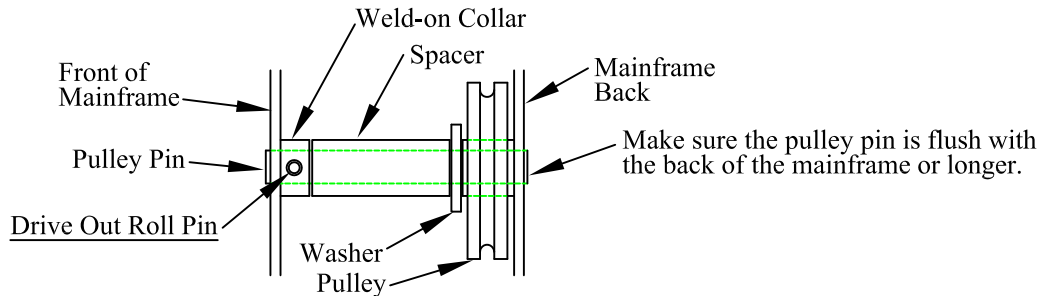
REPLACING MAINFRAME PULLEY PINS - TOMMY GATE CABLE LIFTS

These instructions will show you how to replace a pulley pin that is held in place with a roll pin.

- Step 1. Lower the liftgate to the ground, making sure it is on a level surface.
- Step 2. To avoid risk of a 12 volt electrical short, disconnect the #4 power cable from the positive side of the battery or manually trip the circuit breaker.
- Step 3. Remove the box cover and locate pulley pin that needs to be replaced. Also at this time check both cables and all other pins and pulleys for wear or damage. Check the cylinder, hose, and pump and motor unit for leaks. Replace or repair any of these other items if necessary.
- Step 4. Drive roll pin out of the weld-on collar. Remove old pulley pin, pulley, spacer, and washer



- Step 5. Install the new pulley pin, pulley, spacer, washer, and roll pin in the liftgate as shown below. The pulley must turn freely, if it does not, adjust the length of the spacer. Make sure the cables are correctly routed around the pulleys before continuing with the installation.

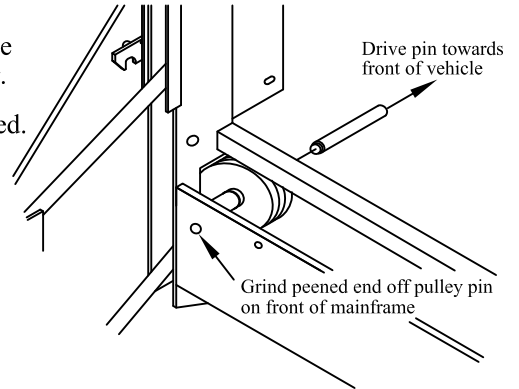


- Step 6. Reconnect the liftgate's main power cable to the positive side of the battery. Check the liftgate for even closing and adjust the lift cables if necessary, before replacing box cover.

RETROFITTING MAINFRAME PULLEY PINS - TOMMY GATE CABLE LIFTS

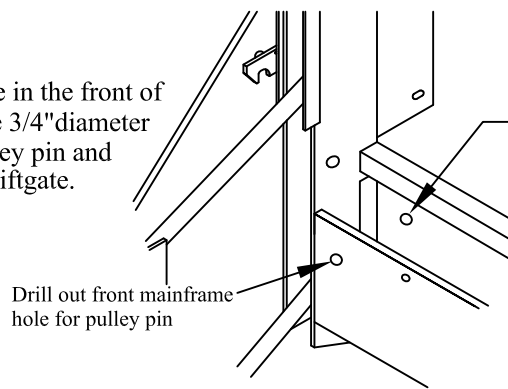
These instructions will show you how to replace a pulley pin that is riveted (or peened) in place.

- Step 1. Lower the liftgate to the ground, making sure it is on a level surface.
- Step 2. To avoid risk of a 12 volt electrical short, disconnect the #4 power cable from the positive side of the battery or manually trip the circuit breaker.
- Step 3. Remove the box cover and locate the pulley pin that needs to be replaced. Also at this time check both cables and all other pins and pulleys for wear or damage. Check the cylinder, hose, and pump and motor unit for leaks. Replace or repair any of these other items if necessary.
- Step 4. BEFORE WELDING OR GRINDING, YOU MUST COVER AND PROTECT THE LIFT CABLES, PUMP AND MOTOR UNIT, AND CONTROL WIRING.



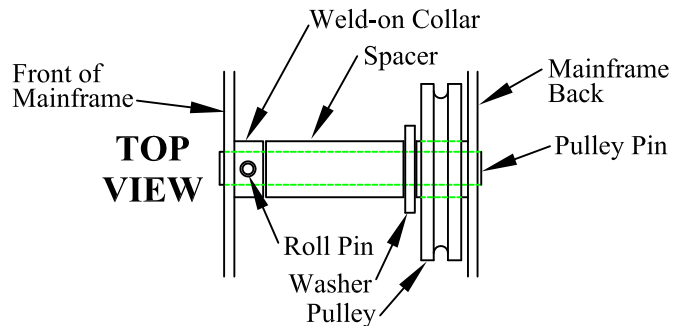
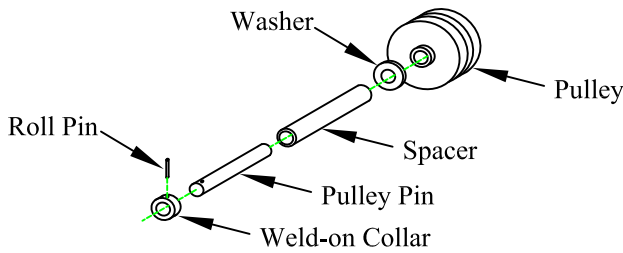
- Step 5. Grind peened end off pulley pin on the front of the liftgate mainframe and drive pin toward the front of the vehicle. Remove old pulley pin, pulley, spacer, and washer. When grinding, wear some type of eye protection.

- Step 6. Drill out the pulley pin hole in the front of the mainframe to match the 3/4" diameter or 7/8" diameter of the pulley pin and the hole in the back of the liftgate.

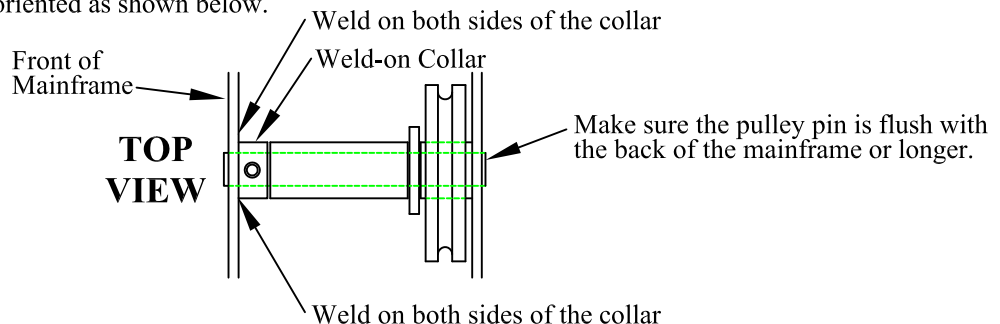


NOTE: On liftgate models 1046 and 1346, with serial numbers earlier than F-173972 or M-30152, the front and back mainframe holes must be drilled to match the 7/8" diameter replacement pulley pin.

- Step 7. Install the new pulley pin, pulley, spacer, washer, weld on collar, and roll pin in the liftgate as shown below. The pulley must turn freely, if it does not adjust the length of the spacer. Make sure the cables are correctly routed around the pulleys before continuing with the installation.



- Step 8. Weld both sides of the weld-on collar to the front of the mainframe as shown below. Make sure the roll pin in the collar is vertically oriented as shown below.



- Step 9. Reconnect the liftgate's main power cable to the positive side of the battery or manually engage the circuit breaker. Check the liftgate for even closing and adjust the lift cables if necessary, before replacing box cover.