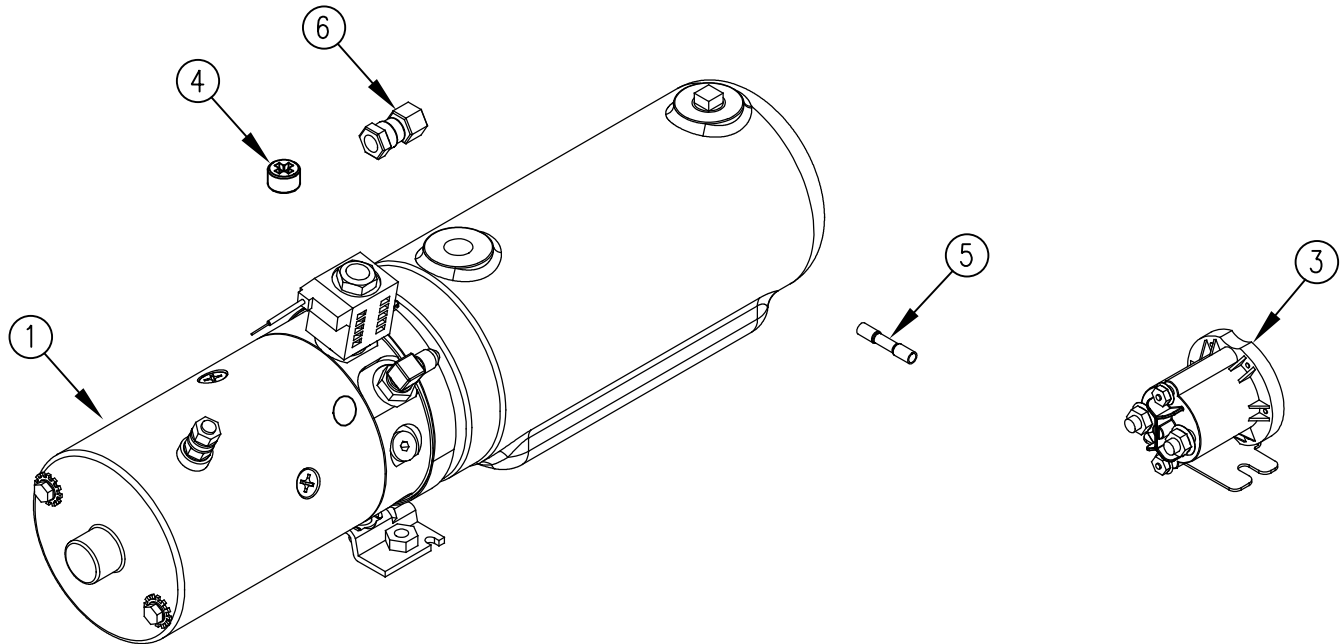


ITEM NO.	QTY.	PART NO.	DESCRIPTION
1	1	004489	RAIL (N) PUMP & MOTOR 3QT
2	0.625 GAL	009034	HYDRAULIC OIL
3	1	013213	MONARCH 4-POST SOLENOID (TX) FLAT BASE
4	1	004403*	VENT PLUG
5	1	009089	16-14 HEAT SHRINK BUTT CONNECTOR
6	1	012967	#4 FJIC TO #4 FEMALE NPT ADAPTOR (6506-4-4)
7	1	095048	REPLACEMENT POWER UNIT INSTALLATION INSTR.

* ACCOUNTING DO NOT USE FOR B.O.M.



						THIRD ANGLE PROJECTION	DRAWN BY AAS	NOTES:	WOODBINE MFG. CO. BUS BROWN DRIVE WOODBINE, IOWA 51579
						UNLESS OTHERWISE SPECIFIED	DRAWN/DATE 2/21/17		
C	1/13/22	TITLE AND TITLEBLOCK UPDATE	JRR		2701	DIMENSIONS ARE IN INCHES	APPVD/DATE —		
B	2/21/17	RELEASED TO PRODUCTION	AAS		1799	TOLERANCES: FRACTIONAL ±1/16 ANGULAR MACH ±1° BEND ±1°	DO NOT SCALE DRAWING	TITLE RAIL REPAIR PUMP & MOTOR (2600 PSI) 3 QT. 79 THRU 95 (TX-20) 4 POST	The Original TOMMY GATE hydraulic lift
A	2/21/17	DRAWN IN AUTOCAD	AAS			TWO PLACE DECIMAL ±0.030 THREE PLACE DECIMAL ±0.010			
REV.	DATE	CHANGE RECORD	BY	APPVD	ECN	THE INFORMATION HERE IS CONFIDENTIAL AND MUST NOT BE USED IN ANY WAY DETRIMENTAL TO THE INTEREST OF WOODBINE MFG.	SCALE 1:4	WEIGHT —	PART NO. 15001