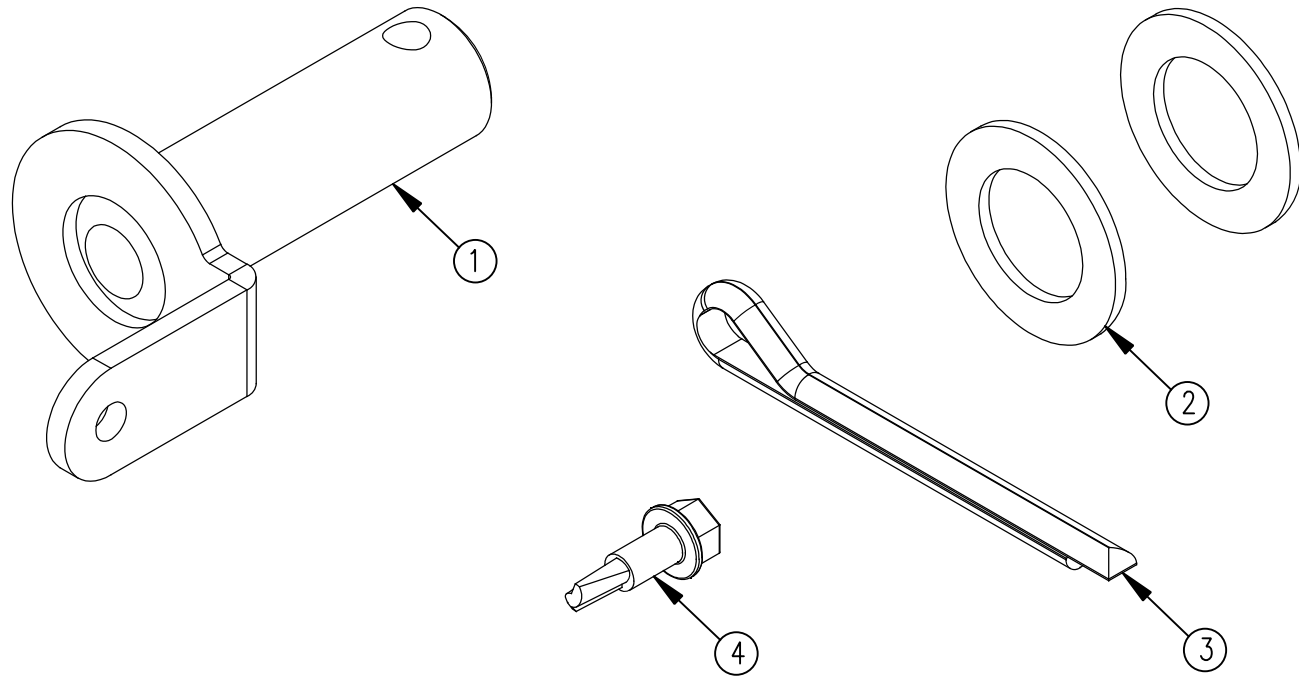



ITEM NO.	QTY.	PART NO.	DESCRIPTION
1	1	014030	.75" BF PIVOT PIN AND KEEPER
2	2	000622	3/4"IDx1-1/4"OD FLAT WASHER (650) *ZP*
3	1	004720	1/4"x2" COTTER PIN
4	1	013180	#12x3/4" HEX HEAD SELF-DRILLING SCREW
5	1	095198	BF PIVOT PIN REPLACEMENT INSTRUCTIONS



REV.	DATE	CHANGE RECORD	BY	APPVD	ECN	DRAFT	ANGULAR	SCALE	FIN. WT.	PART NO.														
A	3/10/16	RELEASED TO PRODUCTION	AAS		1593	2"	±1°	NTS		14672														
						THIRD ANGLE PROJECTION																		
						<table border="1"> <tr> <td>DECIMAL</td> <td>2PLC</td> <td>3PLC</td> </tr> <tr> <td>MACHINE SAW, DRILL</td> <td>.030</td> <td>.015</td> </tr> <tr> <td>SHEAR, PUNCH FORM</td> <td>.060</td> <td>.030</td> </tr> <tr> <td>TORCH, WELDING ROUGH CAST</td> <td>.090</td> <td>.060</td> </tr> </table>	DECIMAL	2PLC	3PLC	MACHINE SAW, DRILL	.030	.015	SHEAR, PUNCH FORM	.060	.030	TORCH, WELDING ROUGH CAST	.090	.060	SYMBOLY PER ANSI Y14.5		NOTES:		WOODBINE MFG. CO. BUS BROWN DRIVE WOODBINE, IOWA 51579	
DECIMAL	2PLC	3PLC																						
MACHINE SAW, DRILL	.030	.015																						
SHEAR, PUNCH FORM	.060	.030																						
TORCH, WELDING ROUGH CAST	.090	.060																						
						DRAWN BY. AAS																		
						DRAWN/DATE 3/10/16				<small>THE INFORMATION HERE IS CONFIDENTIAL AND MUST NOT BE USED IN ANYWAY DETRIMENTAL TO THE INTEREST OF WOODBINE MFG.</small>														
						TITLE				REPLACEMENT PIVOT PIN/KEEPER-BF														