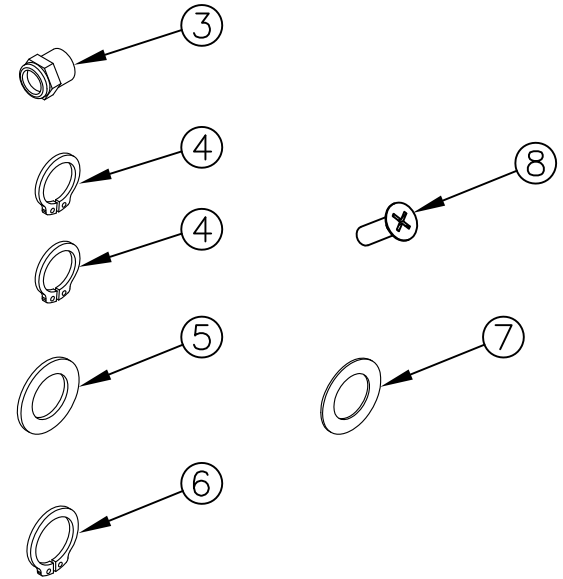
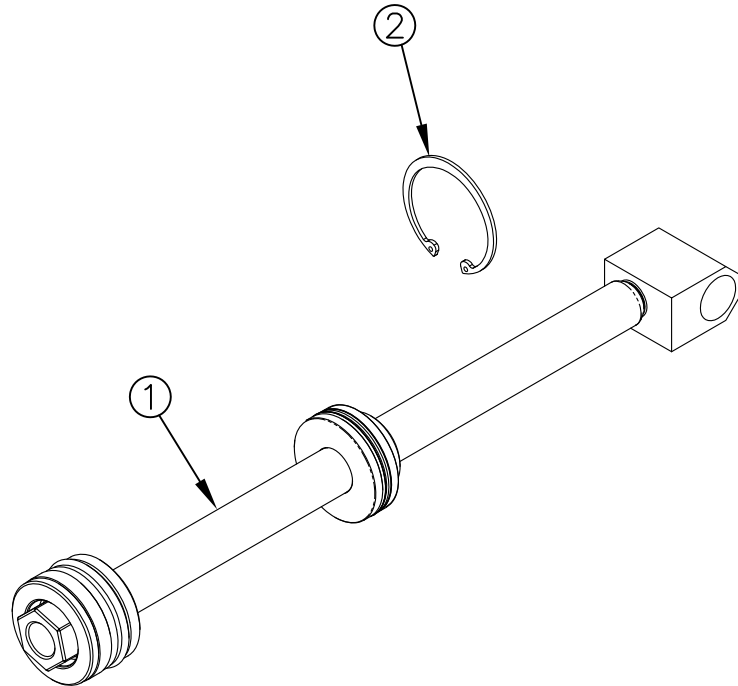


ITEM NO.	QTY.	PART NO.	DESCRIPTION
1	1	007429	CYLINDER SHAFT COMPLETE (G2)
2	1	002314	1-7/8" INTERNAL SNAP RING
3	1	000600	VENT PLUG - CYLINDER (RAIL)
4	2	002025	3/4" EXTERNAL SNAP RING (G2) PLATED
5	1	000622	3/4"IDx1-1/4"O.D. FLAT WASHER
6	1	002026	7/8" EXTERNAL SNAP RING
7	1	010976	3/4"IDx1-1/4"O.D. THIN FLAT WASHER
8	1	000756	1/4-20x3/4" PHI FH TYPE F SS
9	1	095007	G2 CYLINDER REPAIR/REPLACE INSTRUCTIONS



REV.	DATE	CHANGE RECORD	BY	APPVD	ECN	DRAFT 2'	ANGULAR ±1°	SALES CATEGORY	PRODUCT LINE	SCALE 1:3	FIN. WT. 2.40	PART NO. 1211	
E	6/11/21	ADDED (1) 756	AAS		2514	THIRD ANGLE PROJECTION 		FILENAME:	WOODBINE MFG. CO. BUS BROWN DRIVE WOODBINE, IOWA 51579 THE INFORMATION HERE IS CONFIDENTIAL AND MUST NOT BE USED IN ANYWAY DETRIMENTAL TO THE INTEREST OF WOODBINE MFG.				
D	4/11/16	REMOVED 9472	AAS		1614		DECIMAL 2PLC 3PLC MACHINE SAW, DRILL .030 .015	SYMBOLY PER ANSI Y14.5					NOTES:
C	12/21/10	ADDED (1) 2026 AND (1) 10976	JCB		381		SHEAR, PUNCH FORM .060 .030	DRAWN BY. JCB					
B	10/7/09	UPDATED DESCRIPTION	JCB	JCB	126		TORCH, WELDING ROUGH CAST .090 .060	DRAWN/DATE 11/17/08					
A	11/17/08	DRAWN IN AUTOCAD	JCB	KGJ				APPVD/DATE					