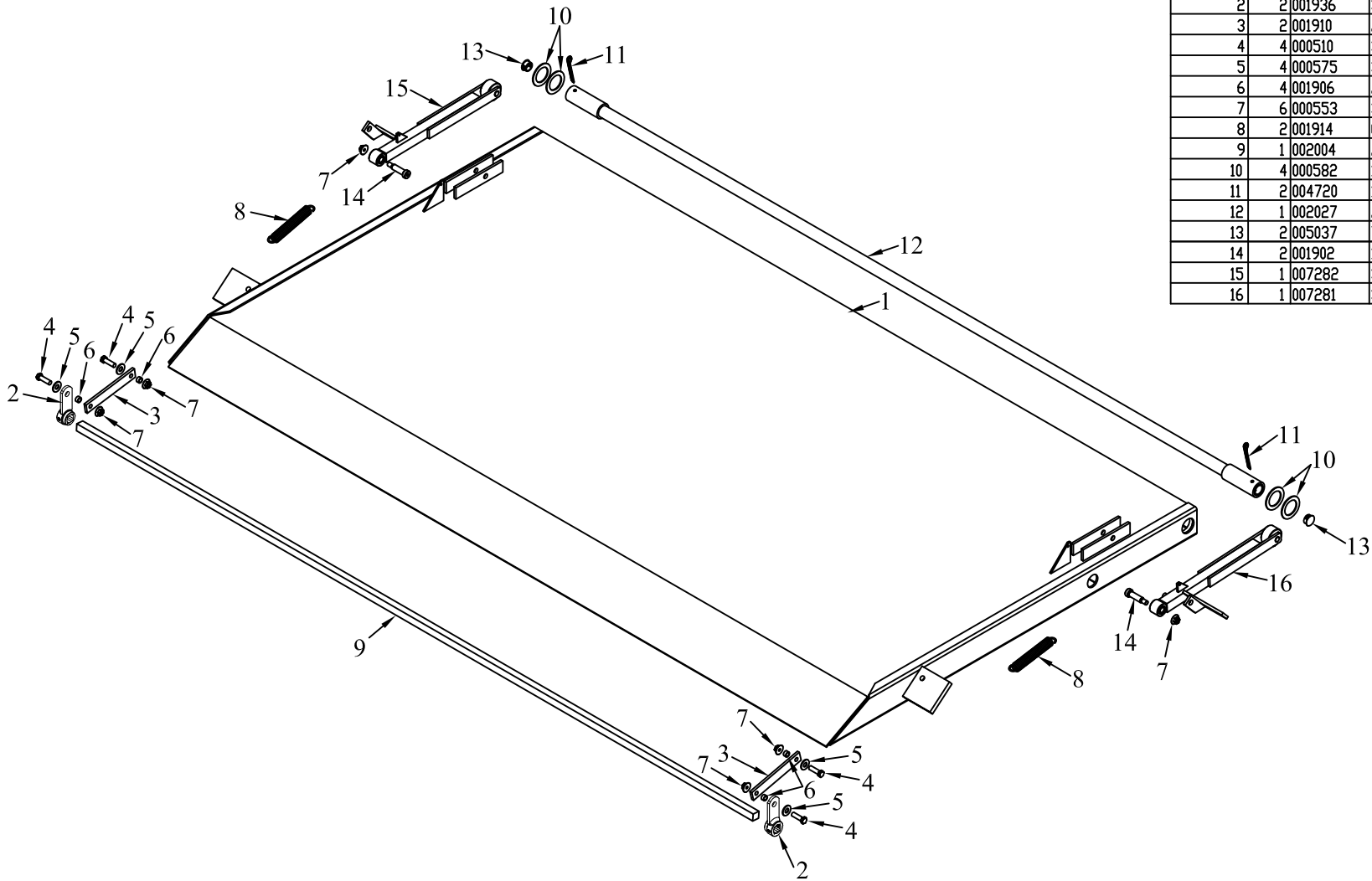


ITEM NO.	QTY.	PART NO.	DESCRIPTION
1	1	008999 *	95 42+6 STEEL SC PLATFORM COMPLETE
2	2	001936	SQ. TORSION SPRNG ARM (SC)
3	2	001910	25"X1"X6.25" LINK
4	4	000510	3/8-16X1-1/4" HHCS GR5
5	4	000575	3/8 USS FLAT WASHER
6	4	001906	.377" I.D.X.503" O.D.X.281" BRONZE BUSHING
7	6	000553	3/8" CROWN LOCK NUT
8	2	001914	0.115"WIREX0.75"X5.5" EX. SPRING
9	1	002004	.75"SQ.X96.625" PIVOT BAR
10	4	000582	1-1/2" NARROW RIM MACHINE BUSHING
11	2	004720	1/4"x2" COTTER PIN
12	1	002027	.88" I.D.X.1.12" O.D.X.98.5" TUBE ASY(95)
13	2	005037	7/8" HEYCO PLUG
14	2	001902	1/2" DIA.X1-1/2" CHROME PLATED SHOULDER BOLT
15	1	007282	SELF CLOSE ARM (LEFT) (N)
16	1	007281	SELF CLOSE ARM (RIGHT) (N)



NOTE: "\*" INDICATES INDIVIDUAL PARTS ARE LISTED IN ACCOUNTING.

				THIRD ANGLE PROJECTION		FILENAME:		WOODBINE MFG. CO.															
						SYMBOLY PER ANSI Y14.5		BUS BROWN DRIVE															
				<table border="1"> <tr> <th>DECIMAL</th> <th>2PLC</th> <th>3PLC</th> </tr> <tr> <td>MACHINE SAW, DRILL</td> <td>.030</td> <td>.015</td> </tr> <tr> <td>SHEAR, PUNCH FORM</td> <td>.060</td> <td>.030</td> </tr> <tr> <td>TORCH, WELDING ROUGH CAST</td> <td>.090</td> <td>.060</td> </tr> </table>		DECIMAL	2PLC	3PLC	MACHINE SAW, DRILL	.030	.015	SHEAR, PUNCH FORM	.060	.030	TORCH, WELDING ROUGH CAST	.090	.060	DRAWN BY: DJR		NOTES:		WOODBINE, IOWA 51579	
DECIMAL	2PLC	3PLC																					
MACHINE SAW, DRILL	.030	.015																					
SHEAR, PUNCH FORM	.060	.030																					
TORCH, WELDING ROUGH CAST	.090	.060																					
				DRAWN/DATE: 10/31/03		712-647-2050																	
B	5/1/12	REMOVED (4) 007711	GDB	649	APPVD/DATE:		THE INFORMATION HERE IS CONFIDENTIAL AND MUST NOT BE USED IN ANYWAY DETRIMENTAL TO THE INTEREST OF WOODBINE MFG.		TITLE														
A	1/24/08	DRAWN IN AUTOCAD	JCB	KGJ	SALES CATEGORY		(95) SC 42+6" REPLACEMENT STEEL PLATFORM		PART NO.														
REV.	DATE	CHANGE RECORD	BY	APPVD	ECN	DRAFT 2"	ANGULAR ±1"	PRODUCT LINE	SCALE 1:15	FIN. WT.	PART NO. 1701												