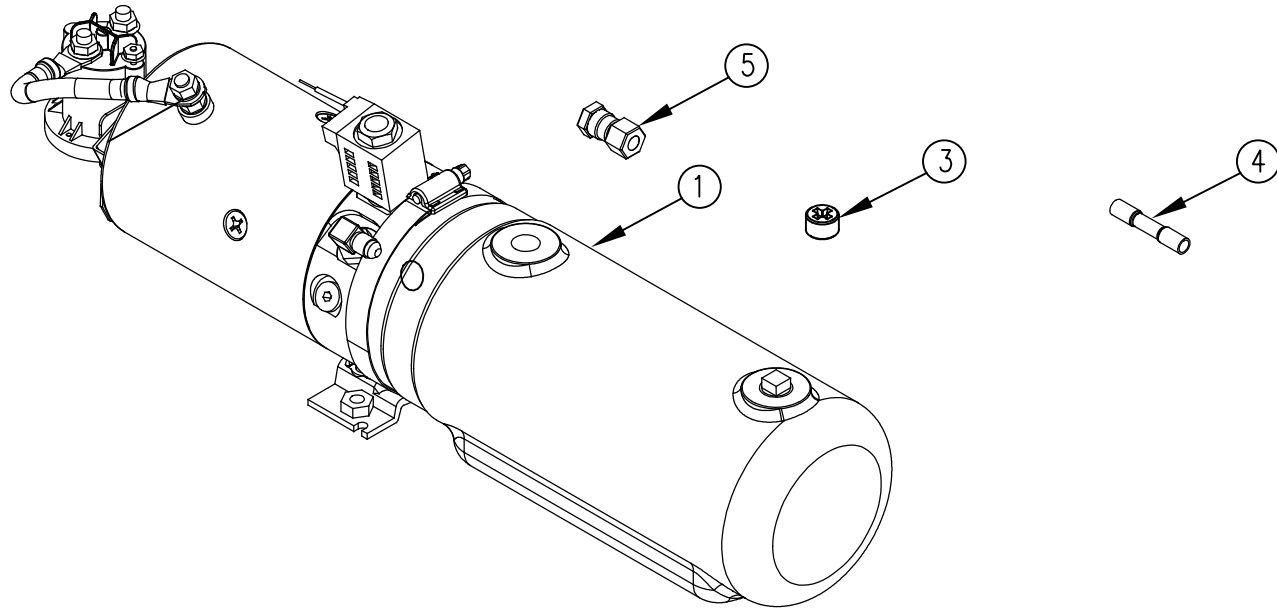


| ITEM NO. | QTY.         | PART NO. | DESCRIPTION                                 |
|----------|--------------|----------|---|
| 1        | 1            | 004338   | MONARCH UNIT 319-0315 3QT (3000) 1600       |
| 2        | 0.625<br>GAL | 009034   | HYDRAULIC OIL                               |
| 3        | 1            | 004403*  | VENT PLUG                                   |
| 4        | 1            | 009089   | 16-14 HEAT SHRINK BUTT CONNECTOR            |
| 5        | 1            | 012967   | #4 FJIC TO #4 FEMALE NPT ADAPTOR (6506-4-4) |
| 6        | 1            | 095048   | REPLACEMENT POWER UNIT INSTALLATION INSTR.  |

\* ACCOUNTING DO NOT USE FOR B.O.M.



|      |          |                              |     |       |      |   |                         |   |  |
|------|----------|------------------------------|-----|-------|------|---|-------------------------|---|--|
| E    | 1/12/22  | TITLE AND TITLEBLOCK UPDATE  | JRR |       | 2701 | THIRD ANGLE PROJECTION  | DRAWN BY<br>DJR         | NOTES:  | WOODBINE MFG. CO.<br>BUS BROWN DRIVE<br>WOODBINE, IOWA 51579 |
| D    | 11/14/13 | ADDED (1) 012967             | GDB |       | 1004 | UNLESS OTHERWISE SPECIFIED  | DRAWN/DATE<br>7/1/04    |   |  |
| C    | 7/23/10  | ADDED (1) 9089 AND (1) 95048 | JCB |       | 310  | DIMENSIONS ARE IN INCHES  | APPVD/DATE<br>—         |   |  |
| B    | 9/6/06   | UPDATED BOM                  | JCB | KGJ   |      | TOLERANCES:   | DO NOT SCALE<br>DRAWING | TITLE<br>CABLE REPAIR PUMP & MOTOR<br>(2700 PSI) 3 QT. 1050 |  |
| A    | 7/1/04   | DRAWN IN AUTOCAD             | DJR |       |      | FRACTIONAL ±1/16<br>ANGULAR MACH ±1°<br>BEND ±1°<br>TWO PLACE DECIMAL ±0.030<br>THREE PLACE DECIMAL ±0.010        | SCALE<br>1: 4           | WEIGHT<br>—   | PART NO.<br>4295   |
| REV. | DATE     | CHANGE RECORD                | BY  | APPVD | ECN  | THE INFORMATION HERE IS CONFIDENTIAL AND MUST NOT BE USED IN ANY WAY DETRIMENTAL TO THE INTEREST OF WOODBINE MFG. |                         |   |  |