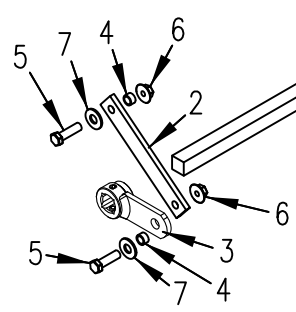
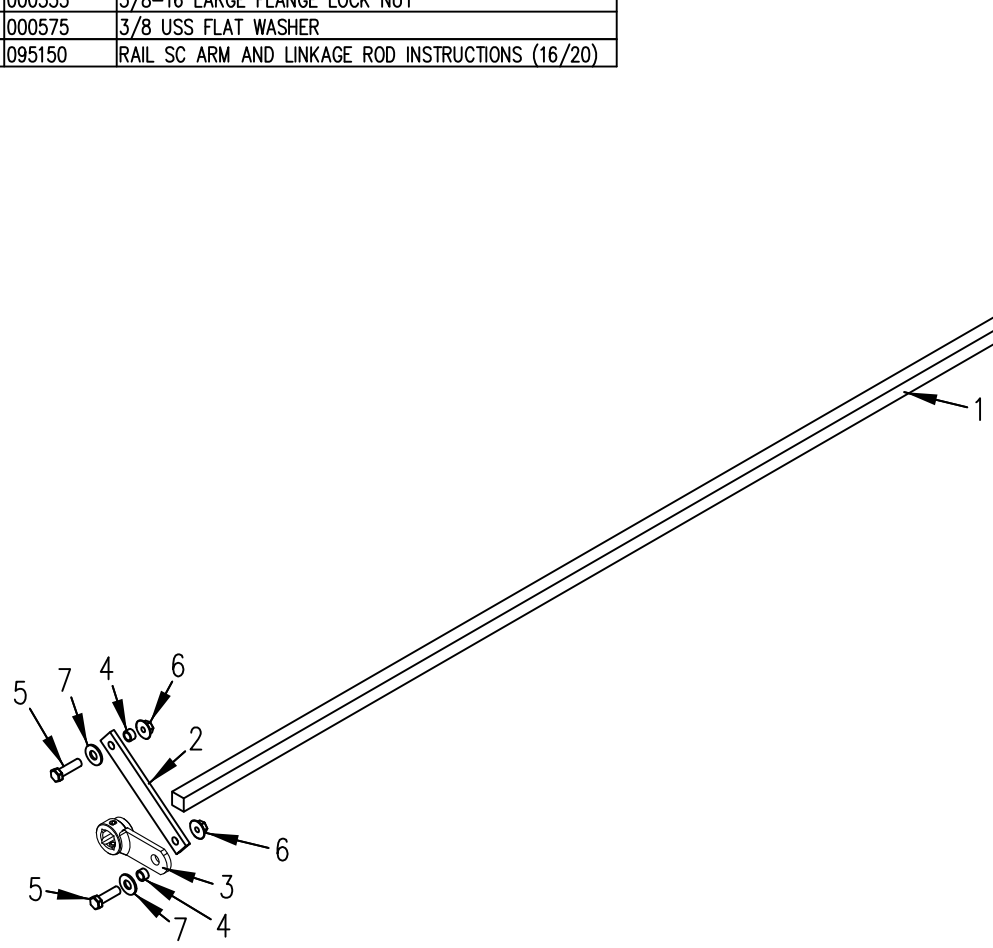
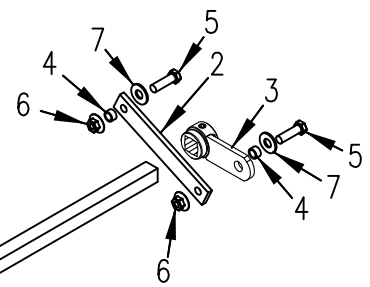
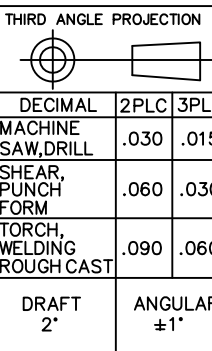


ITEM NO.	QTY.	PART NO.	DESCRIPTION
1	1	001974	.75"SQ.X86.625" PIVOT BAR
2	2	007969	PLATED .25"X1"X6.72" SC LINK
3	2	007968	PLATED SQ. TORSION SPRING ARM (SC)
4	4	001906	.377" I.D.X.503"O.D.X.281" BRONZE BUSHING
5	4	000510	3/8-16x1-1/4" HHCS GR5
6	4	000553	3/8-16 LARGE FLANGE LOCK NUT
7	4	000575	3/8 USS FLAT WASHER
8	1	095150	RAIL SC ARM AND LINKAGE ROD INSTRUCTIONS (16/20)



REV.	DATE	CHANGE RECORD	BY	APPVD	ECN	DRAFT	ANGULAR	SALES CATEGORY	PRODUCT LINE	SCALE	FIN. WT.	PART NO.
C	1/23/17	ADDED (1) 95150	AAS		1783	2'	±1°			N		8071
B	5/2/12	REMOVED (4) 007711	GDB		649							



THIRD ANGLE PROJECTION	FILENAME:
DECIMAL	SYMBOLY PER ANSI Y14.5
2PLC	NOTES:
3PLC	
MACHINE SAW, DRILL	DRAWN BY: DJR
SHEAR, PUNCH FORM	DRAWN/DATE: 7/28/03
TORCH, WELDING ROUGH CAST	APPVD/DATE:
	TITLE: ALUM. RAIL REPLACEMENT S-CLOSE ROD & LINK(85)

WOODBINE MFG. CO.
 BUS BROWN DRIVE
 WOODBINE, IOWA 51579

THE INFORMATION HERE IS CONFIDENTIAL AND MUST NOT BE USED IN ANYWAY DETRIMENTAL TO THE INTEREST OF WOODBINE MFG.