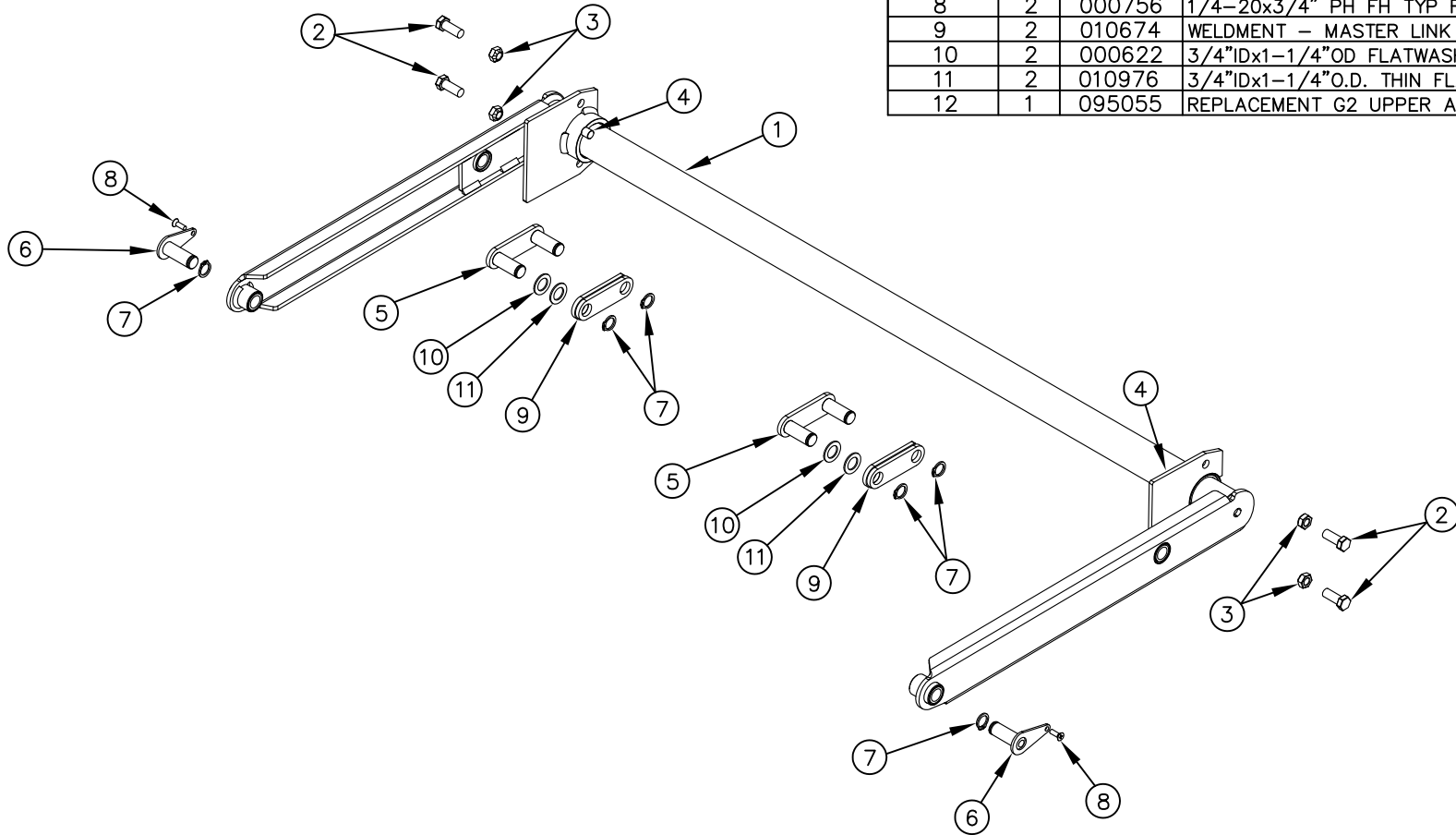


ITEM NO.	QTY.	PART NO.	DESCRIPTION
1	1	010726	G2 UPPER ARM ASSEMBLY COMP (60-42)
2	4	000521	1/2-13x1-1/4" HHCS GR5
3	4	000588	1/2-13 CROWN LOCK NUT
4	2	007497	.50"DIA.x.50"CYL SPACER
5	2	010673	G2 CLEVIS WELDMENT (42)
6	2	002879	G2 0.75"DIA.x2.109"PIN W/KEEPER
7	6	002025	3/4" EXTERNAL SNAP RING(G2) PLATED
8	2	000756	1/4-20x3/4" PH FH TYP F SS
9	2	010674	WELDMENT - MASTER LINK GUIDE (G2-42)
10	2	000622	3/4"IDx1-1/4"OD FLATWASHER(650)PLATED
11	2	010976	3/4"IDx1-1/4"O.D. THIN FLATWASHER (ZP)
12	1	095055	REPLACEMENT G2 UPPER ARM ASSEMBLY INSTRUCTIONS



				THIRD ANGLE PROJECTION			FILENAME:		WOODBINE MFG. CO. BUS BROWN DRIVE WOODBINE, IOWA 51579																	
							SYMBOLY PER ANSI Y14.5				NOTES:															
				<table border="1"> <tr> <td>DECIMAL</td> <td>2PLC</td> <td>3PLC</td> </tr> <tr> <td>MACHINE SAW, DRILL</td> <td>.030</td> <td>.015</td> </tr> <tr> <td>SHEAR, PUNCH FORM</td> <td>.060</td> <td>.030</td> </tr> <tr> <td>TORCH, WELDING ROUGH CAST</td> <td>.090</td> <td>.060</td> </tr> </table>			DECIMAL	2PLC	3PLC	MACHINE SAW, DRILL			.030	.015	SHEAR, PUNCH FORM	.060	.030	TORCH, WELDING ROUGH CAST	.090	.060	DRAWN BY. JCB		DRAWN/DATE 6/3/11		712-647-2050	
DECIMAL	2PLC	3PLC																								
MACHINE SAW, DRILL	.030	.015																								
SHEAR, PUNCH FORM	.060	.030																								
TORCH, WELDING ROUGH CAST	.090	.060																								
				APPVD/DATE		TITLE G2 60-42 REPAIR UPPER ARM ASSEMBLY		<small>THE INFORMATION HERE IS CONFIDENTIAL AND MUST NOT BE USED IN ANYWAY DETRIMENTAL TO THE INTEREST OF WOODBINE MFG.</small>																		
A	6/3/11	RELEASED TO PRODUCTION		JCB		449																				
REV.	DATE	CHANGE RECORD		BY	APPVD	ECN	DRAFT 2"	ANGULAR ±1"	SALES CATEGORY	PRODUCT LINE	SCALE 1:10	FIN. WT.	PART NO. 11308													