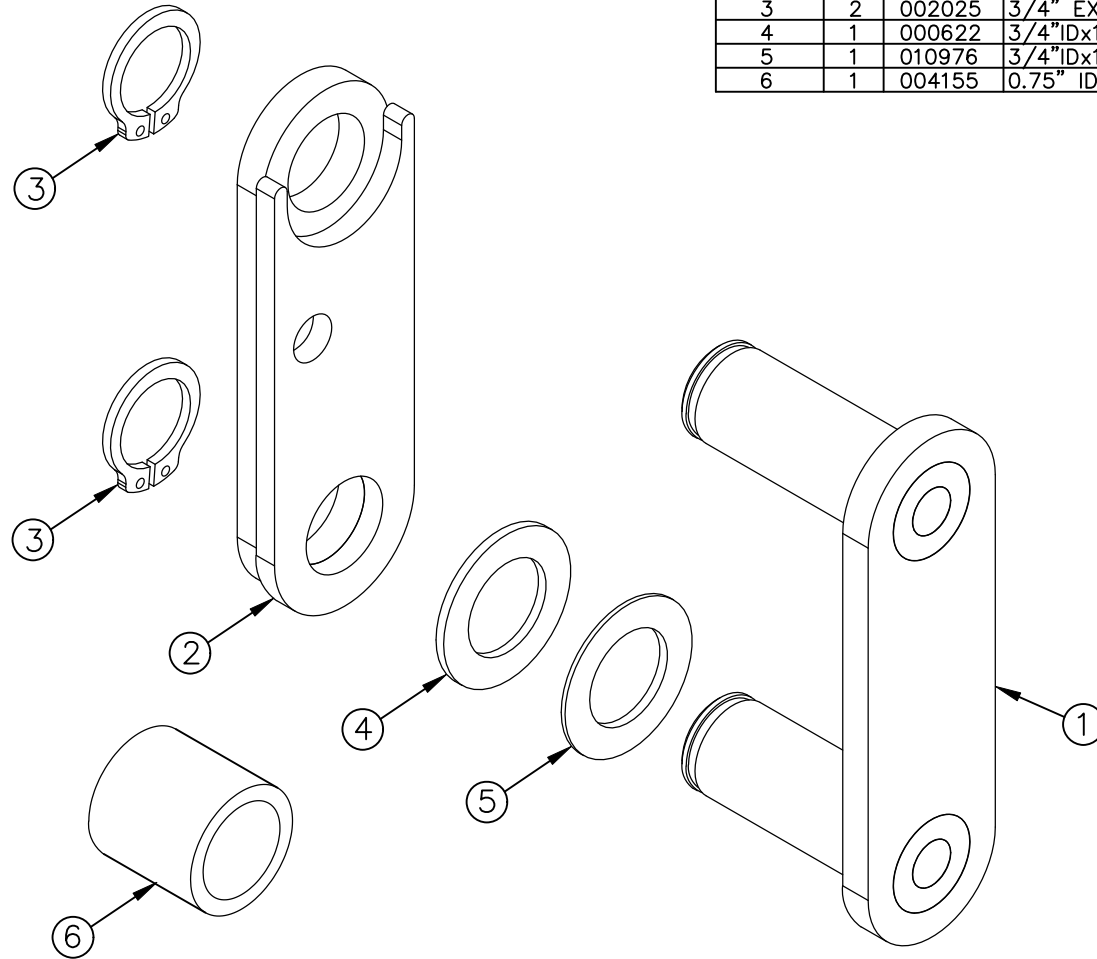
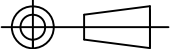



ITEM NO.	QTY.	PART NO.	DESCRIPTION
1	1	010673	G2 CLEVIS WELDMENT (42)
2	1	010674	WELDMENT/PLATED - MASTER LINK GUIDE (42G2)
3	2	002025	3/4" EXTERNAL SNAP RING(G2) PLATED
4	1	000622	3/4"IDx1-1/4"OD FLATWASHER(650)PLATED
5	1	010976	3/4"IDx1-1/4"O.D. THIN FLATWASHER (ZP)
6	1	004155	0.75" ID X 1.0" OD X 1" BEARING



						THIRD ANGLE PROJECTION 	DRAWN BY JCB	NOTES:	WOODBINE MFG. CO. BUS BROWN DRIVE WOODBINE, IOWA 51579 
					UNLESS OTHERWISE SPECIFIED	DRAWN/DATE 6/3/11			
					DIMENSIONS ARE IN INCHES TOLERANCES: FRACTIONAL ±1/16 ANGULAR MACH ±1° BEND ±1°	APPVD/DATE -	TITLE G2 REPLACEMENT CYLINDER CLEVIS ASSEMBLY (42)		
B	1/19/24	ADDED 004155	MK	2960		TWO PLACE DECIMAL ±0.030 THREE PLACE DECIMAL ±0.010	DO NOT SCALE DRAWING		
A	6/3/11	RELEASED TO PRODUCTION	JCB	449					
REV.	DATE	CHANGE RECORD	BY	APPVD	ECN	THE INFORMATION HERE IS CONFIDENTIAL AND MUST NOT BE USED IN ANY WAY DETRIMENTAL TO THE INTEREST OF WOODBINE MFG.	SCALE 3:4	WEIGHT -	PART NO. 11306