

# RAIL GATE

RAIL GATE SERIES



AMERICA'S FIRST NAME IN LIFTGATES™



Rail Gate Series - 1600 and 2000 lbs Capacity

# RAIL GATE SERIES - 1600 AND 2000 LBS CAPACITY

## INDUSTRY-LEADING PERFORMANCE AND FEATURES

Designed to fit many different sizes of flatbed, stake and van bodies, the Rail Gate Series gives an operator the choice of many platform sizes and options that make heavy-duty loading and unloading easier.

## THE POWER FOR YOUR WORK TRUCK

Lifting Capacity - 1600 and 2000 lbs.



## TOMMY GATE ADVANTAGES

- The Main Frame Box contains the electrical & hydraulic systems
  - Full size pump and motor
  - A Pressure Relief Valve helps prevent overloading the platform
  - Cylinder-mounted Flow Control Valves prevent rapid uncontrolled platform descent in the event of a hose failure.
- Recessed License Plate Holder
- Safety Trip Bar
- Secure drop-in style latches
- Standard recessed lights
- Platform Power Open & Close system



## STANDARD FEATURES



**MODEL GBR**  
TREADPLATE STEEL PLATFORM



**MODEL S37**  
TREADPLATE STEEL PLATFORM  
(SHOWN WITH OPTIONAL SPLIT ALUMINUM RETENTION RAMP)



**MODEL A**  
EXTRUDED ALUMINUM PLATFORM



**MODEL RF**  
TWO-PIECE FOLDING PLATFORM

## FEATURES



**Curb-side Fixed Control:**

- Toggle style switch
- Steel shield
- Timer deactivates 90 seconds after last operation.



150 Amp circuit breaker with manual reset helps protect the electrical system.



The full-length molded ground and power cable provides a direct connection from the liftgate to the truck battery, ensuring solid electrical connections.



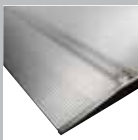
Drop-In Style Latches and Platform Latch Lock



Standard Recessed Light Kit



Aluminum Sliders feature polyethylene wear pads and operate smoothly with only lightweight oil.



Standard 12 inch loading taper for extruded aluminum platforms. (shown with optional split cart stop)



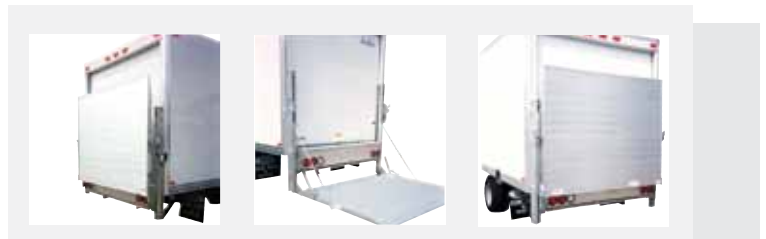
### POWER OPEN & CLOSE

Standard on all models of the Rail Gate Series (except GBR and RF models and some optional depths - see chart on page 5), the cam arm system powers the platform close.



### SAFETY TRIP BAR

The standard Safety Trip Bar, located below the Rail Gate's enclosed hydraulic and electrical systems, will immediately stop the upward movement of the platform if any object becomes trapped between the platform and the liftgate frame. Tommy Gate's Rail Gate Safety Trip Bar is standard safety equipment, exclusive to its class.



### All-Aluminum Model

An Aluminum Frame liftgate with Extruded Aluminum platform is available in most model configurations.

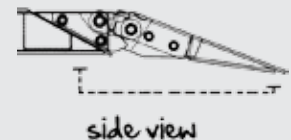
### Above Bed (AB)

The platform on an Above Bed Rail Gate model will travel above the truck's bed (up to 54" total from the ground). The vertical travel of the platform above the bed will be the maximum travel (54 inches off the ground) minus the truck's bed height.



### Optional Split Retention Ramp

Uniquely designed locking mechanism allows the ramp to be easily engaged and disengaged. The ramp tips below the platform's horizontal plane to allow for an extra 1" of ground-reach.



## OPTIONS



Optional Split Retention Ramp for steel platforms. Light Aluminum design makes ramp easy to operate. Drops below the plain of the platform to ensure ground level. (Only available with the Power & Open Close System).



The Remote Pendant Control can be specified in addition to or in place of the standard Curb-side Fixed Control.



Optional rubber platform bumpers provide a rubber cushion between the platform and the ground surface.

## STEEL PLATFORM/STEEL FRAME

- Treadplate Steel loading surface
- Both sides of the platform and taper are completely sealed along the full edge of the platform.
- Taper
  - 6" Reinforced taper
- Optional Split Retention Ramp
  - Available on Model 85 and 89 Steel Platforms.
  - 12" Aluminum Retention Ramp
  - Provides 5" of additional platform loading depth.



## STEEL GAS BOTTLE RACK/STEEL FRAME

- Lifting capacity: 2000 lbs
- A Gas Bottle Rack Model incorporates a platform designed specifically for handling various sizes of gas bottles or other liquid or gas containers. A 29.25" tall folding retention fence allows the containers to be secured while the platform is raised and lowered. The fence folds up securely with the platform when the platform is closed.
- GBR Platforms have a Torsion Bar (closure assist).
- The taper and fence can be folded down and the platform can be run vertically down below the truck's bed (depending on bed height).
- A 12-inch steel hinged folding ramp aids in moving the containers on and off the platform.



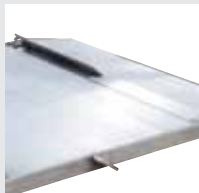
## EXTRUDED ALUMINUM PLATFORM

- The Extruded Aluminum Platform is made of 6061-T6 aircraft-quality aluminum extrusions locked together with tongue and groove connections – no skip welding is used.
- Double-walled construction for platform strength
- Extruded Aluminum surface resists weather-related corrosion.
- Available with a Steel frame or in an All-Aluminum Model



## SPLIT CART STOP

- The optional Split Cart Stop is integrated into the platform and is spring-activated with a lever. The Cart Stop is split in two sections across the width of the platform; each side of the Cart Stop can be activated or locked down independently.
- Note – when the Stop is activated, the platform loses 5 inches of flat, loadable surface at the Cart Stop's extrusion.



## RAIL SERIES SPECS

Model (note model numbers)	Capacity (pounds)	Travel (min-max)	Gate Width (outside uprights)	Clear Opening (inside uprights)	Platform Loadable Area (WxD)	Platform Taper	Application Code	Gate Weight* (pounds)
All Steel Lift - Treadplate steel platform, steel frame								
85-16 S37	1600	32-54	90	83	85x37	6	B	790
85-16 S42	1600	32-54	90	83	85x42	6	B	840
85-16 S37 AB	1600	32-54	90	81	85x37	6	B	820
85-16 S42 AB	1600	32-54	90	81	85x42	6	B	870
89-16 S37	1600	32-54	94	87	89x37	6	A	810
89-16 S42	1600	32-54	94	87	89x42	6	A	860
89-16 S37 AB	1600	32-54	94	85	89x37	6	A	840
89-16 S42 AB	1600	32-54	94	85	89x42	6	A	890
85-20 S37	2000	32-54	90	83	85x37	6	B	790
85-20 S42	2000	32-54	90	83	85x42	6	B	840
85-20 S37 AB	2000	32-54	90	81	85x37	6	B	820
85-20 S42 AB	2000	32-54	90	81	85x42	6	B	870
89-20 S37	2000	32-54	94	87	89x37	6	A	810
89-20 S42	2000	32-54	94	87	89x42	6	A	860
89-20 S37 AB	2000	32-54	94	85	89x37	6	A	840
89-20 S42 AB	2000	32-54	94	85	89x42	6	A	890
Aluminum/Steel Lift - Extruded Aluminum platform, steel frame								
85-16 A	1600	32-54	90	83	85x55	12	B	695
85-16 A AB	1600	32-54	90	81	85x55	12	B	725
89-16 A	1600	32-54	94	87	89x55	12	A	715
89-16 A AB	1600	32-54	94	85	89x55	12	A	745
85-20 A	2000	32-54	90	83	85x55	12	B	695
85-20 A AB	2000	32-54	90	81	85x55	12	B	725
89-20 A	2000	32-54	94	87	89x55	12	A	715
89-20 A AB	2000	32-54	94	85	89x55	12	A	745
All Aluminum Lift - Extruded Aluminum platform, aluminum frame								
A85-16 A	1600	32-54	92	83	85x55	12	C	585
A85-16 A AB	1600	32-54	92	81	85x55	12	C	610
A89-16 A	1600	32-54	96	87	89x55	12	C	600
A89-16 A AB	1600	32-54	96	85	89x55	12	C	620
A85-20 A	2000	32-54	92	83	85x55	12	C	585
A85-20 A AB	2000	32-54	92	81	85x55	12	C	610
A89-20 A	2000	32-54	96	87	89x55	12	C	600
A89-20 A AB	2000	32-54	96	85	89x55	12	C	620
Steel Gas Bottle Rack - Treadplate steel platform with folding Gas Bottle Rack fence and taper, steel frame								
85-20 S GBR	2000	32-54	90	83	85x30	12	B	785
85-20 S AB GBR	2000	32-54	90	81	85x30	12	B	815
89-20 S GBR	2000	32-54	94	87	89x30	12	A	805
89-20 S AB GBR	2000	32-54	94	85	89x30	12	A	840

\* Add 150 lbs for shipping weight.

All measurements in inches, unless noted  
AB - Above Bed

## APPLICATION CODES

Steel Frame Rail Gates Body Style	Body Width
A. Flatbed, Stake or Van	96"
B. Flatbed, Stake or Van	90"
C. For the Aluminum Frame widths	(see chart to the right)

## OPTIONAL MODEL WIDTHS

Available for most Rail Gate configurations - measurements in inches.				
Model	Max. Travel	Gate Width	Platform Width	Body Size (Width)
Model 73	52	78	73	80
Model 79	52	84	79	85
Model 95	54	100	95	102

## ALL-ALUMINUM MODELS - MOUNTING

All-Aluminum models can be bolted onto the truck body using the attached flanges (aluminum frame only). The Gate Width measurements include the flanges (one each side-outside the frame) where the bolt holes are located.

	Gate Width (outside flanges)	Distance between bolt-hole centers (width)	Max Travel
Model 73	80"	79 3/8"	52"
Model 79	86"	85 3/8"	52"
Model 85	92"	91 3/8"	54"
Model 89	96"	95 3/8"	54"

## PLATFORM POSITIONS



Platform at bed height unfolded.



Platform at bed height folded.



Platform in dock loading position.



 **TOMMY GATE® RF**

**NEW RAILGATE MODEL!**



**Liftgates can be lowered in the vertical position, providing quick access to the back of the truck for easy fork and dock loading.**

## FEATURES

### Torsion Bar

The RF (Railgate Folding) is standard with a closure-assist Torsion Bar to aid in opening and closing of the platform.

Please Note: The Power Open & Close system is not available on RF Models.



Quality U.S. craftsmanship for over 40 years.

## RAIL SERIES RF - TWO-PIECE FOLDING PLATFORM SPECS

Model (note model numbers)	Capacity (pounds)	Travel (min-max)	Gate Width (outside uprights)	Clear Opening (inside uprights)	Platform Loadable Area (WxD)	Platform Taper	Application Code	Gate Weight* (pounds)
Aluminum Two Piece- Extruded Aluminum platform, steel frame								
Two Piece Platform = 30" Base + 15" Flat Loading + 6" Taper								
RF-85-16 A AB 45-6	1600	32-54	90	81	85x45	6	B	659
RF-89-16 A AB 45-6	1600	32-54	94	85	89x45	6	A	674
RF-85-20 A AB 45-6	2000	32-54	90	81	85x45	6	B	659
RF-89-20 A AB 45-6	2000	32-54	94	85	89x45	6	A	674
Aluminum Two Piece - Extruded Aluminum platform, steel frame								
Two Piece Platform = 35" Base + 10" Flat Loading + 12" Taper								
RF-85-16 A AB 45-12	1600	32-54	90	81	85x45	12	B	673
RF-89-16 A AB 45-12	1600	32-54	94	85	89x45	12	A	688
RF-85-20 A AB 45-12	2000	32-54	90	81	85x45	12	B	673
RF-89-20 A AB 45-12	2000	32-54	94	85	89x45	12	A	688
Aluminum Two Piece- Extruded Aluminum platform, steel frame								
Two Piece Platform = 35" Base + 15" Flat Loading + 6" Taper								
RF-85-16 A AB 50-6	1600	32-54	90	81	85x50	6	B	679
RF-89-16 A AB 50-6	1600	32-54	94	85	89x50	6	A	695
RF-85-20 A AB 50-6	2000	32-54	90	81	85x50	6	B	679
RF-89-20 A AB 50-6	2000	32-54	94	85	89x50	6	A	695
All Aluminum Two Piece - Extruded Aluminum platform, aluminum frame								
Two Piece Platform = 30" Base + 15" Flat Loading + 6" Taper								
RF-A85-16 A AB 45-6	1600	32-54	92	81	85x45	6	C	539
RF-A89-16 A AB 45-6	1600	32-54	96	85	89x45	6	C	550
RF-A85-20 A AB 45-6	2000	32-54	92	81	85x45	6	C	539
RF-A89-20 A AB 45-6	2000	32-54	96	85	89x45	6	C	550
All Aluminum Two Piece - Extruded Aluminum platform, aluminum frame								
Two Piece Platform = 35" Base + 10" Flat Loading + 12" Taper								
RF-A85-16 A AB 45-12	1600	32-54	92	81	85x45	12	C	553
RF-A89-16 A AB 45-12	1600	32-54	96	85	89x45	12	C	564
RF-A85-20 A AB 45-12	2000	32-54	92	81	85x45	12	C	553
RF-A89-20 A AB 45-12	2000	32-54	96	85	89x45	12	C	564
All Aluminum Two Piece - Extruded Aluminum platform, aluminum frame								
Two Piece Platform = 35" Base + 15" Flat Loading + 6" Taper								
RF-A85-16 A AB 50-6	1600	32-54	92	81	85x45	6	C	559
RF-A89-16 A AB 50-6	1600	32-54	96	85	89x45	6	C	571
RF-A85-20 A AB 50-6	2000	32-54	92	81	85x45	6	C	559
RF-A89-20 A AB 50-6	2000	32-54	96	85	89x45	6	C	571
note: All gates are above bed models. Select a base platform depth that is less than the vehicle's loaded bed height.								

### Aluminum Two Piece Platform with Aluminum Flipper

#### 35+15+6

The base platform is 35 inches of extruded aluminum. The flipper is extruded aluminum and has 15 inches of flat loading with a 6 -inch taper.

The platform can be lowered vertically for dock or fork truck loading.

Aluminum Two Piece Platform with Aluminum Flipper

#### 35+10+12

The base platform is extruded aluminum and is 35 inches deep. The aluminum flipper is 10 inches of flat loading with a 12-inch taper.

The platform can be lowered vertically for dock or fork truck loading.

Aluminum Two Piece Platform with Aluminum Flipper

#### 30+15+6

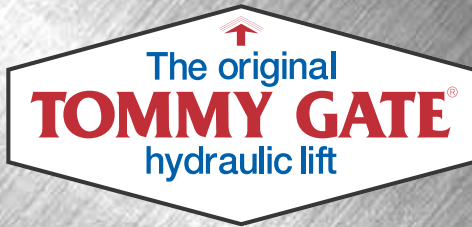
The base platform is 30 inches of extruded aluminum. The flipper is extruded aluminum and has 15 inches of flat loading with a 6-inch taper.

The platform can be lowered vertically for dock or fork truck loading.



[www.tommygate.com](http://www.tommygate.com)  
Video of liftgates in action!

Call 1-800-LIFTGATE for more information.



1210 Lincoln Way, Woodbine, IA 51579

**1-800-LIFTGATE** (1-800-543-8428)  
(712) 647-2050 | Fax (712) 647-2417  
info@tommygate.com

Corporate Office:  
11010 N Tatum Blvd. Suite 100, Phoenix AZ 85028  
(602) 955-2144 Fax: (602) 955-3902



[www.tommygate.com](http://www.tommygate.com)

**More photos!**  
**Video of liftgates in action!**

The latest news, specifications and  
downloadable literature

### Distributed By:

**Warning:** Tommy Lifts are industrial products for material handling only and are not to be used as a personnel or wheelchair lift. For safe handling and operating instructions, visit [www.tommygate.com](http://www.tommygate.com).

**Caution:** Before installing this Lift Gate, please observe the Vehicle Loading Limitations. These loading limitations are outlined in the Vehicle's Owner's Manual and the Safety Compliance Certification Label located on the driver's door pillar.

**Note:** Tommy Gate Company reserves the right to make changes in manufacturing to comply with current or new engineering specification changes where applicable.

**Note:** Lift Gate installers are to treat vehicles as incomplete and are therefore responsible for vehicle compliance with local, state and federal lighting regulations (FMVSS 108).



Every Tommy Gate liftgate is proudly made in Woodbine, Iowa

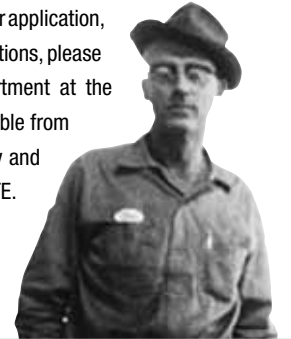
### OUR HISTORY

In 1965, Delbert "Bus" Brown designed and built the first Tommy Lift hydraulic liftgate in his machine shop in Woodbine, Iowa. Named after his son, the TOMMY LIFT® original hydraulic liftgate was designed to help move heavy loads into and out of pickup trucks.



Still in Iowa after 40 years, Tommy Gate Company has a newly-expanded 150,000 square foot factory with a state-of-the-art production system that manufactures today's finest liftgates.

If you have any questions about your application, Tommy Gate liftgate features or options, please call our Customer Service department at the Woodbine Factory. They are available from 7 am to 5 pm CST Monday-Friday and can be reached at 1-800-LIFTGATE.



For more information and specifications on specific liftgate models, please see the separate sales literature for the various applications and models.



- Service/Utility Body Series



- Flatbed, Stake & Van/Lift N Dump



- Pickup Series



- Cargo Van & Sprinter Series