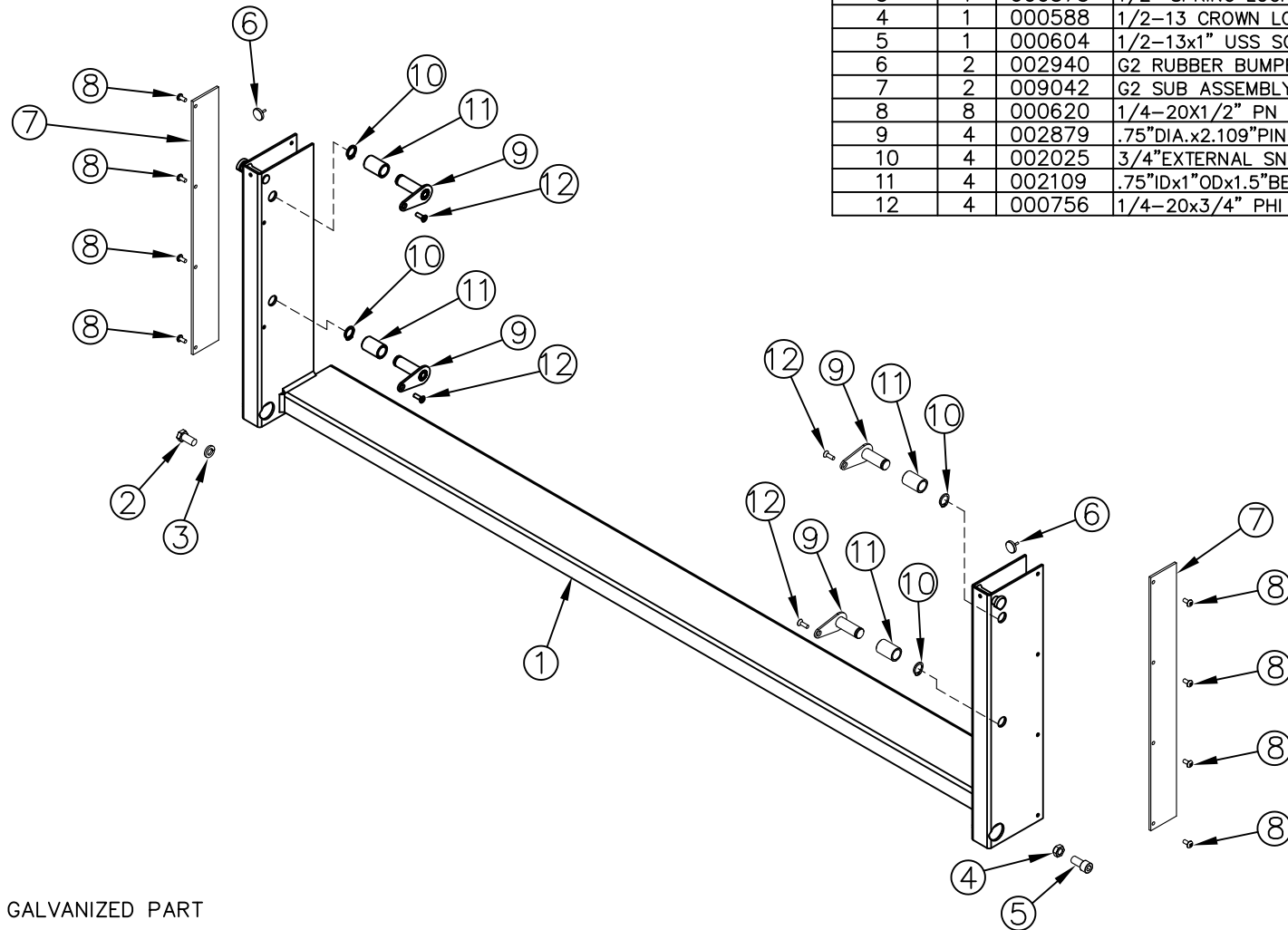


| ITEM NO. | QTY. | PART NO. | DESCRIPTION |
|----------|------|----------|---|
| 1 | 1 | 014159* | G2 SUB ASSEMBLY(87-42) |
| 2 | 1 | 000587 | 1/2-13x1" HHCS GR5 |
| 3 | 1 | 000573 | 1/2" SPRING LOCK WASHER |
| 4 | 1 | 000588 | 1/2-13 CROWN LOCK NUT |
| 5 | 1 | 000604 | 1/2-13x1" USS SOC HD CAP S.S. |
| 6 | 2 | 002940 | G2 RUBBER BUMPER |
| 7 | 2 | 009042 | G2 SUB ASSEMBLY BELTING 21-3/8" |
| 8 | 8 | 000620 | 1/4-20X1/2" PN HD TY FS(G2) |
| 9 | 4 | 002879 | .75"DIA.x2.109"PIN w/FLAT HEAD KEEPER(G2) |
| 10 | 4 | 002025 | 3/4"EXTERNAL SNAP RING (G2) PLATED |
| 11 | 4 | 002109 | .75"IDx1"ODx1.5"BEARING (G2) |
| 12 | 4 | 000756 | 1/4-20x3/4" PHI FH TYPE F SS |



NOTE: "*" INDICATES GALVANIZED PART

| | | | | THIRD ANGLE PROJECTION | | | FILENAME: | | | | WOODBINE MFG. CO. BUS BROWN DRIVE WOODBINE, IOWA 51579 | | | | | | | | | | | | | | | | | | | |
|--|------|------|--|--|--|--|------------------------|------|------|--------------------|--|------|-------------------|------|----------------|--|--------------|--|------------|---------------------------|----------|------|------------------|--|--|--|--|--|--|--|
| | | | | | | | SYMBOLY PER ANSI Y14.5 | | | | | | | | NOTES: | | | | | | | | | | | | | | | |
| | | | | <table border="1"> <tr> <th>DECIMAL</th> <th>2PLC</th> <th>3PLC</th> </tr> <tr> <td>MACHINE SAW, DRILL</td> <td>.030</td> <td>.015</td> </tr> <tr> <td>SHEAR, PUNCH FORM</td> <td>.060</td> <td>.030</td> </tr> <tr> <td>TORCH, WELDING ROUGH CAST</td> <td>.090</td> <td>.060</td> </tr> </table> | | | DECIMAL | 2PLC | 3PLC | MACHINE SAW, DRILL | .030 | .015 | SHEAR, PUNCH FORM | .060 | | | | | .030 | TORCH, WELDING ROUGH CAST | .090 | .060 | DRAWN BY: AAS | | | | <table border="1"> <tr> <td colspan="4">THE INFORMATION HERE IS CONFIDENTIAL AND MUST NOT BE USED IN ANYWAY DETRIMENTAL TO THE INTEREST OF WOODBINE MFG.</td> </tr> </table> | | | |
| DECIMAL | 2PLC | 3PLC | | | | | | | | | | | | | | | | | | | | | | | | | | | | |
| MACHINE SAW, DRILL | .030 | .015 | | | | | | | | | | | | | | | | | | | | | | | | | | | | |
| SHEAR, PUNCH FORM | .060 | .030 | | | | | | | | | | | | | | | | | | | | | | | | | | | | |
| TORCH, WELDING ROUGH CAST | .090 | .060 | | | | | | | | | | | | | | | | | | | | | | | | | | | | |
| THE INFORMATION HERE IS CONFIDENTIAL AND MUST NOT BE USED IN ANYWAY DETRIMENTAL TO THE INTEREST OF WOODBINE MFG. | | | | | | | | | | | | | | | | | | | | | | | | | | | | | | |
| | | | | | | | DRAWN/DATE 9/6/24 | | | | | | | | | | | | | | | | | | | | | | | |
| | | | | | | | APPVD/DATE | | | | TITLE GALVANIZED G2 87-42 LOW PROFILE REPAIR SUB ASSEMBLY | | | | | | | | | | | | | | | | | | | |
| A 9/6/24 | | | | RELEASED TO PRODUCTION | | | AAS 3051 | | | | | | | | | | | | | | | | | | | | | | | |
| REV. DATE | | | | CHANGE RECORD | | | BY APPVD ECN | | | | DRAFT 2" | | ANGULAR ±1" | | SALES CATEGORY | | PRODUCT LINE | | SCALE 1:12 | | FIN. WT. | | PART NO. 18321 | | | | | | | |