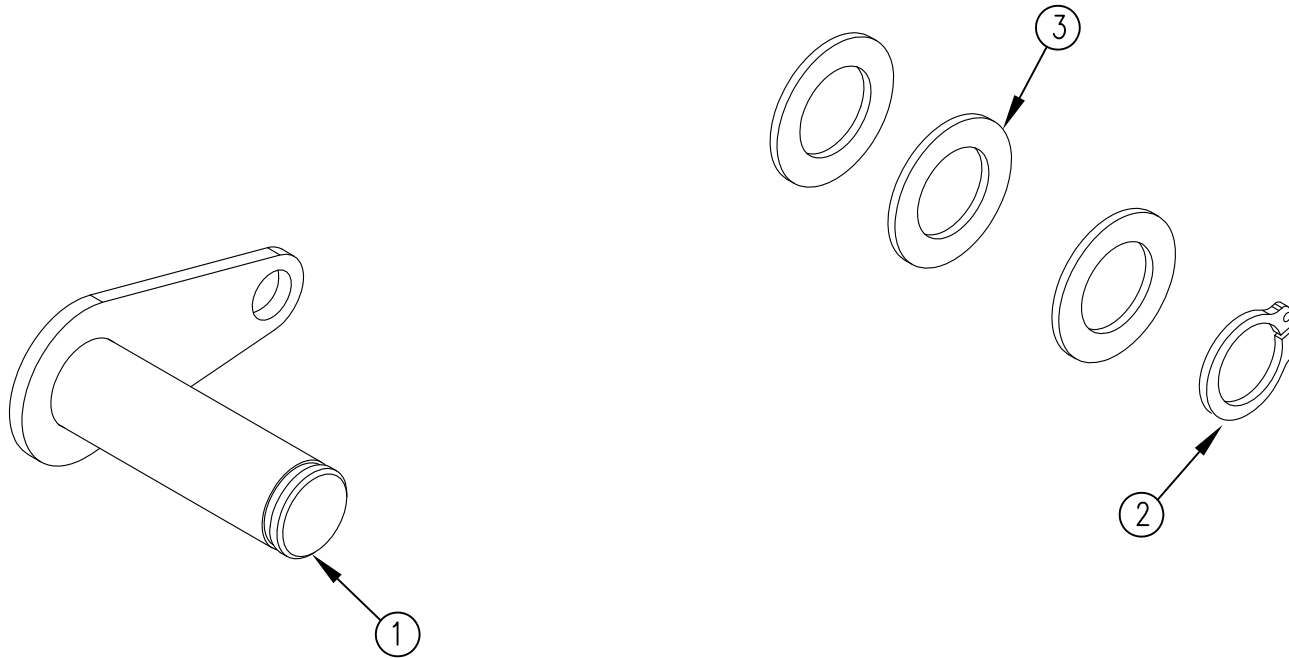


ITEM NO.	QTY.	PART NO.	DESCRIPTION
1	1	014659	.75"DIAx2.59" PIN W/FLAT HEAD KEEPER
2	1	002025	3/4" EXTERNAL SNAP RING(G2)PLATED
3	3	000622	3/4"IDx1-1/4"OD FLAT WASHER (650) *ZP*



				THIRD ANGLE PROJECTION			FILENAME:		WOODBINE MFG. CO. BUS BROWN DRIVE WOODBINE, IOWA 51579																				
							SYMBOLY PER ANSI Y14.5				NOTES:																		
				<table border="1"> <thead> <tr> <th>DECIMAL</th> <th>2PLC</th> <th>3PLC</th> </tr> </thead> <tbody> <tr> <td>MACHINE SAW, DRILL</td> <td>.030</td> <td>.015</td> </tr> <tr> <td>SHEAR, PUNCH FORM</td> <td>.060</td> <td>.030</td> </tr> <tr> <td>TORCH, WELDING ROUGH CAST</td> <td>.090</td> <td>.060</td> </tr> </tbody> </table>			DECIMAL	2PLC	3PLC	MACHINE SAW, DRILL			.030	.015	SHEAR, PUNCH FORM	.060	.030	TORCH, WELDING ROUGH CAST	.090	.060	DRAWN BY: AAS		APPVD/DATE				THE INFORMATION HERE IS CONFIDENTIAL AND MUST NOT BE USED IN ANYWAY DETRIMENTAL TO THE INTEREST OF WOODBINE MFG.		
DECIMAL	2PLC	3PLC																											
MACHINE SAW, DRILL	.030	.015																											
SHEAR, PUNCH FORM	.060	.030																											
TORCH, WELDING ROUGH CAST	.090	.060																											
A				3/29/16			RELEASED TO PRODUCTION		AAS		1606																		
REV.				DATE			CHANGE RECORD			BY		APPVD		ECN		DRAFT 2'		ANGULAR ±1'		SALES CATEGORY		PRODUCT LINE		SCALE 1:8		FIN. WT.		PART NO. 14719	