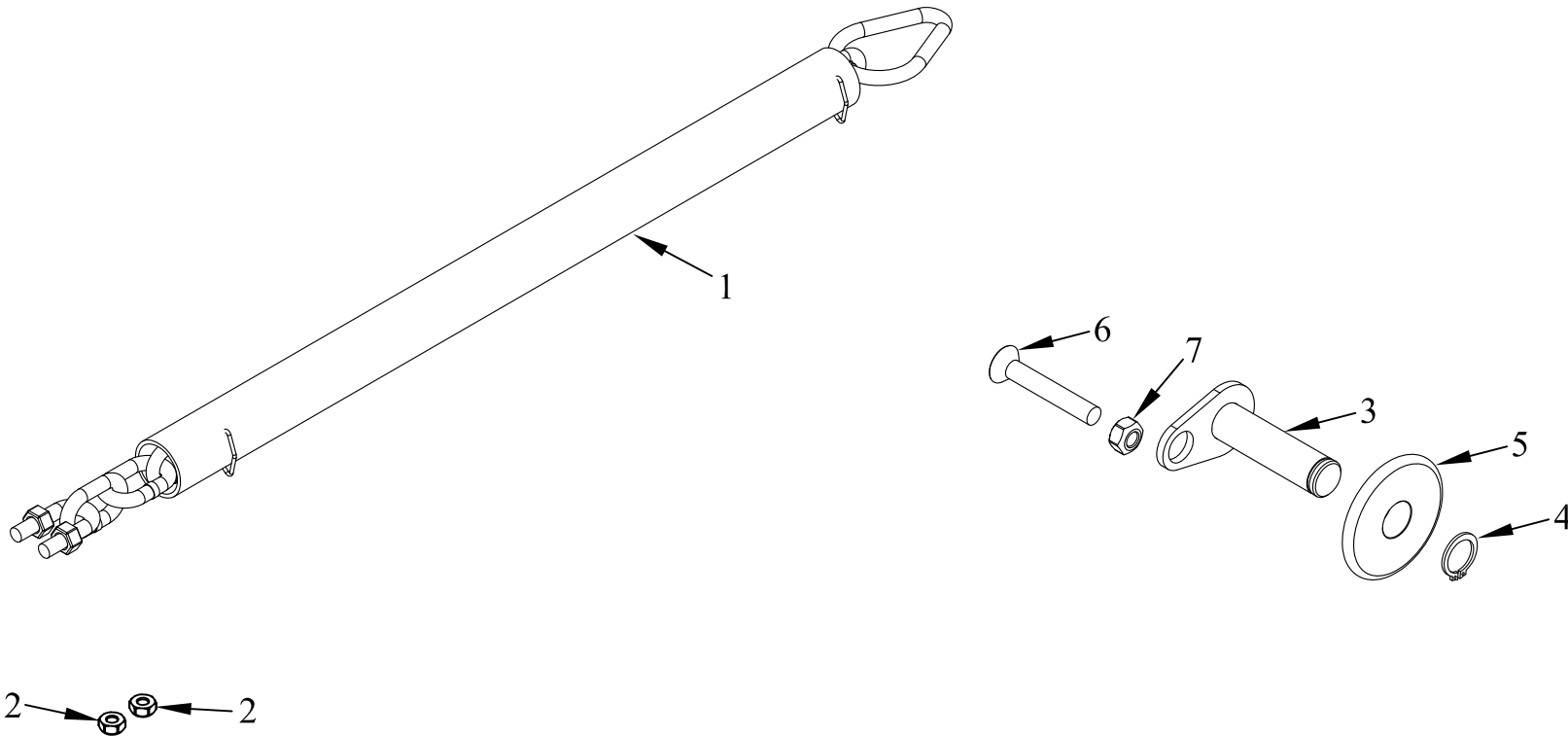


ITEM NO.	QTY.	PART NO.	DESCRIPTION
1	1	10131	40" TRAVEL CABLE CHAIN W/ CLOTH CHAIN COVER
2	2	605	3/8-16 USS CROWN LOCK NUT
3	1	10340	DROP PIN ASSEMBLY
4	1	615	5/8" EXTERNAL RETAINING RING-PLATED
5	1	10337	DROP CHAIN MACHINED WASHER
6	1	10467	5/16*18 X 2" FLHD SHCS - ZINC PLATED
7	1	606	5/16-18 USS CROWN LOCK NUT
8	1	95042	CABLE INSTALLATION INSTRUCTIONS (36-50)



REV.	DATE	CHANGE RECORD	BY	APPVD	ECN	DRAFT	ANGULAR	FILENAME:	SYMBOLY PER ANSI Y14.5	NOTES:	WOODBINE MFG. CO. BUS BROWN DRIVE WOODBINE, IOWA 51579
E	2/1/12	REPLACED 10132 WITH 10131	JCB		592	THIRD ANGLE PROJECTION					712-647-2050
D	3/1/10	REMOVED PN004768; ADDED PN10340, 010337, 010467, 000606	MTC		270	DECIMAL	2PLC	3PLC	DRAWN BY.		<small>THE INFORMATION HERE IS CONFIDENTIAL AND MUST NOT BE USED IN ANYWAY DETRIMENTAL TO THE INTEREST OF WOODBINE MFG.</small>
C	9/29/09	CHANGED TO REFLECT PRODUCTION	LSB	LSB	206	MACHINE SAW, DRILL	.030	.015	DJR		
						SHEAR, PUNCH FORM	.060	.030	DRAWN/DATE	11/16/04	
						TORCH, WELDING ROUGH CAST	.090	.060		TITLE	1036-1040 REPLACEMENT PLATFORM CHAIN(24 LINKS)
						DRAFT 2'	ANGULAR ±1'			SCALE	N
										FIN. WT.	
										PART NO.	3841