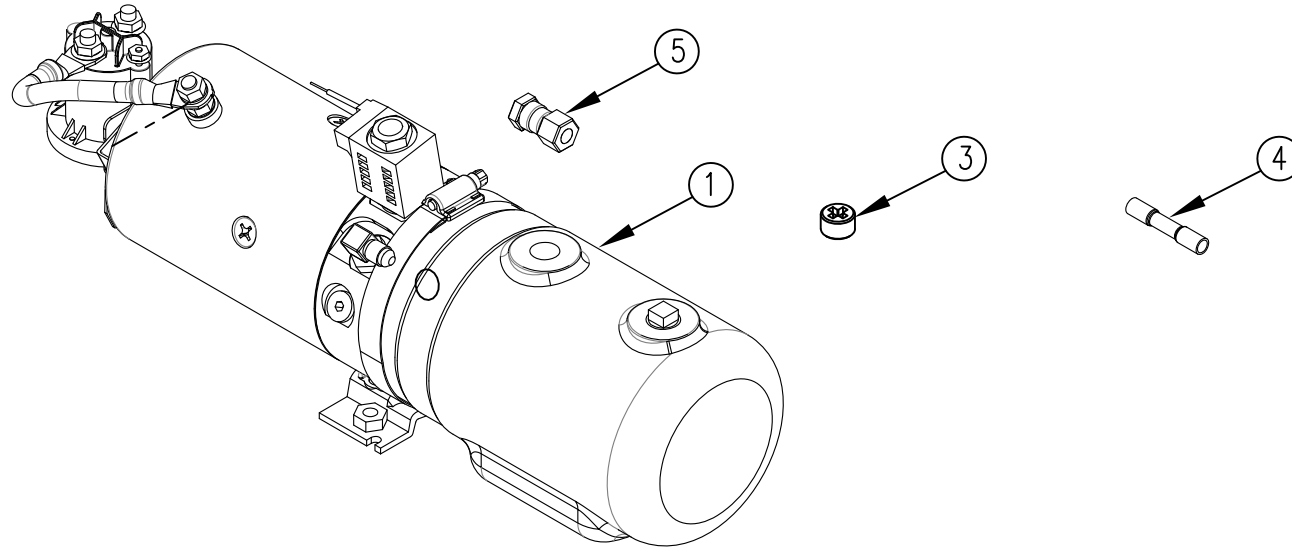


ITEM NO.	QTY.	PART NO.	DESCRIPTION
1	1	004337	MONARCH UNIT 319-0314 1.5 QT(3800)1000
2	0.335 GAL	009034	HYDRAULIC OIL
3	1	004403*	VENT PLUG
4	1	009089	16-14 HEAT SHRINK BUTT CONNECTOR
5	1	012967	#4 FJIC TO #4 FEMALE NPT ADAPTOR (6506-4-4)
6	1	095048	REPLACEMENT POWER UNIT INSTALLATION INSTR.

\* ACCOUNTING DO NOT USE FOR B.O.M.



REV.	DATE	CHANGE RECORD	BY	APPVD	ECN	THIRD ANGLE PROJECTION	FILENAME:	SYMBOLY PER ANSI Y14.5	NOTES:	WOODBINE MFG. CO. BUS BROWN DRIVE WOODBINE, IOWA 51579 712-647-2050		
C	11/14/13	ADDED (1) 012967	GDB		1004	DECIMAL MACHINE SAW,DRILL	2PLC .030	3PLC .015	DRAWN BY: DJR			
B	7/23/10	CHANGED QTY OF 9034 FROM 0.375 TO 0.335; ADDED (1) 9089 AND (1) 95048	JCB		310	SHEAR, PUNCH FORM	.060	.030	DRAWN/DATE 6/30/04			
						TORCH, WELDING ROUGH CAST	.090	.060	APPVD/DATE	THE INFORMATION HERE IS CONFIDENTIAL AND MUST NOT BE USED IN ANYWAY DETRIMENTAL TO THE INTEREST OF WOODBINE MFG.		
						DRAFT 2"	ANGULAR ±1"	SALES CATEGORY	PRODUCT LINE	SCALE 1:4	FIN. WT.	PART NO. 4363