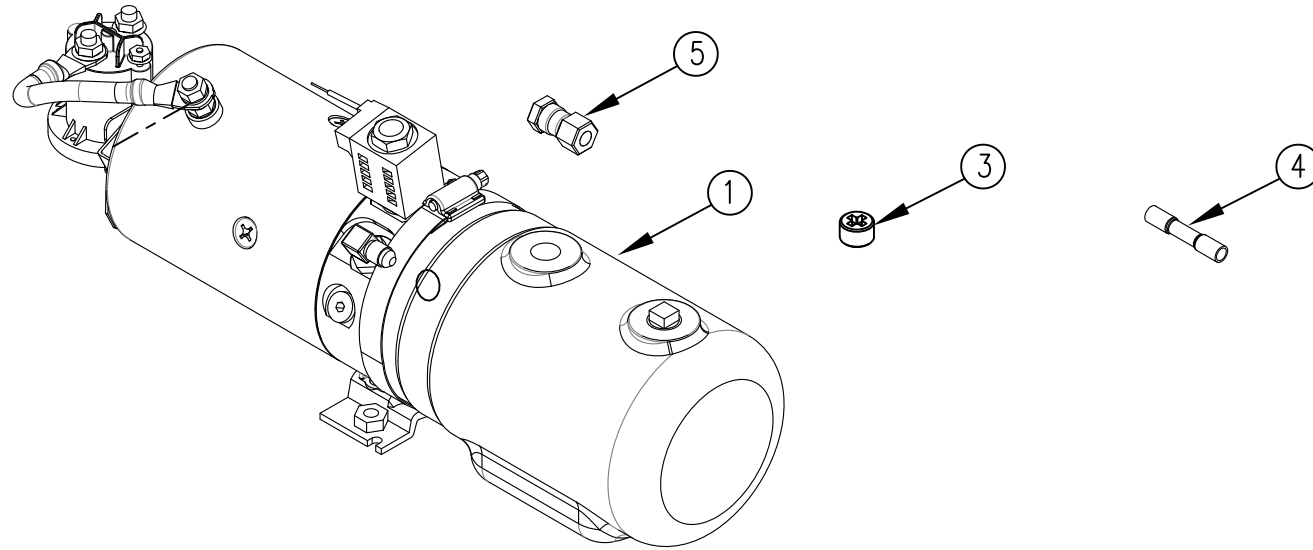


ITEM NO.	QTY.	PART NO.	DESCRIPTION
1	1	004337	MONARCH UNIT 319-0314 1.5 QT(3800)1000
2	0.335 GAL	009034	HYDRAULIC OIL
3	1	004403*	VENT PLUG
4	1	009089	16-14 HEAT SHRINK BUTT CONNECTOR
5	1	012967	#4 FJIC TO #4 FEMALE NPT ADAPTOR (6506-4-4)
6	1	095048	REPLACEMENT POWER UNIT INSTALLATION INSTR.

* ACCOUNTING DO NOT USE FOR B.O.M.



REV.	DATE	CHANGE RECORD	BY	APPVD	ECN	THIRD ANGLE PROJECTION			FILENAME:		NOTES:	WOODBINE MFG. CO. BUS BROWN DRIVE WOODBINE, IOWA 51579 712-647-2050	
						DECIMAL	2PLC	3PLC	SYMBOLY PER ANSI Y14.5				
C	11/14/13	ADDED (1) 012967	GDB		1004	MACHINE SAW, DRILL	.030	.015	DRAWN BY: DJR				
B	7/22/10	CHANGED QTY OF 9034 FROM 0.275 TO 0.335; ADDED (1) 9089 AND (1) 95048	JCB		310	SHEAR, PUNCH FORM	.060	.030	DRAWN/DATE 6/30/04				<small>THE INFORMATION HERE IS CONFIDENTIAL AND MUST NOT BE USED IN ANYWAY DETRIMENTAL TO THE INTEREST OF WOODBINE MFG.</small>
A	9/10/08	UPDATED BOM	JCB	JCB		TORCH, WELDING ROUGH CAST	.090	.060	APPVD/DATE	TITLE M319 REPLACEMENT PUMP&MOTOR(3800PSI)1.5QT.**1034, 1036, 1040			
						DRAFT 2'	ANGULAR ±1'		SALES CATEGORY	PRODUCT LINE	SCALE 1:4	FIN. WT.	PART NO. 4362