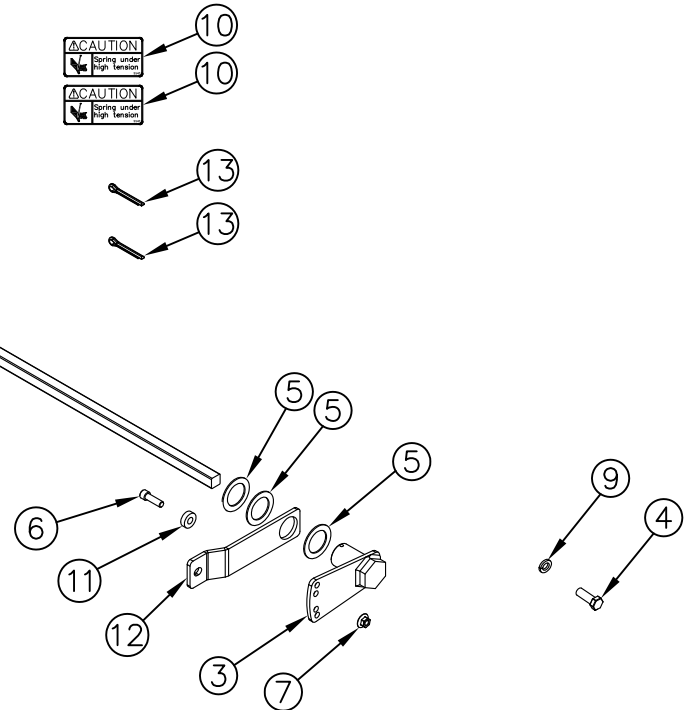
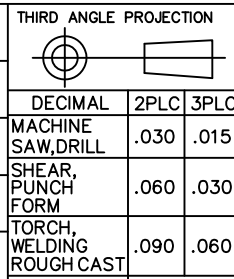


ITEM NO.	QTY.	PART NO.	DESCRIPTION
1	1	005229 *	5/8"SQ.X86-3/4" RAIL TORSION SPRING (85)
2	1	011157	TORSION ARM RAIL (DR) 5/8" SQ
3	1	001989	5/8" RAIL TORSION SPRING HOLDER (PASS.)
4	2	000521	1/2-13x1-1/4" HHCS GR5
5	5	000582	1-1/2" NARROW RIM MACHINE BUSHING
6	1	000596	3/8-16x1-1/2" USS SOC HD CAP
7	1	000553	3/8-16 LARGE FLANGE LOCK NUT
8	1	004720	1/4"x2" COTTER PIN
9	2	000573	1/2" SPRING LOCK WASHER
10	2	009540	CAUTION DECAL-TORSION SPRING
11	1	013291	5/16" TORSION SPRING SPACER
12	1	011155	TORSION ARM RAIL (DR)
13	2	004721	1/8"x3/4" COTTER PIN
14	1	095087	REPAIR RAILGATE TORSION ASSIST SPRING INSTRUCTIONS



NOTE: "*" INDICATES INDIVIDUAL PARTS ARE LISTED IN ACCOUNTING.

REV.	DATE	CHANGE RECORD	BY	APPVD	ECN	DRAFT	ANGULAR	SALES CATEGORY	PRODUCT LINE	SCALE	FIN. WT.	PART NO.
B	3/28/13	ADDED (2) 582, (1) 521, (1) 573, (1) 13291, (1) 11155, AND (2) 4721; REPLACED 594 W/ 596	JCB		852	2'	±1°					
A	11/29/11	RELEASED TO PRODUCTION	JAR		539							
												11812



THIRD ANGLE PROJECTION	FILENAME:
SYMBOLY PER ANSI Y14.5	NOTES:
DRAWN BY. JAR	
DRAWN/DATE 11/29/11	
APPVD/DATE	TITLE
	5/8" SQ. TORSION SPRING KIT (85 RAIL) 25/30

WOODBINE MFG. CO.
 BUS BROWN DRIVE
 WOODBINE, IOWA 51579
 712-647-2050
 The original TOMMY GATE hydraulic lift
 THE INFORMATION HERE IS CONFIDENTIAL AND MUST NOT BE USED IN ANYWAY DETRIMENTAL TO THE INTEREST OF WOODBINE MFG.