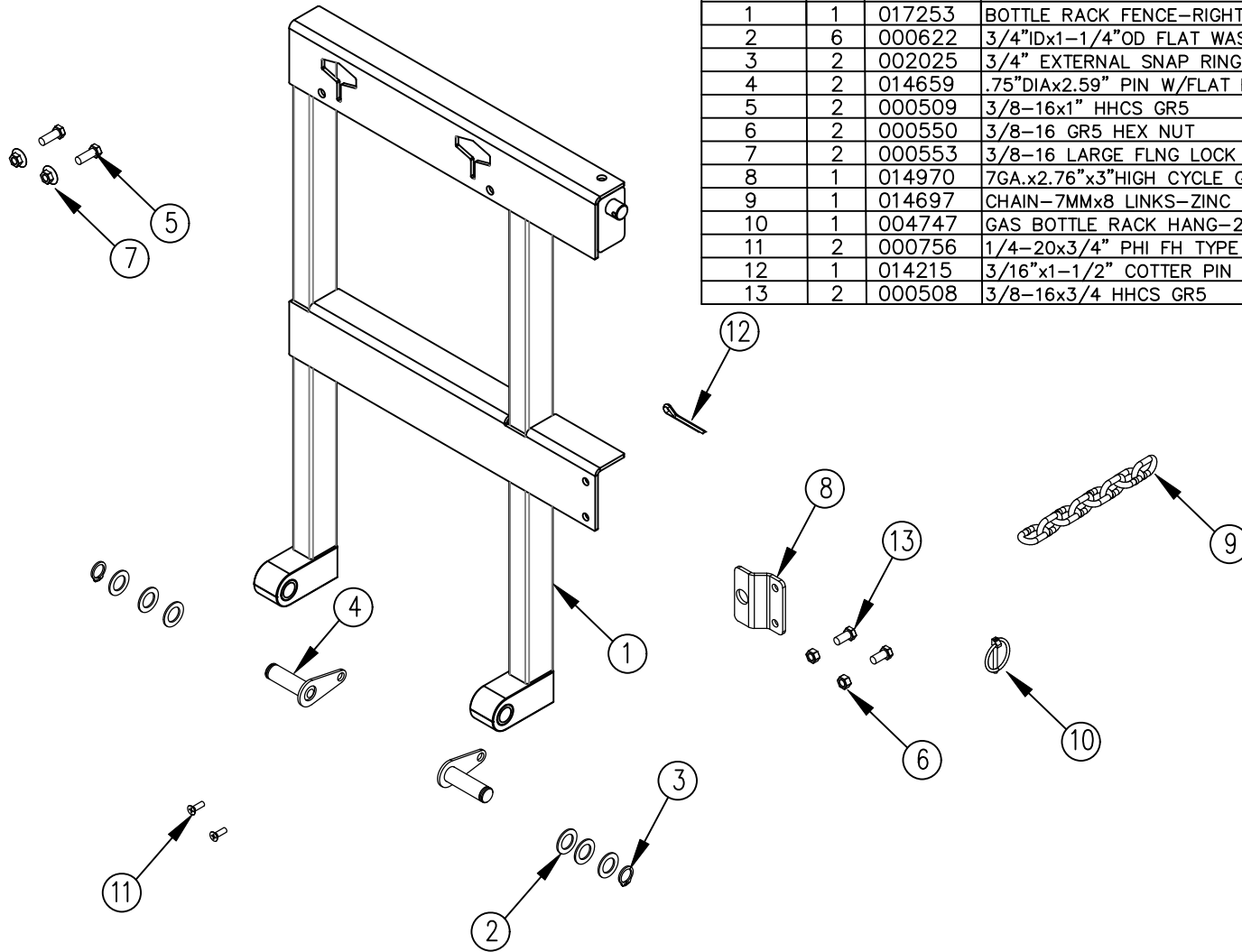


ITEM NO.	QTY.	PART NO.	DESCRIPTION
1	1	017253	BOTTLE RACK FENCE-RIGHT
2	6	000622	3/4"IDx1-1/4"OD FLAT WASHER (650) *ZP*
3	2	002025	3/4" EXTERNAL SNAP RING(G2)PLATED
4	2	014659	.75"DIAx2.59" PIN W/FLAT HEAD KEEPER
5	2	000509	3/8-16x1" HHCS GR5
6	2	000550	3/8-16 GR5 HEX NUT
7	2	000553	3/8-16 LARGE FLNG LOCK NUT
8	1	014970	7GA.x2.76"x3"HIGH CYCLE GBR FENCE STOP BRACKET
9	1	014697	CHAIN-7MMx8 LINKS-ZINC GBR FENCE CHAIN
10	1	004747	GAS BOTTLE RACK HANG-2 LYNCH PIN
11	2	000756	1/4-20x3/4" PHI FH TYPE F SS
12	1	014215	3/16"x1-1/2" COTTER PIN
13	2	000508	3/8-16x3/4 HHCS GR5



					THIRD ANGLE PROJECTION	DRAWN BY GDB	NOTES:	WOODBINE MFG. CO. BUS BROWN DRIVE WOODBINE, IOWA 51579
						DRAWN/DATE 5/28/21		
					UNLESS OTHERWISE SPECIFIED	APPVD/DATE -	TITLE REPLACEMENT BOTTLE RACK FENCE - R HC (42" PLATFORM)	 THE ORIGINAL TOMMY GATE EST. 1954
B	6/18/24	(2) 508 WERE (2) 509	MK	3011	DIMENSIONS ARE IN INCHES TOLERANCES: FRACTIONAL ±1/16 ANGULAR MACH ±1° BEND ±1°	DO NOT SCALE DRAWING		
A	5/28/21	RELEASED TO PRODUCTION	GDB	2620	TWO PLACE DECIMAL ±0.030 THREE PLACE DECIMAL ±0.010		SCALE	WEIGHT
REV.	DATE	CHANGE RECORD	BY	APPVD	ECN	THE INFORMATION HERE IS CONFIDENTIAL AND MUST NOT BE USED IN ANY WAY DETRIMENTAL TO THE INTEREST OF WOODBINE MFG.	1:8	-
							PART NO.	17482