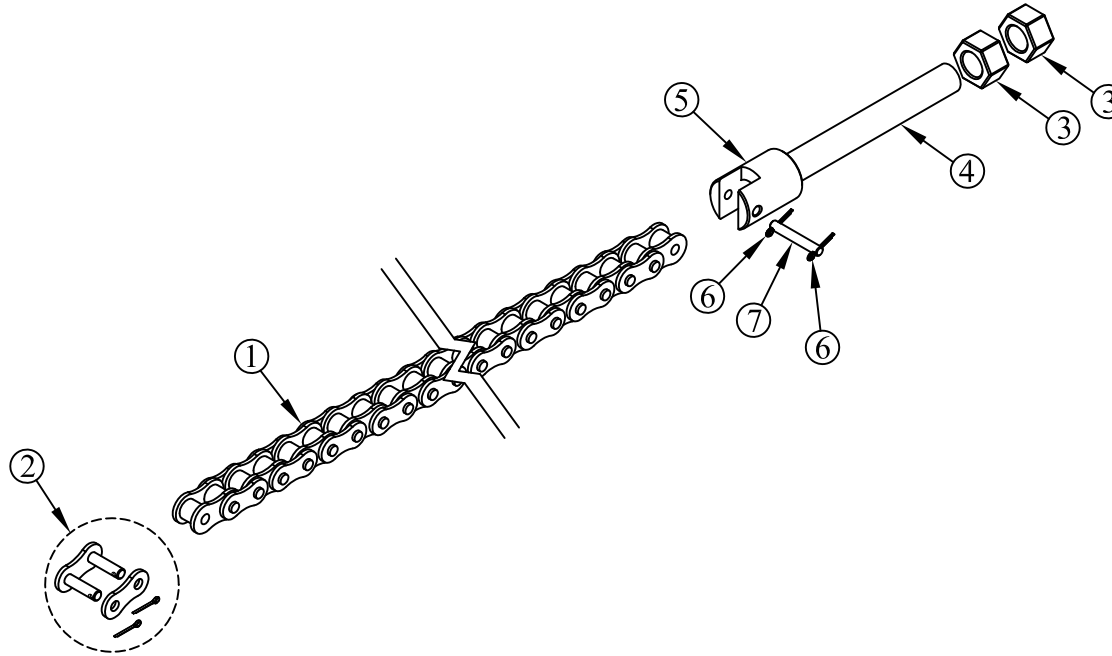


ITEM NO.	QTY.	PART NO.	DESCRIPTION
1	1	013629	303 PITCH ROLLER CHAIN(AB-PASS.SIDE) 89-36' BH W 20' GRD CLEAR
2	1	007661	50 SERIES CONNECTING LINK
3	2	000552	5/8-18 SAE HEX FIN NUT
4	1	007667	5/8"x5-3/4" CHAIN ADJUSTMENT BOLT
5	1	007666	1.12"DIA.x1.5" RAIL CHAIN TENSIONER
6	2	009967	1/16"x1/2" COTTER PIN
7	1	009867	0.200x1.344" HEAT CHAIN CLEVIS PIN
8	1	095041	ROLLER CHAIN REPLACEMENT GUIDE



						THIRD ANGLE PROJECTION			FILENAME:		WOODBINE MFG. CO. BUS BROWN DRIVE WOODBINE, IOWA 51579															
									SYMBOLY PER ANSI Y14.5		NOTES:															
						<table border="1"> <tr> <td>DECIMAL</td> <td>2PLC</td> <td>3PLC</td> </tr> <tr> <td>MACHINE SAW, DRILL</td> <td>.030</td> <td>.015</td> </tr> <tr> <td>SHEAR, PUNCH FORM</td> <td>.060</td> <td>.030</td> </tr> <tr> <td>TORCH, WELDING ROUGH CAST</td> <td>.090</td> <td>.060</td> </tr> </table>			DECIMAL	2PLC	3PLC	MACHINE SAW, DRILL	.030	.015	SHEAR, PUNCH FORM	.060	.030	TORCH, WELDING ROUGH CAST	.090	.060	DRAWN BY: JCB		712-647-2050			
DECIMAL	2PLC	3PLC																								
MACHINE SAW, DRILL	.030	.015																								
SHEAR, PUNCH FORM	.060	.030																								
TORCH, WELDING ROUGH CAST	.090	.060																								
									DRAWN/DATE 4/9/15		<small>THE INFORMATION HERE IS CONFIDENTIAL AND MUST NOT BE USED IN ANYWAY DETRIMENTAL TO THE INTEREST OF WOODBINE MFG.</small>															
									APPVD/DATE		TITLE 303 PITCH REPLACEMENT ROLLER CHAIN															
REV.	DATE	CHANGE RECORD				BY	APPVD	ECN	DRAFT 2'	ANGULAR ±1'	SALES CATEGORY	PRODUCT LINE	SCALE 1:4	FIN. WT.	PART NO. 14359											
A	4/9/15	RELEASED TO PRODUCTION				JCB		1366																		