

Lid Guard Installation Instructions

Installing the Lid Guards

- Position** the platform as required to install lid guards.
Use supports if working underneath the platform.
- Disconnect** the power cable from the positive side of the battery, or manually **Trip** the circuit breaker.
- Mark** the location of the lid guards for your platform (Figures 2-7).
Locate four on the main platform or two on each of the bi-fold platforms, and 2 on folding extension if equipped.
Avoid the hinge tube.

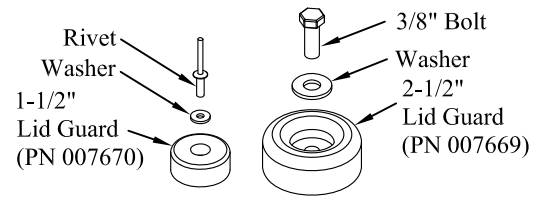
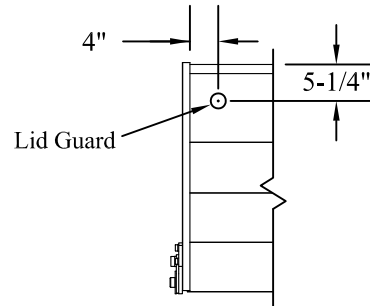


Figure 1: Lid guard assembly.

Note: If your platform has a dimension shown, that dimension must be maintained within 1/16" to miss the internal platform structure.

- Drill** a hole through one wall only at each marked location using:
5/16" drill bit for 2-1/2" lid guards.
3/16" drill bit for 1-1/2" lid guards.
- Tap** the 5/16" drilled holes with a 3/8"-16 UNC-2B tap for 2-1/2" lid guards.
- Attach** the lid guards to the platform (Figure 1).
- Close** and **Latch** the platform.
- Reconnect** power to the liftgate.

Rail Series
Aluminum Folding Extension



Note: Left side shown, right side is similar.

Figure 2: Rail Series folding extension lid guard location.

Rail Series: Bi-Fold Platforms

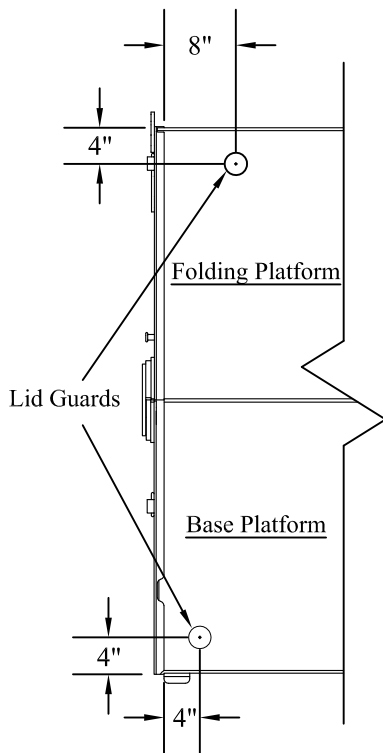
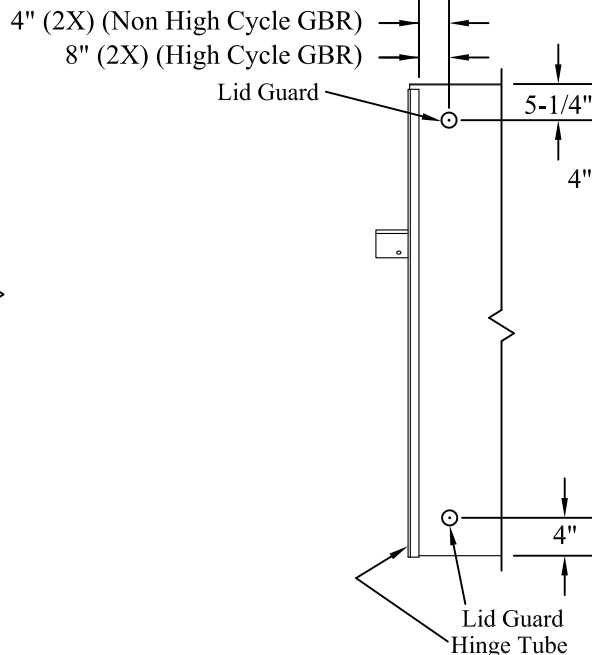
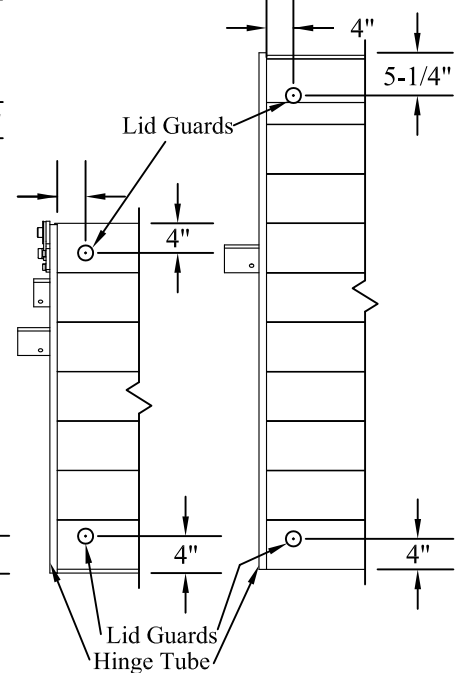


Figure 4: Bi-Fold platform lid guard location.

Rail Series
Steel Platform (Not Bi-Fold)



Rail Series
Aluminum Platforms

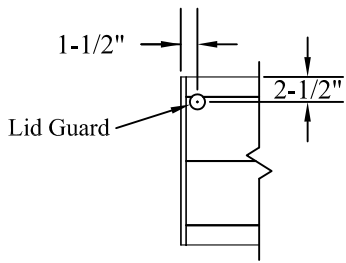


Note: Left side shown, right side is similar.

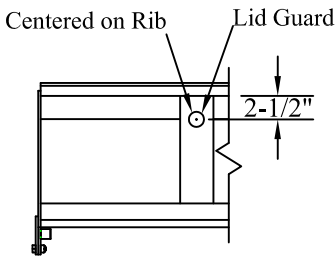
Figure 3: Railgate main platform lid guard location.

Lid Guard Installation Instructions

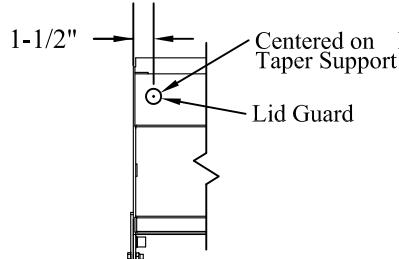
G² & Original Series Aluminum Folding Extension



Original Series Steel Folding Extension



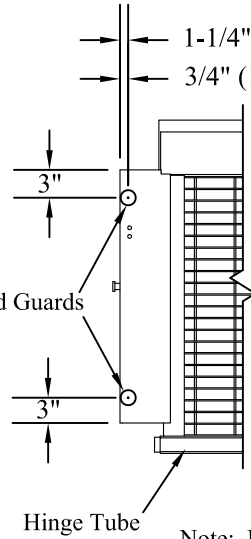
G² Series Steel Folding Extension



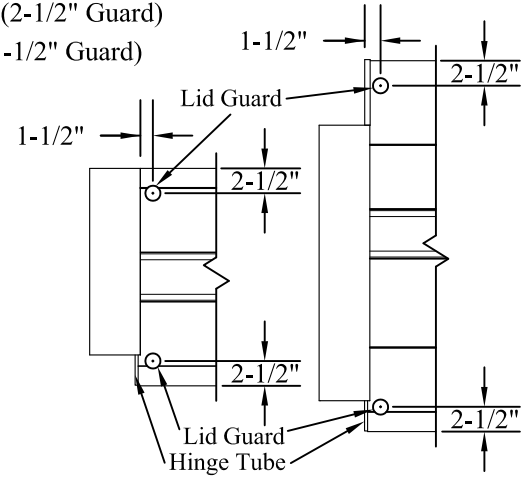
Note: Left side shown, right side is similar.

Figure 5: **G²** and Original Series folding extension lid guard location.

G² & Original Series Tommy Traction & Bar Grate Platforms



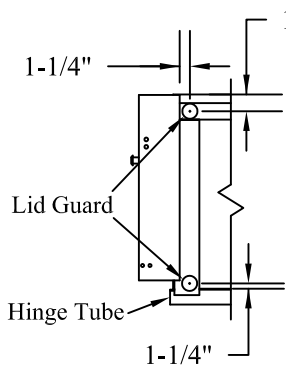
G² & Original Series Aluminum Platforms



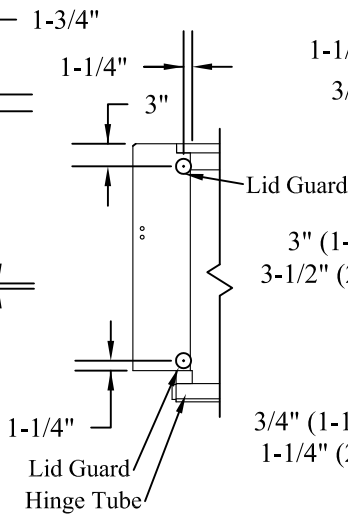
Note: Left side shown, right side is similar.

Figure 6: Bar Grate and Aluminum main platform lid guard location.

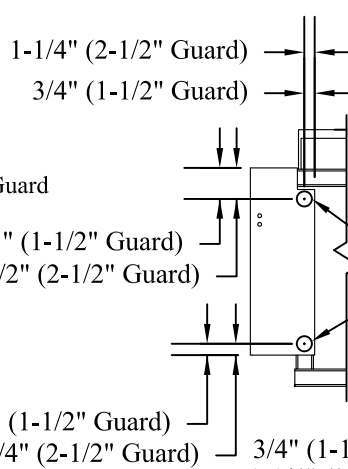
Original Series Steel Platform



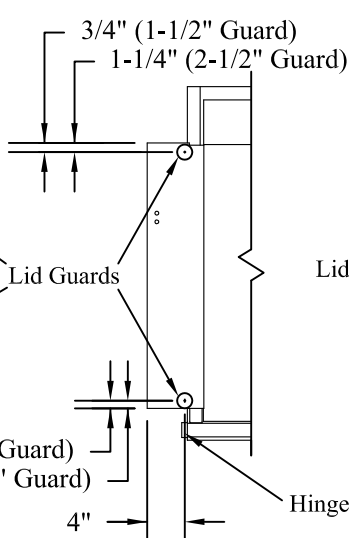
G² Series Steel Platform



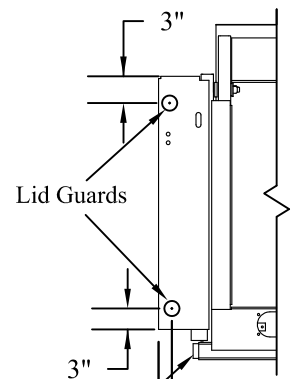
G² Series 42" Travel One-Piece Steel Platform



G² & Original Series 50" Travel One-Piece Steel Platforms



Lift N Dump Platform



Note: Left side shown, right side is similar.

Figure 7: **G²** and Original Series main platform lid guard location.