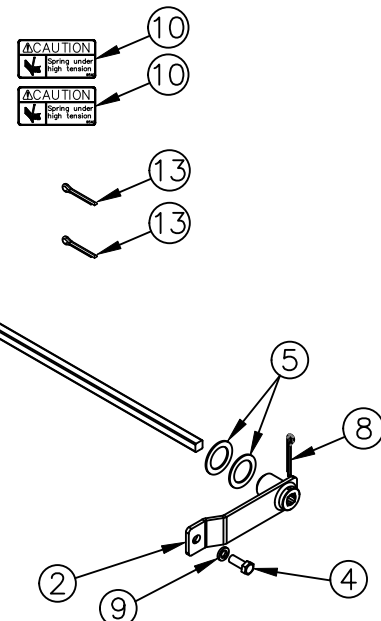
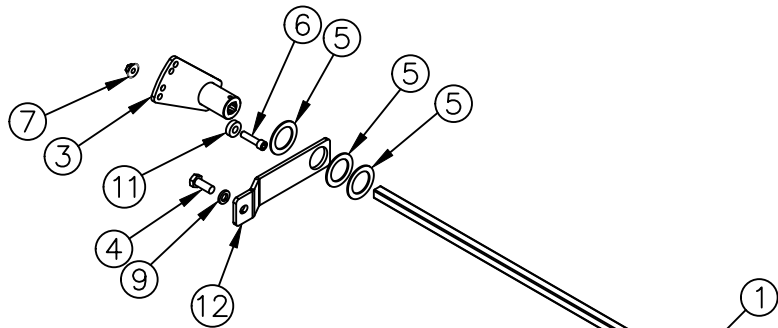


ITEM NO.	QTY.	PART NO.	DESCRIPTION
1	1	005237	5/8"SQ.X96-3/4" RAIL TORSION SPRING (95)
2	1	011157	TORSION ARM RAIL 5/8" SQ
3	1	017394	HCGBR 5/8" RAIL TORSION SPRING HOLDER (DR)
4	2	000521	1/2-13x1-1/4" HHCS GR5
5	5	000582	1-1/2" NARROW RIM MACHINE BUSHING
6	1	000596	3/8-16x1-1/2" USS SOC HD CAP
7	1	000553	3/8-16 LARGE FLANGE LOCK NUT
8	1	004720	1/4"x2" COTTER PIN
9	2	000573	1/2" SPRING LOCK WASHER
10	2	009540	CAUTION DECAL-TORSION SPRING
11	1	013291	5/16" TORSION SPRING SPACER
12	1	011155	TORSION ARM RAIL (DR)
13	2	004721	1/8"x3/4" COTTER PIN
14	1	095325	REPAIR RAIL TORSION ASSIST SPRING INSTRUCTIONS (HCGBR)



A	3/19/21	RELEASED TO PRODUCTION	GDB	2507	
REV.	DATE	CHANGE RECORD	BY	APPVD	ECN

THIRD ANGLE PROJECTION

UNLESS OTHERWISE SPECIFIED
DIMENSIONS ARE IN INCHES
TOLERANCES:
FRACTIONAL ±1/16
ANGULAR MACH ±1'
BEND ±1'
TWO PLACE DECIMAL ±0.030
THREE PLACE DECIMAL ±0.010

DRAWN BY
GDB

DRAWN/DATE
3/19/21

APPVD/DATE
-

DO NOT SCALE
DRAWING

NOTES:

TITLE
5/8" SQ. TORSION SPRING KIT
(95 HC GBR RAIL) 25/30

SCALE
1:12

WEIGHT
-

PART NO.
017405

WOODBINE MFG. CO.
BUS BROWN DRIVE
WOODBINE, IOWA 51579

THE INFORMATION HERE IS CONFIDENTIAL AND MUST NOT BE USED IN ANY WAY DETRIMENTAL TO THE INTEREST OF WOODBINE MFG.