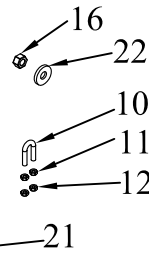

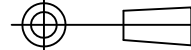


ITEM NO.	QTY.	PART NO.	DESCRIPTION
1	1	002081	LND PLATFORM COMPLETE(86)
2	2	006043	LND INSERT LATCH SPRING-2.50' LENGTH
3	4	000990	1/4-20 LINKAGE SHOULDER BOLT(LND)
4	1	006974	INSERT LINK SHORT COMPLETE(LND)
5	1	000991	5/16-18 INSERT LATCH PIVOT BOLT-LND
6	1	006831	INSERT HANDLE COMPLETE
7	1	006976	INSERT LINK LONG COMPLETE(86LND)
8	2	006059	12GA.x2.63'x5'ACCESS COVER(LND)
9	8	000620	1/4-20x1/2' PN HD TY F S(G2)
10	2	004727	3/8' U-BOLT(SHORT)x16x7/8x1-1/2
11	4	000550	3/8-16 GR5 HEX NUT
12	4	000605	3/8-16 USS CROWN LOCK NUT
13	1	007737	1/2'DIA.x1'COTTERLESS HITCH PIN
14	1	005044	1/2' TORSION SPRING(86)
15	2	000587	1/2-13x1' HHCS GR5
16	3	000588	1/2-13 CROWN LOCK NUT
17	1	007435	PASS SIDE SQ SPRING HOLDER(86-91)
18	1	007433	DRIVERS SIDE SQ. SPRING HOLDER
19	1	000573	1/2' SPRING LOCK WASHER
20	1	002388	INSERT LATCH DEADMAN (LND)
21	2	002371	10GA.x1.13'x1.63'TUBE CAP(BR)
22	2	000576	1/2' USS FLAT WASHER
23	1	004538	LANYARD FOR NEW LND-STAINLESS
24	1	000540	10-32X3/8' PH THRD CUTTER



REV.	DATE	CHANGE RECORD	BY	APPVD	ECN	DRAFT	ANGULAR	SALES CATEGORY	PRODUCT LINE	SCALE	FIN. WT.	PART NO.
D	4/30/12	ADDED (1) 4538 & (1) 540	JCB		654	2'	±1°			N		9553
C	10/27/10	REPLACED (2) 567 WITH (2) 576; REMOVED (1) 604; ADDED (1) 587	JCB		359							
B	12/16/09	REPLACED KITS WITH INDIVIDUAL PARTS; ADDED (1) 2388, (2) 2371, (2) 576, (2) 588	JCB		245							
A	12/13/05	DRAWN IN AUTOCAD	DJR	KGJ								
						THIRD ANGLE PROJECTION	FILENAME:		WOODBINE MFG. CO. BUS BROWN DRIVE WOODBINE, IOWA 51579 712-647-2050  THE INFORMATION HERE IS CONFIDENTIAL AND MUST NOT BE USED IN ANYWAY DETRIMENTAL TO THE INTEREST OF WOODBINE MFG.			
							SYMBOLY PER ANSI Y14.5					
						DECIMAL	2PLC	3PLC				
						MACHINE SAW, DRILL	.030	.015				
						SHEAR, PUNCH FORM	.060	.030	DRAWN BY: DJR		NOTES:	
						TORCH, WELDING ROUGH CAST	.090	.060	DRAWN/DATE: 12/13/05			
									APPVD/DATE		TITLE: 86 LND REPLACEMENT PLATFORM	
									SALES CATEGORY			