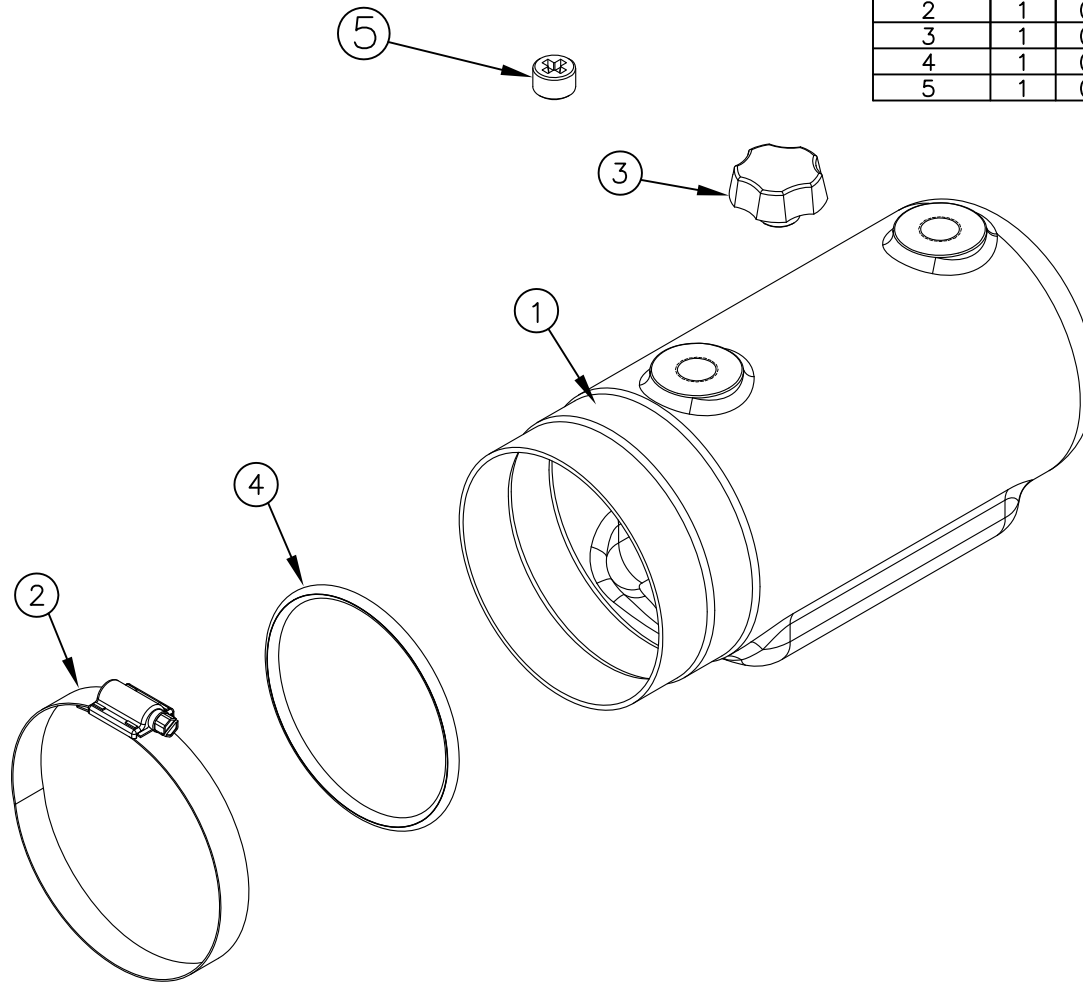

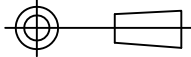


ITEM NO.	QTY.	PART NO.	DESCRIPTION
1	1	004318	MONARCH PLASTIC TANK (2QT)
2	1	004350	MONARCH CLAMP, HOSE, WORM GEAR, RS
3	1	010865	PLASTIC VENT PLUG (CANTILEVER)
4	1	004319	MONARCH 4-1/4" TANK O-RING
5	1	004403	VENT PLUG



REV.	DATE	CHANGE RECORD	BY	APPVD	ECN	THIRD ANGLE PROJECTION	FILENAME:	NOTES:		WOODBINE MFG. CO. BUS BROWN DRIVE WOODBINE, IOWA 51579  THE INFORMATION HERE IS CONFIDENTIAL AND MUST NOT BE USED IN ANYWAY DETRIMENTAL TO THE INTEREST OF WOODBINE MFG.		
						 DECIMAL 2PLC 3PLC MACHINE SAW, DRILL .030 .015 SHEAR, PUNCH, FORM .060 .030 TORCH, WELDING, ROUGH CAST .090 .060	SYMBOLY PER ANSI Y14.5 DRAWN BY: JCB DRAWN/DATE: 7/26/11 APPVD/DATE:					
B	11/22/16	ADDED (1) 4403	AAS		1745							
A	7/26/11	RELEASED TO PRODUCTION	JCB		450			TITLE: REPLACEMENT 2QT MONARCH PLASTIC TANK (CANTILEVER)				
						DRAFT 2"	ANGULAR ±1"	SALES CATEGORY	PRODUCT LINE	SCALE 1:3	FIN. WT.	PART NO. 11277