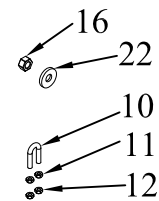


ITEM NO.	QTY.	PART NO.	DESCRIPTION
1	1	010139	PLATFORM COMPLETE (92LND) G2-50
2	2	006043	LND INSERT LATCH SPRING-2.50" LENGTH
3	4	000990	1/4-20 LINKAGE SHOULDER BOLT(LND)
4	1	006974	INSERT LINK SHORT COMPLETE(LND)
5	1	000991	5/16-18 INSERT LATCH PIVOT BOLT-LND
6	1	006831	INSERT HANDLE COMPLETE
7	1	006975	INSERT LINK LONG COMPLETE(91LND)
8	2	006059	12GA.x2.63"x5"ACCESS COVER(LND)
9	8	000620	1/4-20x1/2" PN HD TY F S(G2)
10	2	004727	3/8" U-BOLT(SHORT)x16x7/8x1-1/2
11	4	000550	3/8-16 GR5 HEX NUT
12	4	000605	3/8-16 USS CROWN LOCK NUT
13	1	007737	1/2"DIA.x1"COTTERLESS HITCH PIN
14	1	005045	1/2" TORSION SPRING(91)
15	2	000587	1/2-13x1" HHCS GR5
16	3	000588	1/2-13 CROWN LOCK NUT
17	1	007435	PASS SIDE SQ SPRING HOLDER(86-91)
18	1	007433	DRIVERS SIDE SQ. SPRING HOLDER
19	1	000573	1/2" SPRING LOCK WASHER
20	1	002388	INSERT LATCH DEADMAN (LND)
21	2	002371	10GA.x1.13"x1.63" TUBE CAP(BR)
22	2	000576	1/2" USS FLAT WASHER
23	1	004538	LANYARD FOR NEW LND-STAINLESS
24	1	000540	10-32X3/8" PH THRD CUTTER
25	1	009140	LND LATCH/UNLATCH POLYCRBNATE DECAL
26	1	009451	DECAL SHEET - LND CAUTION/WARNING
27	1	009513	DECAL SHEET - CABLE/G2 W/WEIGHT CAP

NOTE: APPLY DECALS FROM 9451 AND 9513 SAME AS PRODUCTION



REV.	DATE	CHANGE RECORD	BY	APPVD	ECN	DRAFT 2"	ANGULAR ±1"	SALES CATEGORY	PRODUCT LINE	SCALE N	FIN. WT.	PART NO. 10455
D	11/18/16	ADDED (1) 9140, (1) 9513, (1) 9451	AAS		1742							
C	1/12/11	ADDED (1) 4538 & (1) 540	JAR		398							
B	10/27/10	REPLACED (2) 567 WITH (2) 576; REMOVED (1) 604; ADDED (1) 587	JCB		359							
A	1/22/10	DRAWN IN AUTOCAD	JCB		259							
						THIRD ANGLE PROJECTION 		FILENAME: SYMBOLOGY PER ANSI Y14.5		NOTES: _____ _____ _____		
						DECIMAL 2PLC 3PLC MACHINE SAW, DRILL .030 .015		DRAWN BY: JCB				
						SHEAR, PUNCH FORM .060 .030		DRAWN/DATE 1/22/10		THE INFORMATION HERE IS CONFIDENTIAL AND MUST NOT BE USED IN ANYWAY DETRIMENTAL TO THE INTEREST OF WOODBINE MFG.		
						TORCH, WELDING ROUGH CAST .090 .060		APPVD/DATE _____				

WOODBINE MFG. CO.
 BUS BROWN DRIVE
 WOODBINE, IOWA 51579

