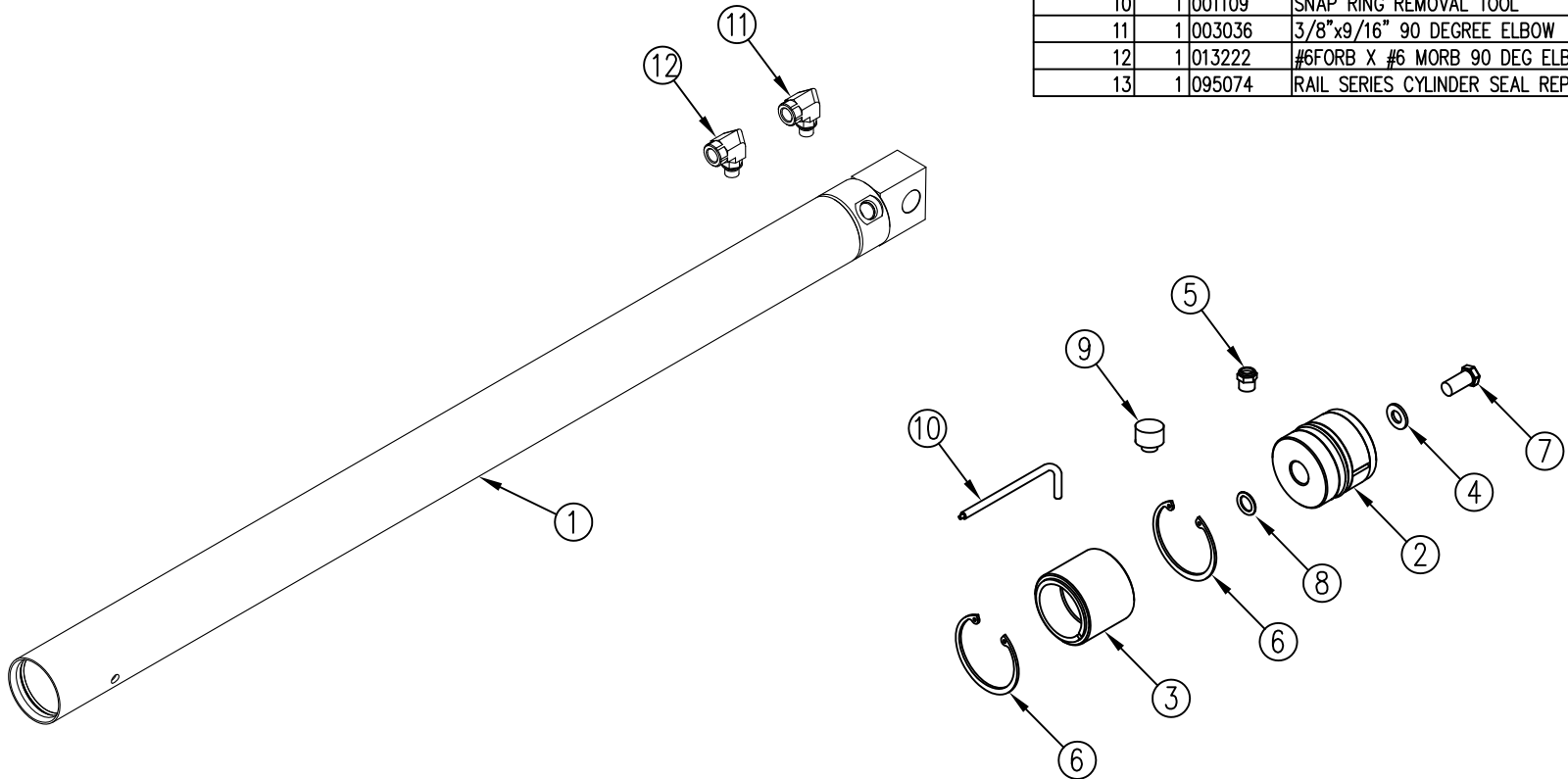
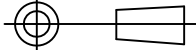


ITEM NO.	QTY.	PART NO.	DESCRIPTION
1	1	003267	2"x35" NEW CYL TUBE W/WELD ON (RG)
2	1	007444	1.980" PISTON W/ U-CUP & WEAR RING(RAIL)
3	1	007446	RAIL GUIDE BUSHING W/ WEAR RING & WIPER
4	1	000599	5/16 SAE THRU HARD WASHER
5	1	000600	VENT PLUG (RAIL TWIN CYL)
6	2	004546	2" INTERNAL SNAP RING (3000-X200)
7	1	000586	5/16-18X3/4" HHCS GR5
8	1	004556	5/8 O-RING 2-111
9	1	001108	CYLINDER PORT ASSEMBLY PLUG(RAIL)
10	1	001109	SNAP RING REMOVAL TOOL
11	1	003036	3/8"x9/16" 90 DEGREE ELBOW
12	1	013222	#6FORB X #6 MORB 90 DEG ELBOW (SAE 68150606FRG)
13	1	095074	RAIL SERIES CYLINDER SEAL REPLACEMENT INSTRUCTIONS



REV.	DATE	CHANGE RECORD	BY	APPVD	ECN	DRAFT	ANGULAR	SALES CATEGORY	PRODUCT LINE	SCALE	FIN. WT.	PART NO.
						2*	±1*			1:6		3257
C	11/13/13	003036 WAS 003035, ADDED (1) 013222	GDB		1004							
B	1/13/11	ADDED (1) 3035 AND (1) 95074; REPLACED 1110 WITH INDIVIDUAL PARTS	JCB		404							

THIRD ANGLE PROJECTION



DECIMAL 2PLC 3PLC

MACHINE SAW, DRILL .030 .015

SHEAR, PUNCH FORM .060 .030

TORCH, WELDING ROUGH CAST .090 .060

FILENAME:

SYMBOLGY PER ANSI Y14.5

DRAWN BY. DJR

DRAWN/DATE 7/14/03

APPVD/DATE

SALES CATEGORY

WOODBINE MFG. CO.
BUS BROWN DRIVE
WOODBINE, IOWA 51579

712-647-2050



THE INFORMATION HERE IS CONFIDENTIAL AND MUST NOT BE USED IN ANYWAY DETRIMENTAL TO THE INTEREST OF WOODBINE MFG.

NOTES:

TITLE 2"x35" REPLACEMENT CYL BARREL(RAIL NEW STYLE)