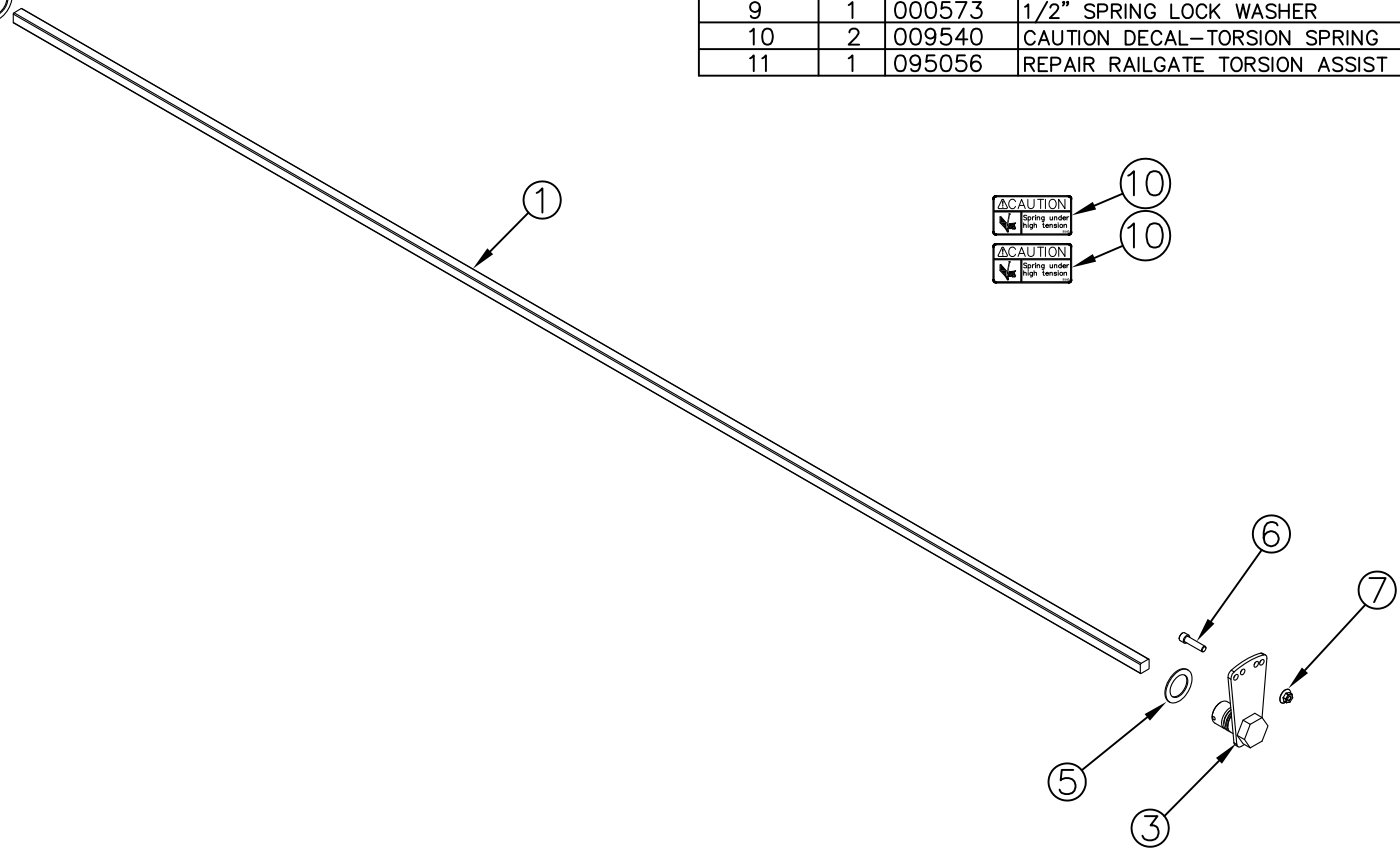



ITEM NO.	QTY.	PART NO.	DESCRIPTION
1	1	005239	3/4"SQ.X96-3/4" RAIL TORSION SPRING(95)
2	1	012675	TORSION ARM RAIL (DR) 3/4 SQ ZINC PLATED
3	1	007394	3/4" RAIL TORSION SPRING HOLDER(PAS) ZINC
4	1	000521	1/2-13x1-1/4" HHCS GR5
5	3	000582	1-1/2" NARROW RIM MACHINE BUSHING
6	1	000596	3/8-16x1-1/2"USS SOC HD CAP
7	1	000553	3/8-16 LARGE FLANGE LOCK NUT
8	1	004720	1/4"x2" COTTER PIN
9	1	000573	1/2" SPRING LOCK WASHER
10	2	009540	CAUTION DECAL-TORSION SPRING
11	1	095056	REPAIR RAILGATE TORSION ASSIST SPRING INSTRUCTIONS



REV.	DATE	CHANGE RECORD	BY	APPVD	ECN	THIRD ANGLE PROJECTION			FILENAME:		WOODBINE MFG. CO. BUS BROWN DRIVE WOODBINE, IOWA 51579	
						DECIMAL	2PLC	3PLC	SYMBOLY PER ANSI Y14.5	NOTES:		
C	1/15/13	REPLACED 7266 WITH 12675, ADDED (1) 582	GDB		820	MACHINE SAW,DRILL	.030	.015	DRAWN BY. JCB		712-647-2050 	
B	2/19/10	REPLACED 736 WITH 521, ADDED (1) 573, (2) 9540, AND (1) 95056	JCB		256	SHEAR, PUNCH FORM	.060	.030	DRAWN/DATE 10/5/07			THE INFORMATION HERE IS CONFIDENTIAL AND MUST NOT BE USED IN ANYWAY DETRIMENTAL TO THE INTEREST OF WOODBINE MFG.
A	10/5/07	DRAWN IN AUTOCAD	JCB	KGJ		TORCH, WELDING ROUGH CAST	.090	.060	APPVD/DATE	TITLE 3/4"SQ. TORSION SPRING KIT (A95 RAIL)		
						DRAFT 2"	ANGULAR ±1"	SALES CATEGORY	PRODUCT LINE	SCALE 1:12	FIN. WT. 19.83	PART NO. 2899