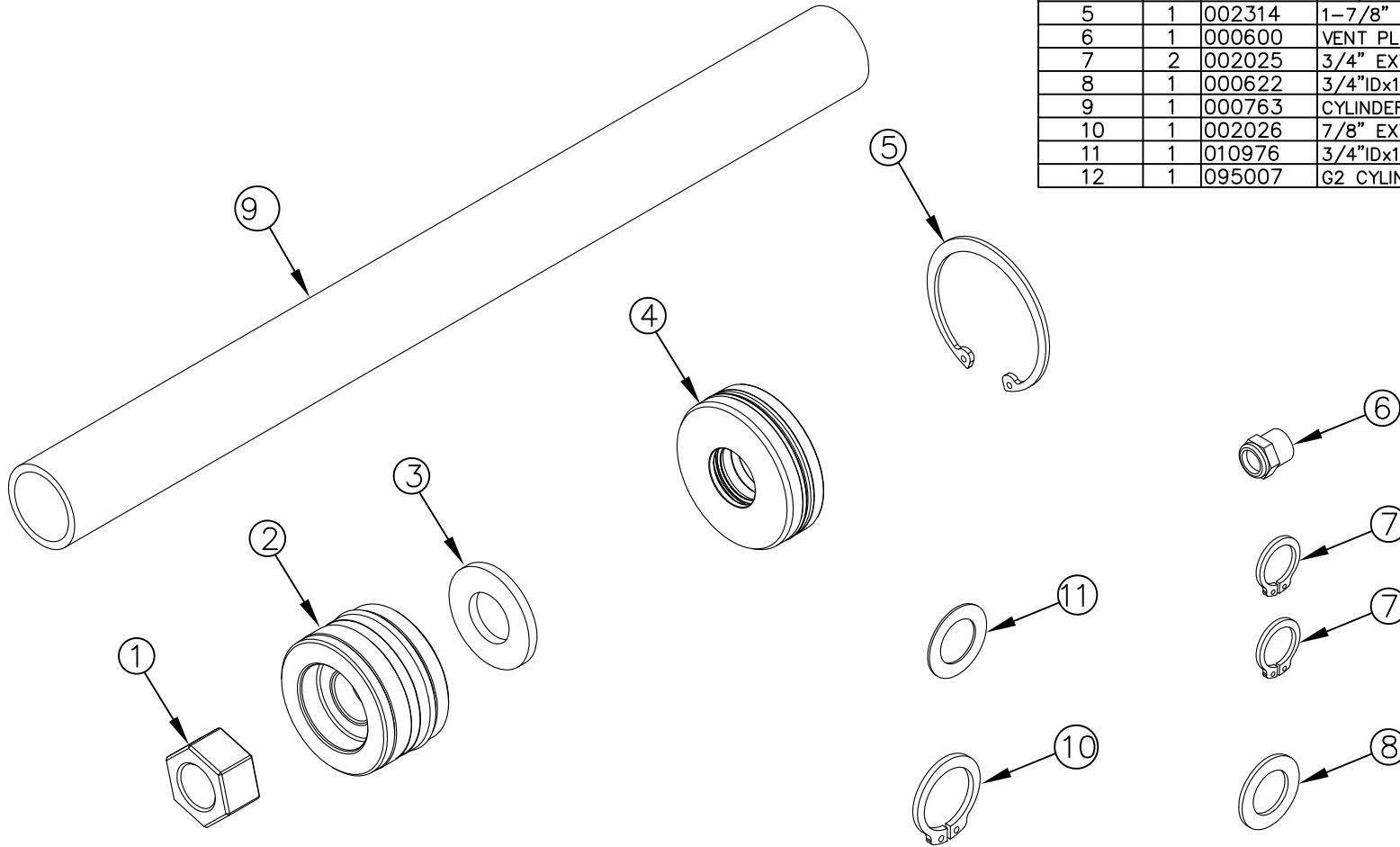



ITEM NO.	QTY.	PART NO.	DESCRIPTION
1	1	000552	5/8-18 UNF NUT
2	1	007428	PISTON W/O-RINGS (G2)
3	1	000577	5/8" SAE FLAT WASHER
4	1	003126	1-7/8" GUIDE BUSHING w/O-RINGS (G2)
5	1	002314	1-7/8" INTERNAL SNAP RING
6	1	000600	VENT PLUG - CYLINDER (RAIL)
7	2	002025	3/4" EXTERNAL SNAP RING (G2) PLATED
8	1	000622	3/4"IDx1-1/4"O.D. FLAT WASHER
9	1	000763	CYLINDER SHAFT PROTECTIVE SLEEVE
10	1	002026	7/8" EXTERNAL SNAP RING
11	1	010976	3/4"IDx1-1/4"O.D. THIN FLAT WASHER
12	1	095007	G2 CYLINDER REPAIR/REPLACE INSTRUCTIONS



NOTE: ACCOUNTING DO NOT INCLUDE 763 IN BOM

REV.	DATE	CHANGE RECORD	BY	APPVD	ECN	DRAFT 2'	ANGULAR ±1'	SALES CATEGORY	PRODUCT LINE	SCALE 1:2	FIN. WT. 0.649	PART NO. 1138				
D	4/11/16	REMOVED 9472	AAS		1614	THIRD ANGLE PROJECTION		FILENAME:	WOODBINE MFG. CO. BUS BROWN DRIVE WOODBINE, IOWA 51579  THE INFORMATION HERE IS CONFIDENTIAL AND MUST NOT BE USED IN ANYWAY DETRIMENTAL TO THE INTEREST OF WOODBINE MFG.							
C.1	9/3/14	ADDED NOTE	GDB			DECIMAL	2PLC	3PLC					SYMBOLY PER ANSI Y14.5	NOTES:		
C	12/21/10	ADDED (1) 2026 AND (1) 10976	JCB		381	MACHINE SAW, DRILL	.030	.015					DRAWN BY. JCB			
B	10/7/09	ADDED (1) 763	JCB	JCB	126	SHEAR, PUNCH FORM	.060	.030					DRAWN/DATE 11/18/08			
A	11/18/08	DRAWN IN AUTOCAD	JCB	JCB		TORCH, WELDING ROUGH CAST	.090	.060					APPVD/DATE	TITLE G2 CYLINDER REPAIR KIT		