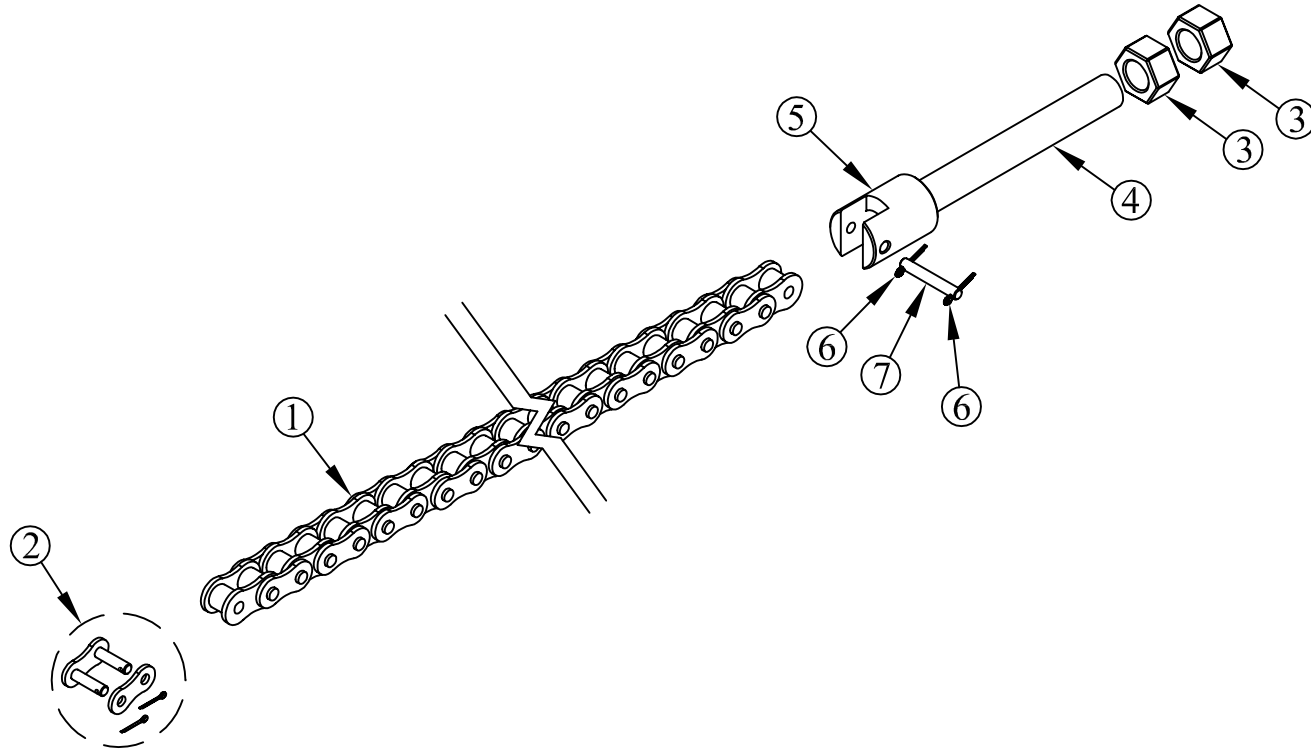


ITEM NO.	QTY.	PART NO.	DESCRIPTION
1	1	012586	295 PITCH ROLLER CHAIN(AB-PAS.SIDE)89(TX)
2	1	007661	50 SERIES CONNECTING LINK
3	2	000552	5/8-18 SAE HEX FIN NUT
4	1	007667	5/8"x5-3/4" CHAIN ADJUSTMENT BOLT
5	1	007666	1.12"DIA.x1.5" RAIL CHAIN TENSIONER
6	2	009967	1/16"x1/2" COTTER PIN
7	1	009867	0.200x1.344" HEAT CHAIN CLEVIS PIN
8	1	095041	ROLLER CHAIN REPLACEMENT GUIDE



						THIRD ANGLE PROJECTION	FILENAME:	WOODBINE MFG. CO. BUS BROWN DRIVE WOODBINE, IOWA 51579				
							SYMBOLGY PER ANSI Y14.5	NOTES:				
						DECIMAL MACHINE SAW,DRILL	2PLC .030	3PLC .015	DRAWN BY: GDB			
						SHEAR, PUNCH FORM	.060	.030	DRAWN/DATE 2/20/14			
						TORCH, WELDING ROUGH CAST	.090	.060	APPVD/DATE			
A	2/20/14	RELEASED TO PRODUCTION			GDB	1044	TITLE 295 PITCH REPLACEMENT ROLLER CHAIN ABOVE BED PAS. SIDE(TX)		712-647-2050			
REV.	DATE	CHANGE RECORD			BY	APPVD	ECN	DRAFT 2"	ANGULAR ±1"			
								SALES CATEGORY	PRODUCT LINE	SCALE N	FIN. WT.	PART NO. 013562



THE INFORMATION HERE IS CONFIDENTIAL AND MUST NOT BE USED IN ANYWAY DETRIMENTAL TO THE INTEREST OF WOODBINE MFG.