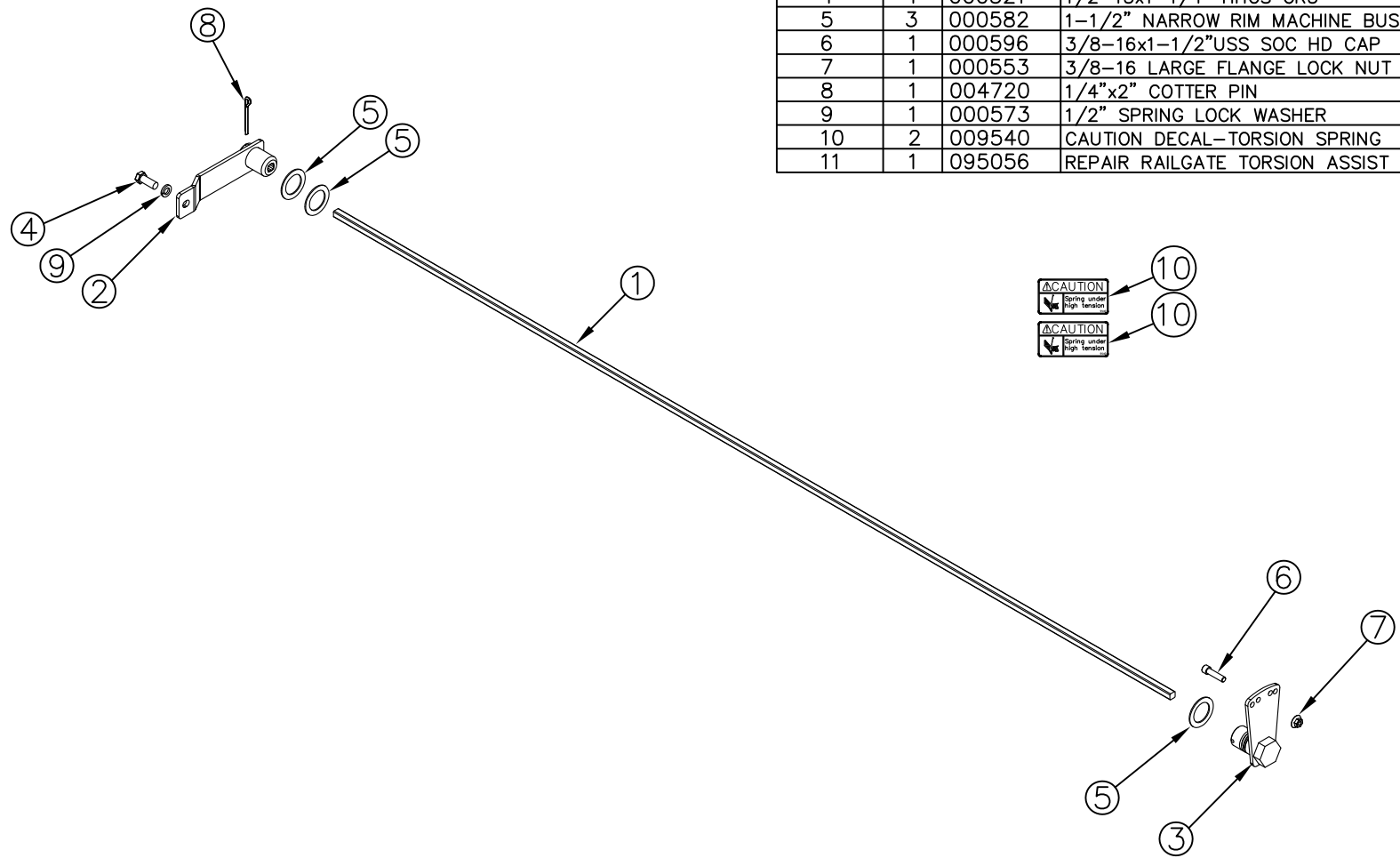


ITEM NO.	QTY.	PART NO.	DESCRIPTION
1	1	005234	1/2"SQ.X80-3/4" RAIL TORSION SPRING(79)
2	1	012674	TORSION ARM RAIL (DR) 1/2 SQ ZINC PLATED
3	1	007265	1/2" RAIL TORSION SPRING HOLDER(PAS) ZINC
4	1	000521	1/2-13x1-1/4" HHCS GR5
5	3	000582	1-1/2" NARROW RIM MACHINE BUSHING
6	1	000596	3/8-16x1-1/2"USS SOC HD CAP
7	1	000553	3/8-16 LARGE FLANGE LOCK NUT
8	1	004720	1/4"x2" COTTER PIN
9	1	000573	1/2" SPRING LOCK WASHER
10	2	009540	CAUTION DECAL-TORSION SPRING
11	1	095056	REPAIR RAILGATE TORSION ASSIST SPRING INSTRUCTIONS



				THIRD ANGLE PROJECTION			FILENAME:		WOODBINE MFG. CO. BUS BROWN DRIVE WOODBINE, IOWA 51579																	
							SYMBOLY PER ANSI Y14.5																			
				<table border="1"> <tr> <th>DECIMAL</th> <th>2PLC</th> <th>3PLC</th> </tr> <tr> <td>MACHINE SAW,DRILL</td> <td>.030</td> <td>.015</td> </tr> <tr> <td>SHEAR, PUNCH FORM</td> <td>.060</td> <td>.030</td> </tr> <tr> <td>TORCH, WELDING ROUGH CAST</td> <td>.090</td> <td>.060</td> </tr> </table>			DECIMAL	2PLC	3PLC	MACHINE SAW,DRILL	.030	.015	SHEAR, PUNCH FORM	.060	.030	TORCH, WELDING ROUGH CAST	.090	.060	DRAWN BY: JCB		NOTES:		712-647-2050			
DECIMAL	2PLC	3PLC																								
MACHINE SAW,DRILL	.030	.015																								
SHEAR, PUNCH FORM	.060	.030																								
TORCH, WELDING ROUGH CAST	.090	.060																								
C 1/15/13 REPLACED 7264 WITH 12674, ADDED (1) 582 GDB 820				DRAWN/DATE 10/5/07				<small>THE INFORMATION HERE IS CONFIDENTIAL AND MUST NOT BE USED IN ANYWAY DETRIMENTAL TO THE INTEREST OF WOODBINE MFG.</small>																		
B 2/19/10 REPLACED 736 WITH 521, ADDED (1) 573, (2) 9540, AND (1) 95056 JCB 256				APPVD/DATE		TITLE 1/2"SQ. TORSION SPRING KIT (A79 RAIL)																				
A 10/5/07 DRAWN IN AUTOCAD JCB KGJ				SALES CATEGORY		PRODUCT LINE		SCALE 1:12		FIN. WT. 10.63		PART NO. 2889														
REV.	DATE	CHANGE RECORD			BY	APPVD	ECN	DRAFT 2"	ANGULAR ±1"																	