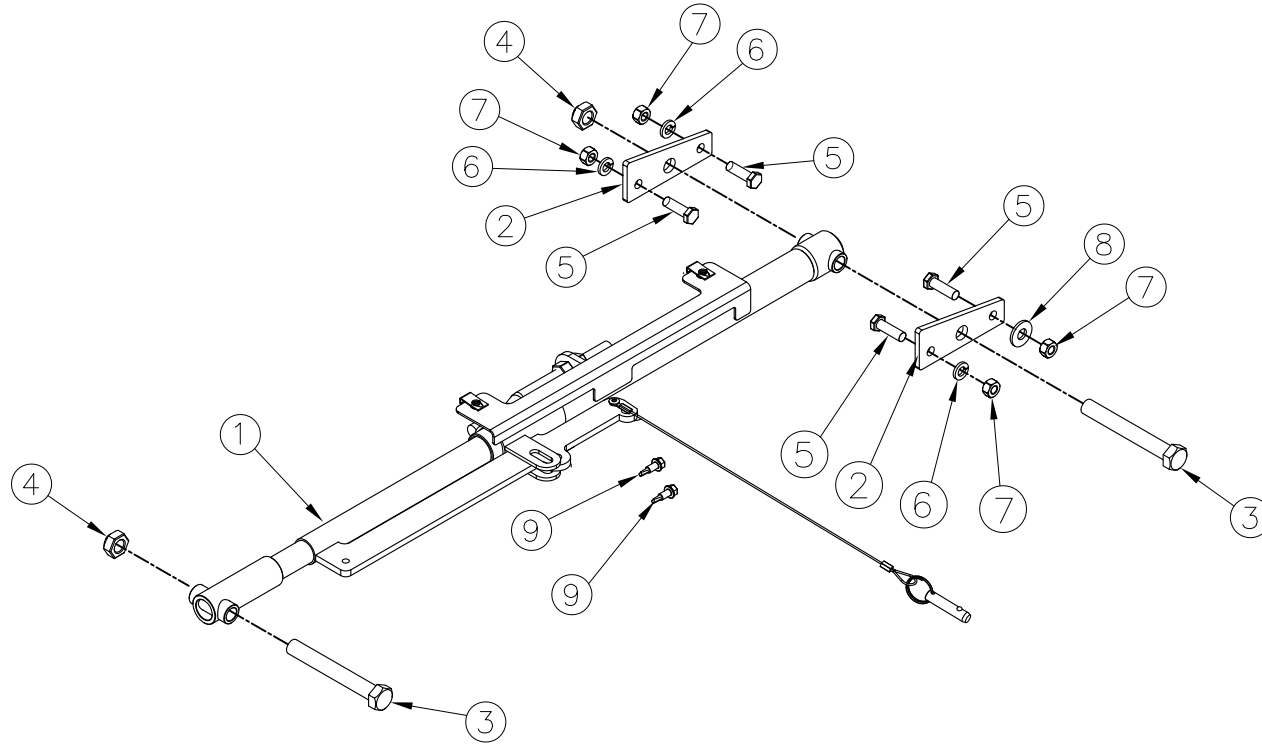



ITEM NO.	QTY.	PART NO.	DESCRIPTION
1	1	010630	CANTILEVER PLATFORM SUPPORT ARM (PASSENGER)
2	2	010027	PLATFORM PLATE
3	2	010494	1/2"-13 X 3-3/4" HHCS GR 8, PLATED
4	2	000588	1/2"-13 CROWN LOCK NUT
5	4	010502	5/16"-18 X 1" HHCS, GR 5, ZP
6	3	000584	5/16" SPRING LOCK WASHER, ZP
7	4	000554	5/16"-18 HEX NUT, ZP
8	1	000574	5/16"-18 USS FLAT WASHER
9	2	013180	#12-3/4" HEX HEAD SELF-DRILLING SCREW



REV.	DATE	CHANGE RECORD	BY	APPVD	ECN	THIRD ANGLE PROJECTION			FILENAME:		NOTES:	WOODBINE MFG. CO. BUS BROWN DRIVE WOODBINE, IOWA 51579	
						DECIMAL	2PLC	3PLC	SYMBOLY PER ANSI Y14.5	SYMBOLY PER ANSI Y14.5			
B	3/30/15	ADDED (2) 013180 UPDATED GRAPHIC FOR 010630	AAS		1357	MACHINE SAW, DRILL	.030	.015	DRAWN BY: JCB			712-647-2050	
A	7/5/11	RELEASED TO PRODUCTION	JCB		450	SHEAR, PUNCH FORM	.060	.030	DRAWN/DATE 7/5/11				
						TORCH, WELDING ROUGH CAST	.090	.060	APPVD/DATE	TITLE REPL. CANTILEVER PLATFORM SUPPORT ARM (PASSENGER)			
						DRAFT 2'		ANGULAR ±1'	SALES CATEGORY	PRODUCT LINE	SCALE 1:6	FIN. WT.	PART NO. 11259

THE INFORMATION HERE IS CONFIDENTIAL AND MUST NOT BE USED IN ANYWAY DETRIMENTAL TO THE INTEREST OF WOODBINE MFG.