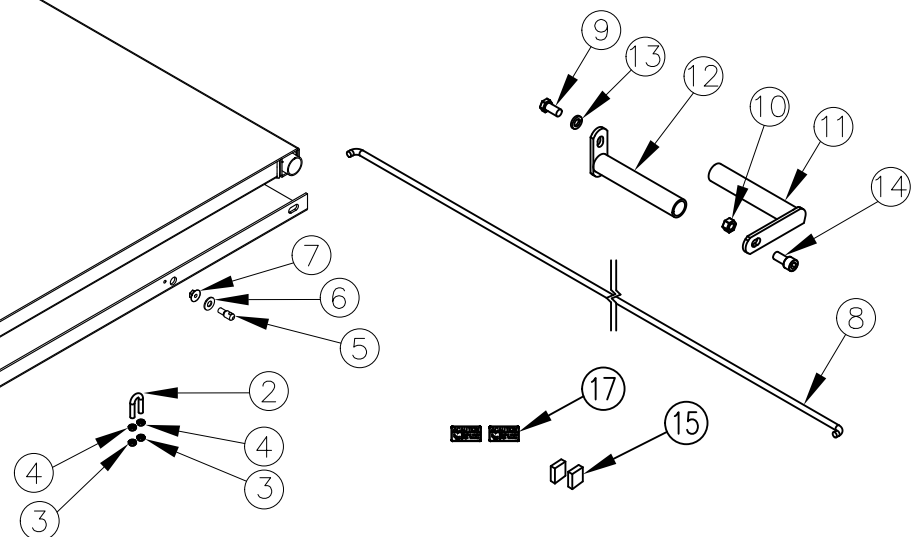


ITEM NO.	QTY.	PART NO.	DESCRIPTION
1	1	2587	G2 65-50 41+6" TP PLATFORM COMPLETE
2	2	4727	3/8"U-BOLT(SHORT)x16x7/8x1-1/2
3	4	605	3/8-16 USS CROWN LOCK NUT
4	4	550	3/8-16 GR5 HEX NUT
5	2	4714	PLATFORM LATCH PIN (G2)
6	2	624	5/16" USS THRU HARD WASHER
7	2	553	3/8" CROWN LOCK NUT
8	1	7870	.38"x64.313" TORSION SPRING(64EA)
9	1	587	1/2-13x1" HHCS GR5
10	1	588	1/2-13 CROWN LOCK NUT
11	1	7431	PASS SIDE SPRING HOLDER(62 DEG)
12	1	7778	HINGE TUBE SPRING HOLDER-EA DRIVER
13	1	573	1/2" SPRING LOCKWASHER
14	1	604	1/2-13x1"USS SOC HD CAP STAINLESS
15	2	13461	.50"SQ.x.341" BAR-SPRING SPACER
16	1	95136	(C)(G)TS SPACER INSTALLATION GUIDE (65)
17	2	9540*	WARNING DECAL - SPRING TENSION
18	1	9513	DECAL SHEET-CABLE/G2 W/WEIGHT CAP. (NOT SHOWN)
19	1	95064	PLATFORM AND/OR TORSION SPRING (CABLE/G2) INSTR.

*DO NOT INCLUDE IN ACCOUNTING BOM



NOTES: APPLY DECALS FROM 9513 SHEET SAME AS PRODUCTION
SEND (2) 9540 LOOSE

						THIRD ANGLE PROJECTION		FILENAME:		WOODBINE MFG. CO. BUS BROWN DRIVE WOODBINE, IOWA 51579			
								SYMBOLY PER ANSI Y14.5		NOTES:			
						DECIMAL	2PLC	3PLC					
						MACHINE SAW, DRILL	.030	.015	DRAWN BY: JCB	712-647-2050			
						SHEAR, PUNCH FORM	.060	.030	DRAWN/DATE 12/8/09				
B	8/7/14	ADDED (2) 13461, (1) 95136, (1) 9513, AND (1) 95064	GDB		1180	TORCH, WELDING ROUGH CAST	.090	.060	APPVD/DATE	THE INFORMATION HERE IS CONFIDENTIAL AND MUST NOT BE USED IN ANYWAY DETRIMENTAL TO THE INTEREST OF WOODBINE MFG.			
A	12/8/09	DRAWN IN AUTOCAD	JCB		242	DRAFT 2"	ANGULAR ±1"		Sales Category				
REV.	DATE	CHANGE RECORD	BY	APPVD	ECN					PRODUCT LINE	SCALE 1:14	FIN. WT.	PART NO. 10281