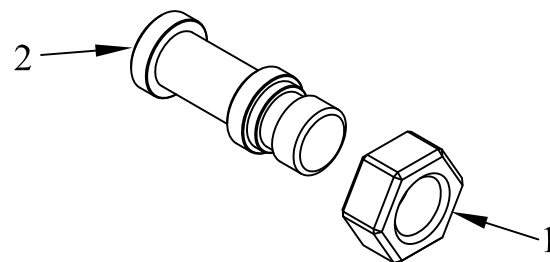


ITEM NO.	QTY.	PART NO.	DESCRIPTION
1	1	7022	DROP AWAY PIN (G2)
2	1	558	3/8-16 NYLON JAM LOCK NUT



REV.	DATE	CHANGE RECORD	BY	APPVD	ECN	THIRD ANGLE PROJECTION	FILENAME:	SYMBOLY PER ANSI Y14.5	NOTES:	WOODBINE MFG. CO. BUS BROWN DRIVE WOODBINE, IOWA 51579																		
										712-647-2050																		
						<table border="1"> <thead> <tr> <th>DECIMAL</th> <th>2PLC</th> <th>3PLC</th> </tr> </thead> <tbody> <tr> <td>MACHINE SAW, DRILL</td> <td>.030</td> <td>.015</td> </tr> <tr> <td>SHEAR, PUNCH FORM</td> <td>.060</td> <td>.030</td> </tr> <tr> <td>TORCH, WELDING ROUGH CAST</td> <td>.090</td> <td>.060</td> </tr> </tbody> </table>	DECIMAL	2PLC	3PLC		MACHINE SAW, DRILL	.030	.015	SHEAR, PUNCH FORM	.060	.030	TORCH, WELDING ROUGH CAST	.090	.060	<table border="1"> <thead> <tr> <th>APPVD/DATE</th> <th>TITLE</th> </tr> </thead> <tbody> <tr> <td>DJR</td> <td>G2 REPLACEMENT DROP AWAY PIN ASSEMBLY</td> </tr> <tr> <td>6/23/05</td> <td></td> </tr> </tbody> </table>	APPVD/DATE	TITLE	DJR	G2 REPLACEMENT DROP AWAY PIN ASSEMBLY	6/23/05			THE INFORMATION HERE IS CONFIDENTIAL AND MUST NOT BE USED IN ANYWAY DETRIMENTAL TO THE INTEREST OF WOODBINE MFG.
DECIMAL	2PLC	3PLC																										
MACHINE SAW, DRILL	.030	.015																										
SHEAR, PUNCH FORM	.060	.030																										
TORCH, WELDING ROUGH CAST	.090	.060																										
APPVD/DATE	TITLE																											
DJR	G2 REPLACEMENT DROP AWAY PIN ASSEMBLY																											
6/23/05																												
						<table border="1"> <thead> <tr> <th>DRAFT</th> <th>ANGULAR</th> <th>SALES CATEGORY</th> <th>PRODUCT LINE</th> <th>SCALE</th> <th>FIN. WT.</th> <th>PART NO.</th> </tr> </thead> <tbody> <tr> <td>2"</td> <td>±1°</td> <td>45</td> <td>8115</td> <td>N</td> <td>0.05</td> <td>1010</td> </tr> </tbody> </table>	DRAFT	ANGULAR	SALES CATEGORY	PRODUCT LINE	SCALE	FIN. WT.	PART NO.	2"	±1°	45	8115	N	0.05	1010								
DRAFT	ANGULAR	SALES CATEGORY	PRODUCT LINE	SCALE	FIN. WT.	PART NO.																						
2"	±1°	45	8115	N	0.05	1010																						