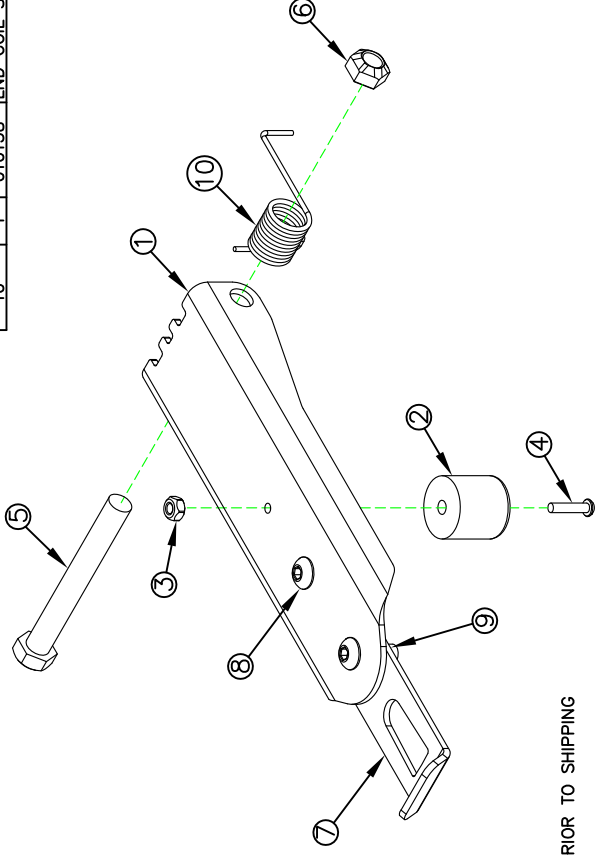


ITEM NO.	QTY.	PART NO.	DESCRIPTION
1	1	011229	LATCH BASE LND (G2-50)
2	1	010250	BUMPER 1.25 X 1.25
3	1	000602	10-24 NYLON LOCK NUT
4	1	010251	10-24 X 7/8" SLOT MACHINE SCREW
5	1	000544	1/2-13x4" HHCS GR5
6	1	000588	1/2-13 CROWN LOCK NUT
7	1	011230	LATCH TONGUE LND (G2-50)
8	2	000737	3/8-16 X 1 BUTTON HEAD CAP SCREW ZP
9	2	000553	3/8-16 LARGE FLANGE LOCK NUT
10	1	010138	LND COIL SPRING



NOTE: ASSEMBLE BASE AND TONGUE PRIOR TO SHIPPING

		THIRD ANGLE PROJECTION		FILENAME:		NOTES:		WOODBINE MFG. CO. BUS BROWN DRIVE WOODBINE, IOWA 51579	
				SYMBOLY PER ANSI Y14.5				712-647-2050	
		DECIMAL 2PLC 3PLC		DRAWN BY JCB					
		MACHINE .030 .015		DRAWN/DATE 1/25/10				<small>THE INFORMATION HERE IS CONFIDENTIAL AND MUST NOT BE USED IN ANYWAY BE PROMPTLY RETURNED TO THE INTEREST OF WOODBINE MFG.</small>	
B		11/11/11		533		JAR		TITLE G2 (LD) REPLACEMENT LATCH KIT-RIGHT	
A		1/25/10		259		JCB		PRODUCT LINE SCALE 1:3	
REV. DATE		DRAWN IN AUTOCAD		BY APPVD EON		CHANGE RECORD		FIN. WT. 1.09	
								PART NO. 10461	