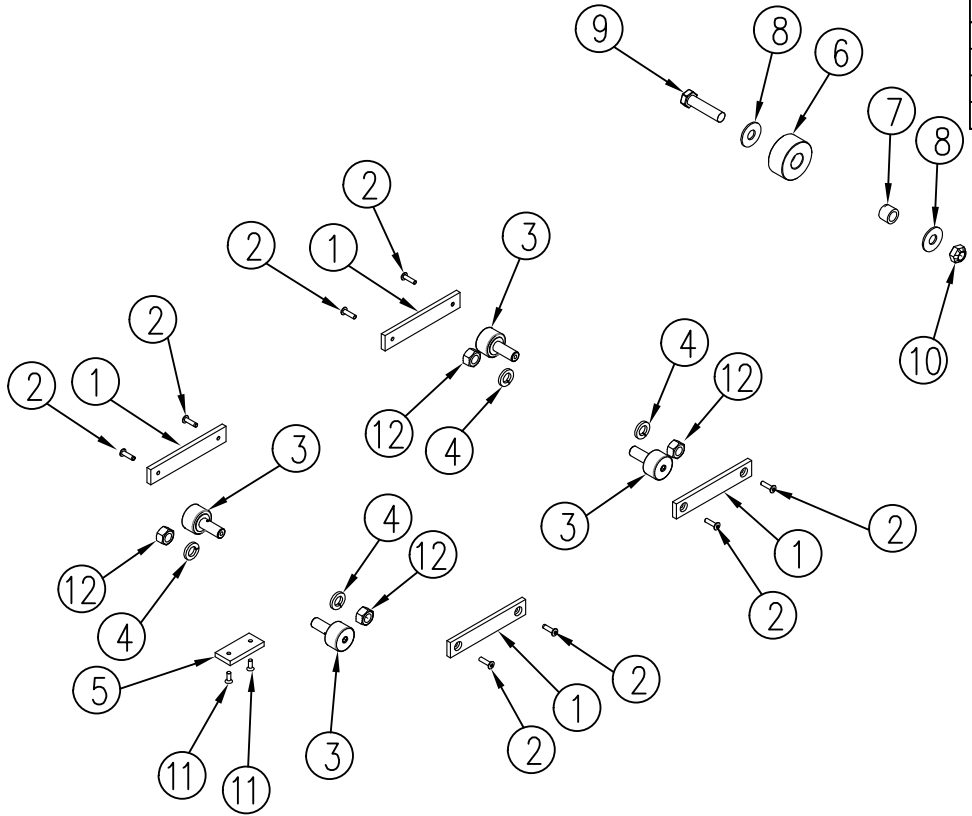


ITEM NO.	QTY.	PART NO.	DESCRIPTION
1	4	001006	1/4"x7/8"x5" POLYETHYLENE
2	8	010633	3/16"x.70" POP RIVET-STAINLESS
3	4	011903	1.25" CAM FOLLOWER(TX)
4	4	000573	1/2" SPRING LOCK WASHER
5	1	007634	1/4"x1"x2-1/4" WEAR MATERIAL
6	1	013463	2"ODx.938" NYLATRON ROLLER
7	1	013467	1/2"IDx3/4"ODx9/16" ZINC PLATED BUSHING (TX)
8	2	000580	7/16" USS FLATWASHER - ZINC PLATED
9	1	000522	1/2-13x2" HHCS GR5
10	1	000588	1/2" CROWN LOCK NUT
11	2	013077	10-24x1/2" FH PHIL SELF TAPPING SCREW 410SS
12	4	000560	1/2-20 GR5 SAE HEX NUT PLAIN



REV.	DATE	CHANGE RECORD	BY	APPVD	ECN	THIRD ANGLE PROJECTION	FILENAME:	SYMBOLY PER ANSI Y14.5	NOTES:	TITLE		
D	4/21/16	000580 WAS 013465	GDB		1621				<p>WOODBINE MFG. CO. BUS BROWN DRIVE WOODBINE, IOWA 51579</p> <p>THE INFORMATION HERE IS CONFIDENTIAL AND MUST NOT BE USED IN ANYWAY DETRIMENTAL TO THE INTEREST OF WOODBINE MFG.</p>	REPLACEMENT BEARING PAD SET(TX)		
C	9/9/14	REMOVED ACCOUNTING NOTE	GDB		1198		DECIMAL	2PLC			3PLC	DRAWN BY: GDB
B	4/14/14	ADDED ACCOUNTING NOTE	GDB		1100		MACHINE SAW,DRILL	.030			.015	DRAWN/DATE 2/19/14
A	2/19/14	DRAWN IN AUTOCAD	GDB		1044		SHEAR, PUNCH FORM	.060			.030	APPVD/DATE
							TORCH, WELDING ROUGH CAST	.090			.060	SALES CATEGORY
						DRAFT 2"	ANGULAR ±1"		PRODUCT LINE	SCALE N	FIN. WT.	PART NO. 013561