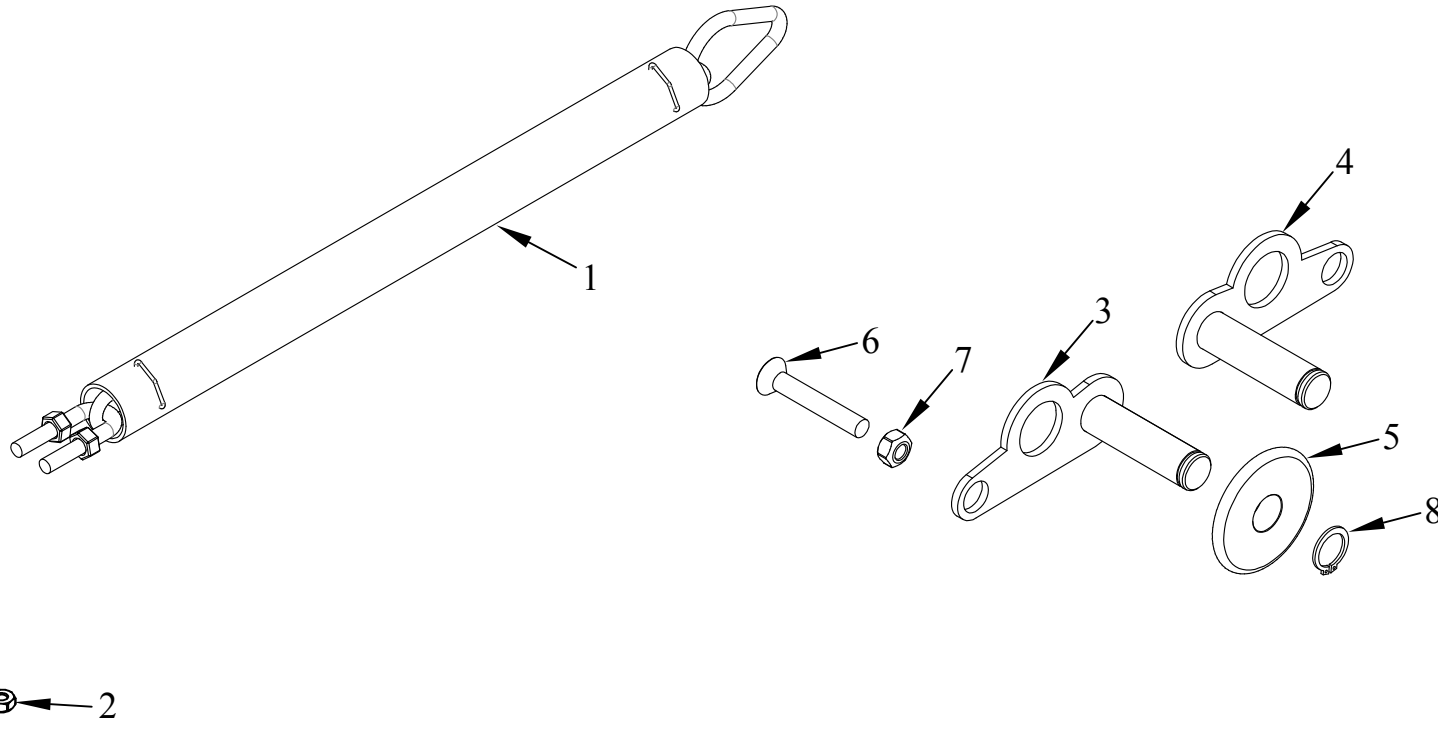


ITEM NO.	QTY.	PART NO.	DESCRIPTION
1	1	10133	34" TRAVEL CABLE CHAIN W/ COVER & U-BOLT
2	2	605	3/8-16 USS CROWN LOCK NUT
3	1	10342	DROP PIN ASSEMBLY (LEFT) MINI
4	1	10343	DROP PIN ASSEMBLY (RIGHT) MINI
5	1	10337	DROP CHAIN MACHINED WASHER
6	1	10467	5/16-18 X 2" FLHD SHCS - ZINC PLATED
7	1	606	5/16-18 USS CROWN LOCK NUT
8	1	615	5/8" EXTERNAL RETAINING RING-PLATED
9	1	95042	CABLE INSTALLATION INSTRUCTIONS (36-50)



REV.	DATE	CHANGE RECORD	BY	APPVD	ECN	THIRD ANGLE PROJECTION			FILENAME: E:\KITS(Repair Parts)\Cablegate\003840.dwg	SYMBOLY PER ANSI Y14.5	NOTES:	WOODBINE MFG. CO. BUS BROWN DRIVE WOODBINE, IOWA 51579 712-647-2050		
						DECIMAL	2PLC	3PLC						
E	1/19/15	UPDATED DESCRIPTION AND GRAPHIC	GDB		1303	MACHINE SAW, DRILL	.030	.015	DRAWN BY. DJR					
D	3/1/10	REMOVED PNO04768; ADDED PN010342, 010343, 010337, 010467, 000606	MTC		270	SHEAR, PUNCH FORM	.060	.030	DRAWN/DATE 11/16/04					
C	9/29/09	CHANGED TO REFLECT PRODUCTION	LSB	LSB	206	TORCH, WELDING ROUGH CAST	.090	.060						
						DRAFT 2°		ANGULAR ±1°				SCALE N	FIN. WT.	PART NO. 3840

THE INFORMATION HERE IS CONFIDENTIAL AND MUST NOT BE USED IN ANYWAY DETRIMENTAL TO THE INTEREST OF WOODBINE MFG.