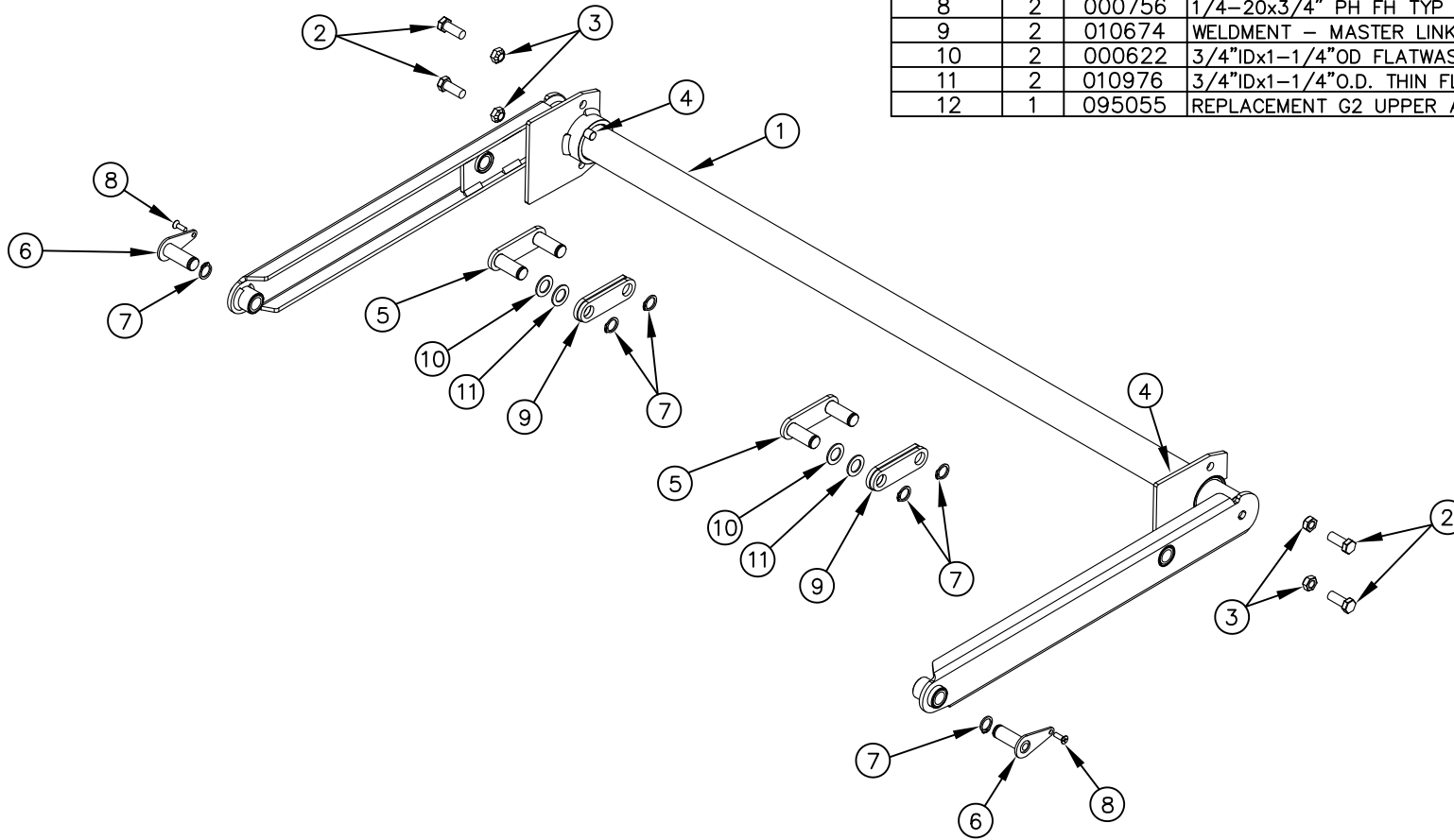


ITEM NO.	QTY.	PART NO.	DESCRIPTION
1	1	014162	G2 UPPER ARM ASSEMBLY COMP (81-42)
2	4	000521	1/2-13x1-1/4" HHCS GR5
3	4	000588	1/2-13 CROWN LOCK NUT
4	2	007497	.50"DIA.x.50"CYL SPACER
5	2	010673	G2 CLEVIS WELDMENT (42)
6	2	002879	G2 0.75"DIA.x2.109"PIN W/KEEPER
7	6	002025	3/4" EXTERNAL SNAP RING(G2) PLATED
8	2	000756	1/4-20x3/4" PH FH TYP F SS
9	2	010674	WELDMENT - MASTER LINK GUIDE (G2-42)
10	2	000622	3/4"IDx1-1/4"OD FLATWASHER(650)PLATED
11	2	010976	3/4"IDx1-1/4"O.D. THIN FLATWASHER (ZP)
12	1	095055	REPLACEMENT G2 UPPER ARM ASSEMBLY INSTRUCTIONS



						THIRD ANGLE PROJECTION	FILENAME:	WOODBINE MFG. CO. BUS BROWN DRIVE WOODBINE, IOWA 51579					
							SYMBOLY PER ANSI Y14.5	NOTES:					
						DECIMAL	2PLC	3PLC	DRAWN BY: AAS				
						MACHINE SAW, DRILL	.030	.015	DRAWN/DATE 9/6/24				
						SHEAR, PUNCH FORM	.060	.030	APPVD/DATE				
						TORCH, WELDING ROUGH CAST	.090	.060	TITLE G2 81-42 REPAIR UPPER ARM ASSEMBLY				
A	9/6/24	RELEASED TO PRODUCTION			AAS	3051	DRAFT 2"	ANGULAR ±1"	SALES CATEGORY	PRODUCT LINE	SCALE	FIN. WT. 1:12	PART NO. 18315
REV.	DATE	CHANGE RECORD			BY	APPVD	ECN						

THE INFORMATION HERE IS CONFIDENTIAL AND MUST NOT BE USED IN ANYWAY DETRIMENTAL TO THE INTEREST OF WOODBINE MFG.

