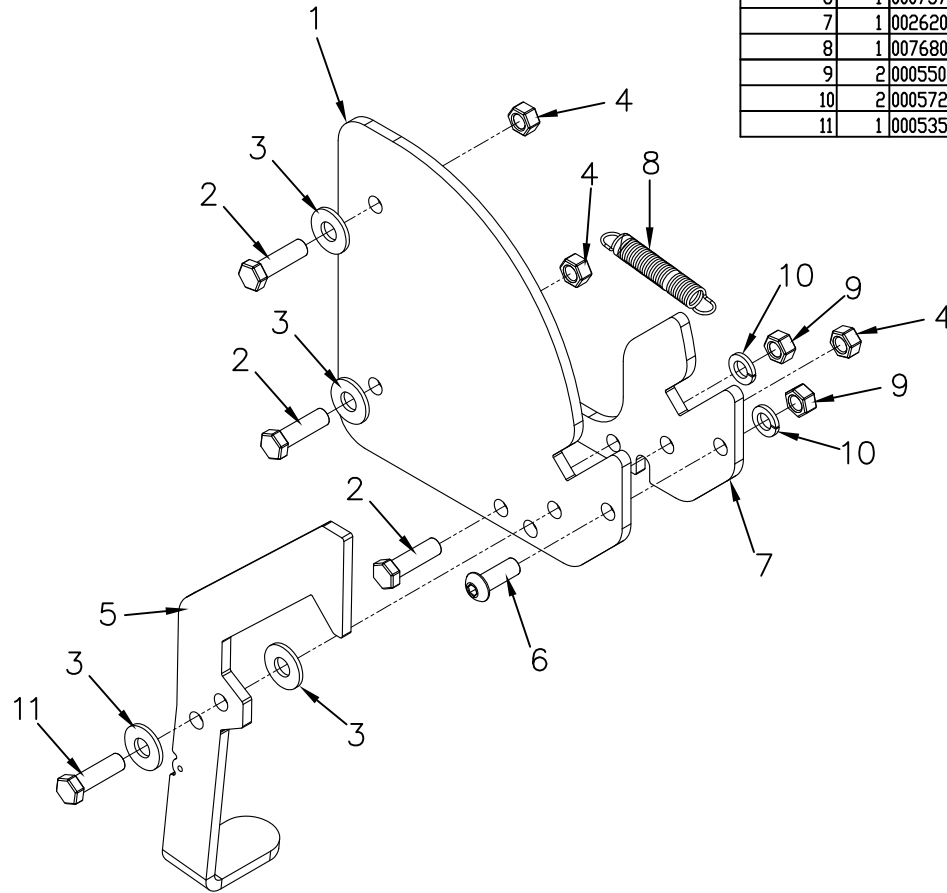


ITEM NO.	QTY.	PART NO.	DESCRIPTION
1	1	002592	.25"X8"X8.13" AL RAIL LATCH PL (ZINC)
2	3	000510	3/8-16x1-1/4" HHCS GR5
3	5	000575	3/8 USS FLAT WASHER
4	3	000597	3/8-16 2 WAY LOCK NUT
5	1	002619	.25" RAIL LATCH HDL-ZINC PLATED
6	1	000737	3/8-16X1" BHCS GR5-ZINC PLATED
7	1	002620	RAIL LATCH WEAR PLATE-RT-ZINC PLATED
8	1	007680	RAIL LATCH SPRING-STAINLESS STEEL
9	2	000550	3/8-16 GR HEX NUT
10	2	000572	3/8" SPRING LOCK WASHER
11	1	000535	3/8-16x1-1/2" HHCS GR5



				THIRD ANGLE PROJECTION			FILENAME:		WOODBINE MFG. CO.															
							SYMBOLY PER ANSI Y14.5		BUS BROWN DRIVE															
				<table border="1"> <tr> <td>DECIMAL</td> <td>2PLC</td> <td>3PLC</td> </tr> <tr> <td>MACHINE SAW, DRILL</td> <td>.030</td> <td>.015</td> </tr> <tr> <td>SHEAR, PUNCH FORM</td> <td>.060</td> <td>.030</td> </tr> <tr> <td>TORCH, WELDING ROUGH CAST</td> <td>.090</td> <td>.060</td> </tr> </table>			DECIMAL	2PLC	3PLC	MACHINE SAW, DRILL	.030	.015	SHEAR, PUNCH FORM	.060	.030	TORCH, WELDING ROUGH CAST	.090	.060	DRAWN BY.		NOTES:		WOODBINE, IOWA 51579	
DECIMAL	2PLC	3PLC																						
MACHINE SAW, DRILL	.030	.015																						
SHEAR, PUNCH FORM	.060	.030																						
TORCH, WELDING ROUGH CAST	.090	.060																						
							DJR		712-647-2050															
							DRAWN/DATE																	
							7/10/03		<small>THE INFORMATION HERE IS CONFIDENTIAL AND MUST NOT BE USED IN ANYWAY DETRIMENTAL TO THE INTEREST OF WOODBINE MFG.</small>															
							APPVD/DATE		TITLE															
							3/10/09		ALUMINUM RAILGATE REPLACEMENT LATCH PLATE(RIGHT)															
				DRAFT 2'			ANGULAR ±1'		SALES CATEGORY		PRODUCT LINE		SCALE		FIN. WT.		PART NO.							
							45		8950		N		6.01		2006									
A	7/15/08	CHANGED AND REDRAWN		LSB	KGJ																			
B	3/10/09	REMOVED (1) PN 575; REPLACED (1) PN 510 WITH (1) 535; REPLACED PN 2615 WITH 2592		JCB	JCB																			
REV.	DATE	CHANGE RECORD		BY	APPVD	ECN																		