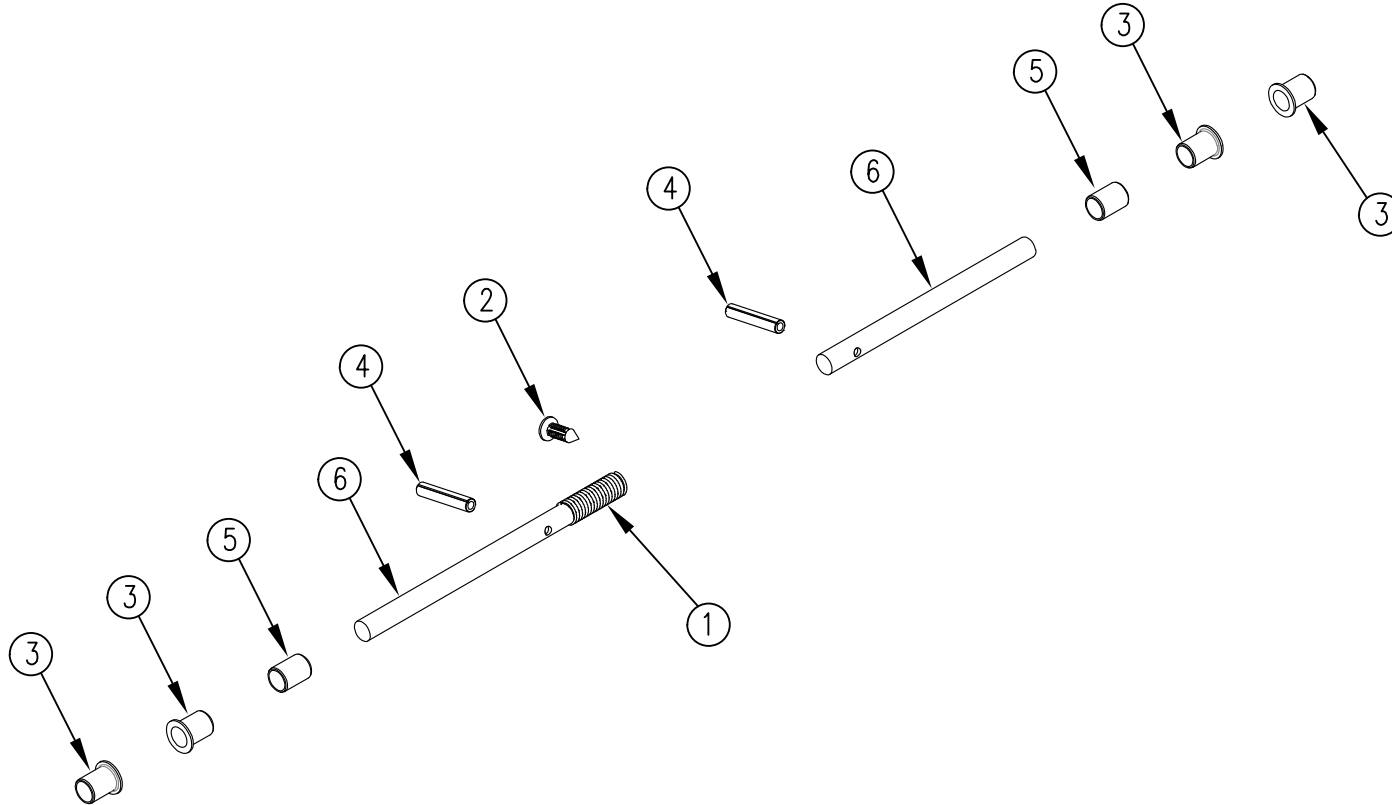


ITEM NO.	QTY.	PART NO.	DESCRIPTION
1	1	010361	2" COMPRESSION SPRING(.36"OD)
2	1	014056	CHRISTMAS TREE CLIP
3	4	014465	3/8" x 5/16" x 1/2" PLASTIC FLANGE BUSHING
4	2	014466	3/16"DIA.x1" ROLL PIN PLATED
5	2	014468	3/8"ODx5/16"IDx1/2" PLASTIC BUSHING
6	2	014471	ZINC PLATED CART STOP HINGE(.31"DIAx4")



				THIRD ANGLE PROJECTION			FILENAME:		WOODBINE MFG. CO.															
							SYMBOLY PER ANSI Y14.5		BUS BROWN DRIVE															
				<table border="1"> <tr> <th>DECIMAL</th> <th>2PLC</th> <th>3PLC</th> </tr> <tr> <td>MACHINE SAW,DRILL</td> <td>.030</td> <td>.015</td> </tr> <tr> <td>SHEAR, PUNCH FORM</td> <td>.060</td> <td>.030</td> </tr> <tr> <td>TORCH, WELDING ROUGH CAST</td> <td>.090</td> <td>.060</td> </tr> </table>			DECIMAL	2PLC	3PLC	MACHINE SAW,DRILL	.030	.015	SHEAR, PUNCH FORM	.060	.030	TORCH, WELDING ROUGH CAST	.090	.060	DRAWN BY. GDB		NOTES:		WOODBINE, IOWA 51579	
DECIMAL	2PLC	3PLC																						
MACHINE SAW,DRILL	.030	.015																						
SHEAR, PUNCH FORM	.060	.030																						
TORCH, WELDING ROUGH CAST	.090	.060																						
							DRAWN/DATE 8/7/15		712-647-2050															
							APPVD/DATE																	
A	8/7/15	RELEASED TO PRODUCTION		GDB		1331	TITLE		<small>THE INFORMATION HERE IS CONFIDENTIAL AND MUST NOT BE USED IN ANYWAY DETRIMENTAL TO THE INTEREST OF WOODBINE MFG.</small>															
REV.	DATE	CHANGE RECORD		BY	APPVD	ECN	DRAFT 2'	ANGULAR ±1'	SALES CATEGORY	PRODUCT LINE	SCALE 1:1	FIN. WT.	PART NO. 14543											