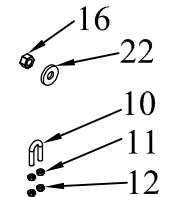


ITEM NO.	QTY.	PART NO.	DESCRIPTION
1	1	002082	LND PLATFORM COMPLETE(80)
2	2	006043	LND INSERT LATCH SPRING-2.50' LENGTH
3	4	000990	1/4-20 LINKAGE SHOULDER BOLT(LND)
4	1	006974	INSERT LINK SHORT COMPLETE(LND)
5	1	000991	5/16-18 INSERT LATCH PIVOT BOLT-LND
6	1	006831	INSERT HANDLE COMPLETE
7	1	006977	INSERT LINK LONG COMPLETE(80LND)
8	2	006059	12GA.x2.63"x5"ACCESS COVER(LND)
9	8	000620	1/4-20x1/2" PN HD TY F S(G2)
10	2	004727	3/8" U-BOLT(SHORT)x16x7/8x1-1/2
11	4	000550	3/8-16 GR5 HEX NUT
12	4	000605	3/8-16 USS CROWN LOCK NUT
13	1	007737	1/2"DIA.x1"COTTERLESS HITCH PIN
14	1	005814	1/2" TORSION SPRING(80)
15	2	000587	1/2-13x1" HHCS GR5
16	3	000588	1/2-13 CROWN LOCK NUT
17	1	007435	PASS SIDE SQ SPRING HOLDER(80-92)
18	1	007433	DRIVERS SIDE SQ. SPRING HOLDER
19	1	000573	1/2" SPRING LOCK WASHER
20	1	002388	INSERT LATCH DEADMAN (LND)
21	2	002371	10GA.x1.13"x1.63" TUBE CAP(BR)
22	2	000576	1/2" USS FLAT WASHER
23	1	004538	LANYARD FOR NEW LND-STAINLESS
24	1	000540	10-32X3/8" PH THRD CUTTER



REV.	DATE	CHANGE RECORD	BY	APPVD	ECN	DRAFT	ANGULAR	SCALE	FIN. WT.	PART NO.
E	4/21/14	CHANGED PN7434 TO PN7435	MTC		1001	2"	±1°	N		9489
D	4/30/12	ADDED (1) 4538 & (1) 540	JCB		654					
C	10/27/10	REPLACED (2) 567 WITH (2) 576; REMOVED (1) 604; ADDED (1) 587	JCB		359					
B	12/16/09	REPLACED KITS W/ INDIVIDUAL PARTS, AND 1090 W/ 5814; ADDED (1) 2388, (2) 2371, (2) 576, (2) 588	JCB		245					
						THIRD ANGLE PROJECTION	FILENAME:		WOODBINE MFG. CO. BUS BROWN DRIVE WOODBINE, IOWA 51579	
							SYMBOLY PER ANSI Y14.5		NOTES:	
							DECIMAL	2PLC		
						MACHINE SAW, DRILL	.030	.015	DRAWN BY: DJR	
						SHEAR, PUNCH FORM	.060	.030		
						TORCH, WELDING ROUGH CAST	.090	.060	TITLE 80 LND REPLACEMENT PLATFORM	