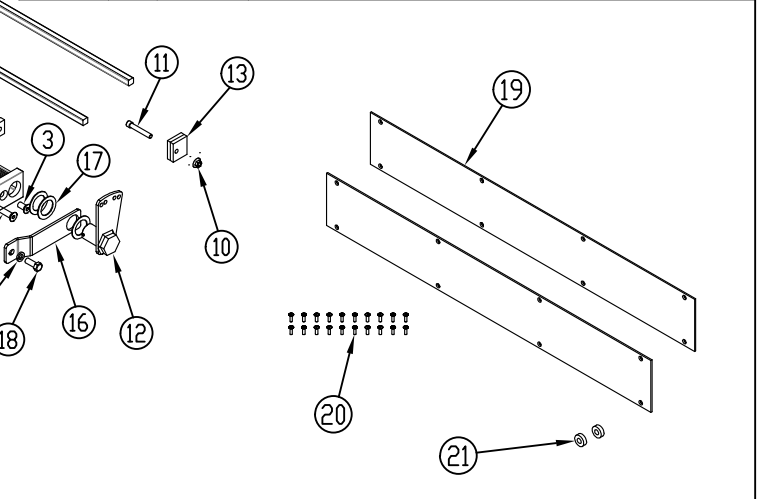


ITEM NO.	QTY.	PART NO.	DESCRIPTION
1	1	012867	89 55+12 ALUM TA PLATFORM COMPLETE(TX)
2	2	013593	1/2-13X2' FLHD SHCS-ZINC PLATED
3	2	013344	1/2-13X1' FLHD SHCS-ZINC PLATED
4	1	013105	PLATED 5/8" SQUARE RAIL DUAL TORSION SPRING HOLDER
5	1	013106	PLATED 1/2" SQUARE RAIL DUAL TORSION SPRING HOLDER
6	4	000573	1/2" SPRING LOCK WASHER
7	2	000551	1/2-13 GR5 HEX NUT (ZINC)
8	1	013595	5/8"x89" RAIL TORSION SPRING (DUAL)
9	1	013594	1/2"x89" RAIL TORSION SPRING (DUAL)
10	2	000553	3/8-16 LARGE FLANGE LOCK NUT
11	2	012649	3/8-16x2-1/2" USS SOC HD CAP
12	1	007265	PLATED 1/2" TORSION SPRING HOLDER-PASSENGER
13	4	012238	.375"x1.75"x2" ALUM RAIL FLAT STOP(TX)
14	2	009540	CAUTION DECAL - TORSION SPRING
15	1	007019	PLATED 5/8" TORSION SPRING HOLDER- PASSENGER
16	2	013104	PLATED RAIL SPRING ARM(FIXED-DS)
17	6	000582	1-1/2" NARROW RIM MACHINE BUSHING
18	2	000521	1/2-13x1-1/4" HHCS GR5
19	2	013086	.13"x5"x36" DUAL TORSION SPRING COVER (TX)
20	16	004733	3/16"x5/8" PDP RIVET
21	2	013291	5/16" TORSION SPRING SPACER
22	2	004721	1/8"x3/4" COTTER PIN
23	1	095133	(R)REPAIR TX RAILGATE TA SPRING INSTRUCTIONS



REV.	DATE	CHANGE RECORD	BY	APPVD	ECN	DRAFT	ANGULAR	SALES CATEGORY	PRODUCT LINE	SCALE	FIN. WT.	PART NO.
C	9/2/15	4733 WAS 13074	GDB		1474	MACHINE SAW,DRILL	.030 .015					
B	8/4/15	013104 WAS 011155	GDB		1458	SHEAR, PUNCH FORM	.060 .030					
A	2/18/14	RELEASED TO PRODUCTION	GDB		1044	TORCH, WELDING ROUGH CAST	.090 .060					
						DRAFT 2°	ANGULAR ±1°					
						THIRD ANGLE PROJECTION		FILENAME:		WOODBINE MFG. CO.		
								SYMBOLY PER ANSI Y14.5		BUS BROWN DRIVE		
								DRAWN BY: GDB		WOODBINE, IOWA 51579		
								DRAWN/DATE 2/18/14		712-647-2050		
								APPVD/DATE				
								TITLE		THE INFORMATION HERE IS CONFIDENTIAL AND MUST NOT BE USED IN ANYWAY DETRIMENTAL TO THE INTEREST OF WOODBINE MFG.		
										(89) 55+12 TA REP EA PLFRM (TX)		
								PRODUCT LINE		PART NO. 013099		
								SCALE 1:15				