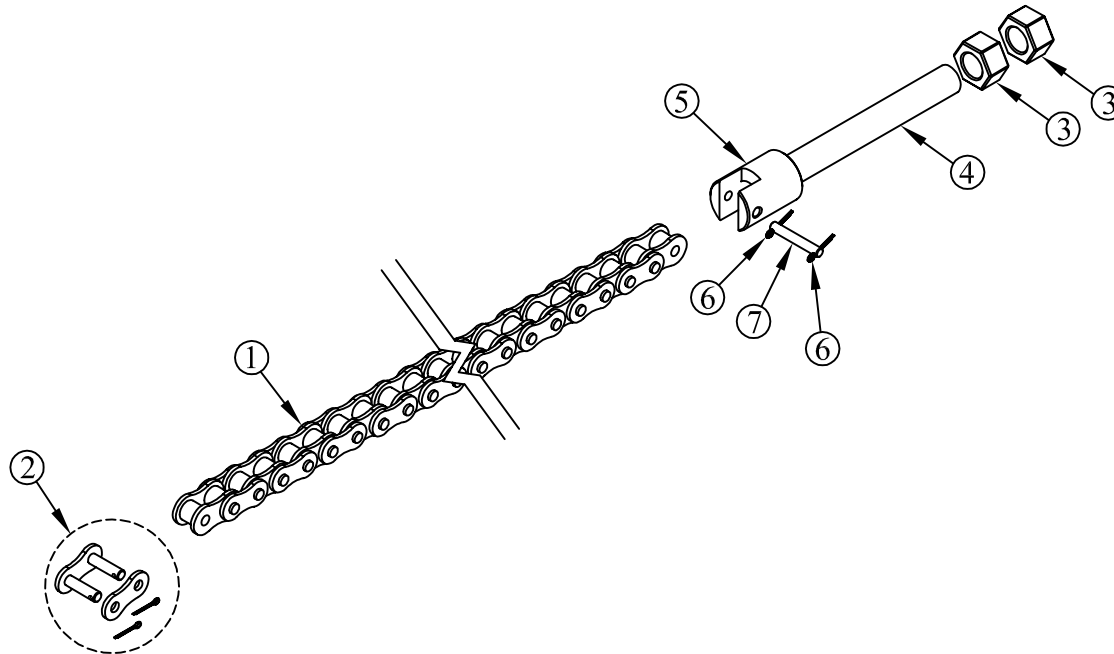


ITEM NO.	QTY.	PART NO.	DESCRIPTION
1	1	013817	329 PITCH ROLLER CHAIN(AB)DRIVER'S SIDE(RTC85)
2	1	007661	50 SERIES CONNECTING LINK
3	2	000552	5/8-18 SAE HEX FIN NUT
4	1	007667	5/8"x5-3/4" CHAIN ADJUSTMENT BOLT
5	1	007666	1.12"DIA.x1.5" RAIL CHAIN TENSIONER
6	2	009967	1/16"x1/2" COTTER PIN
7	1	009867	0.200x1.344" HEAT CHAIN CLEVIS PIN
8	1	095041	ROLLER CHAIN REPLACEMENT GUIDE



						THIRD ANGLE PROJECTION	FILENAME:	WOODBINE MFG. CO. BUS BROWN DRIVE WOODBINE, IOWA 51579						
							SYMBOLY PER ANSI Y14.5	NOTES:						
						DECIMAL 2PLC 3PLC	DRAWN BY.	712-647-2050						
						MACHINE SAW, DRILL .030 .015	GDB							
						SHEAR, PUNCH FORM .060 .030	DRAWN/DATE	THE INFORMATION HERE IS CONFIDENTIAL AND MUST NOT BE USED IN ANYWAY DETRIMENTAL TO THE INTEREST OF WOODBINE MFG.						
						TORCH, WELDING ROUGH CAST .090 .060	4/30/14	APPVD/DATE	TITLE 329 PITCH REPLACEMENT ROLLER CHAIN ABOVE BED DRIVER'S SIDE(RTC85)					
A	4/30/14	RELEASED TO PRODUCTION			GDB	1113								
REV.	DATE	CHANGE RECORD			BY	APPVD	ECN	DRAFT 2"	ANGULAR ±1"	SALES CATEGORY	PRODUCT LINE	SCALE 1:4	FIN. WT.	PART NO. 013826