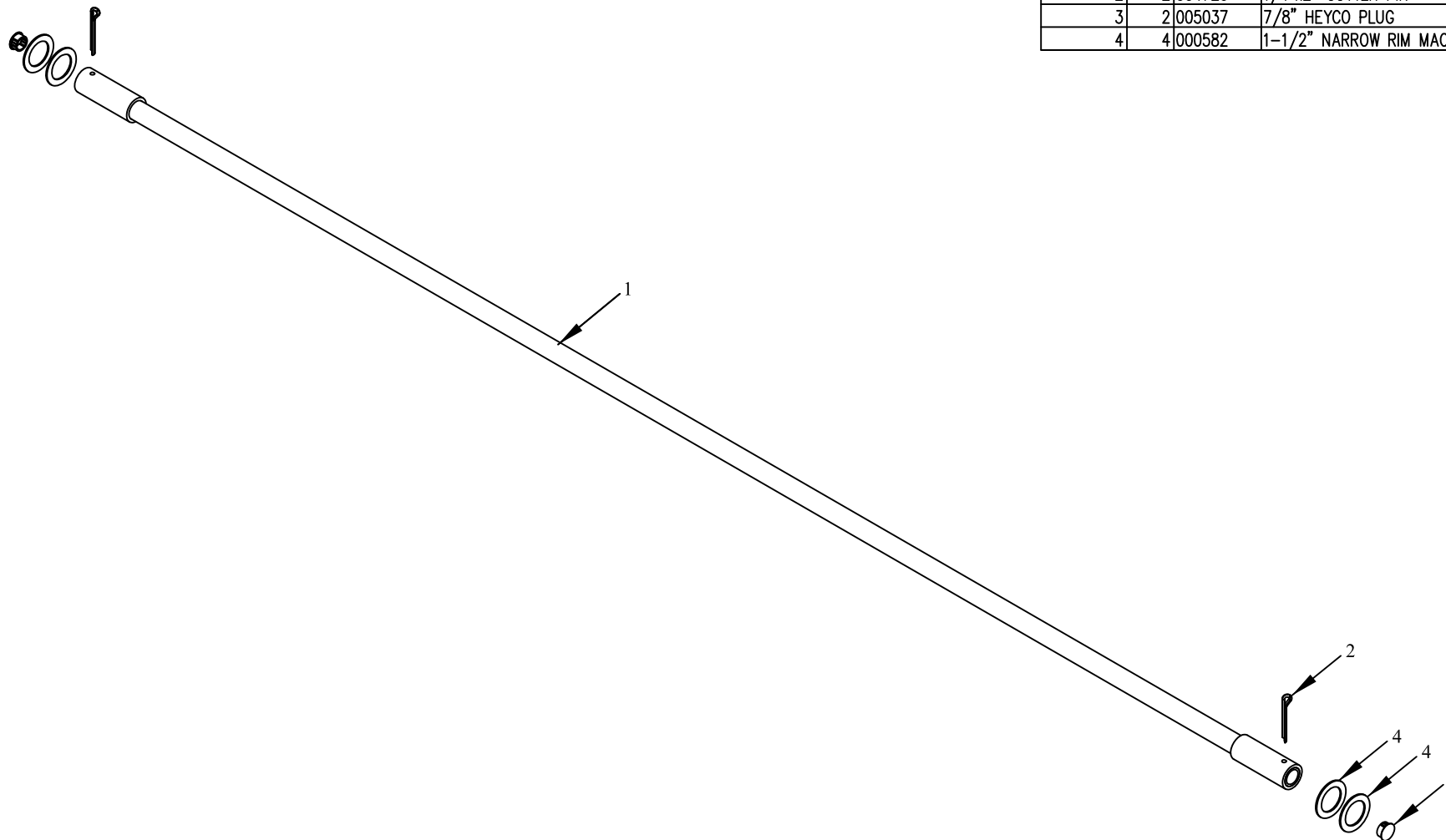


ITEM NO.	QTY.	PART NO.	DESCRIPTION
1	1	001919	.88" I.D. x 1.12" O.D. x 92.0" TUBE ASY.(89)
2	2	004720	1/4" x 2" COTTER PIN
3	2	005037	7/8" HEYCO PLUG
4	4	000582	1-1/2" NARROW RIM MACHINE BUSHING



REV.	DATE	CHANGE RECORD	BY	APPVD	ECN	DRAFT	ANGULAR	SALES CATEGORY	PRODUCT LINE	SCALE	FIN. WT.	PART NO.
						2'	±1°	45	3941	N		6434

THIRD ANGLE PROJECTION		
DECIMAL	2PLC	3PLC
MACHINE SAW, DRILL	.030	.015
SHEAR, PUNCH FORM	.060	.030
TORCH, WELDING ROUGH CAST	.090	.060

FILENAME:	NOTES:
SYMBOLY PER ANSI Y14.5	
DRAWN BY. DJR	
DRAWN/DATE 7/28/03	
APPVD/DATE	TITLE 92" REPLACEMENT HINGE TUBE(89)
SALES CATEGORY 45	PRODUCT LINE 3941
SCALE N	FIN. WT.
PART NO. 6434	

WOODBINE MFG. CO.  
 BUS BROWN DRIVE  
 WOODBINE, IOWA 51579  
 712-647-2050

THE INFORMATION HERE IS CONFIDENTIAL AND MUST NOT BE USED IN ANYWAY DETRIMENTAL TO THE INTEREST OF WOODBINE MFG.