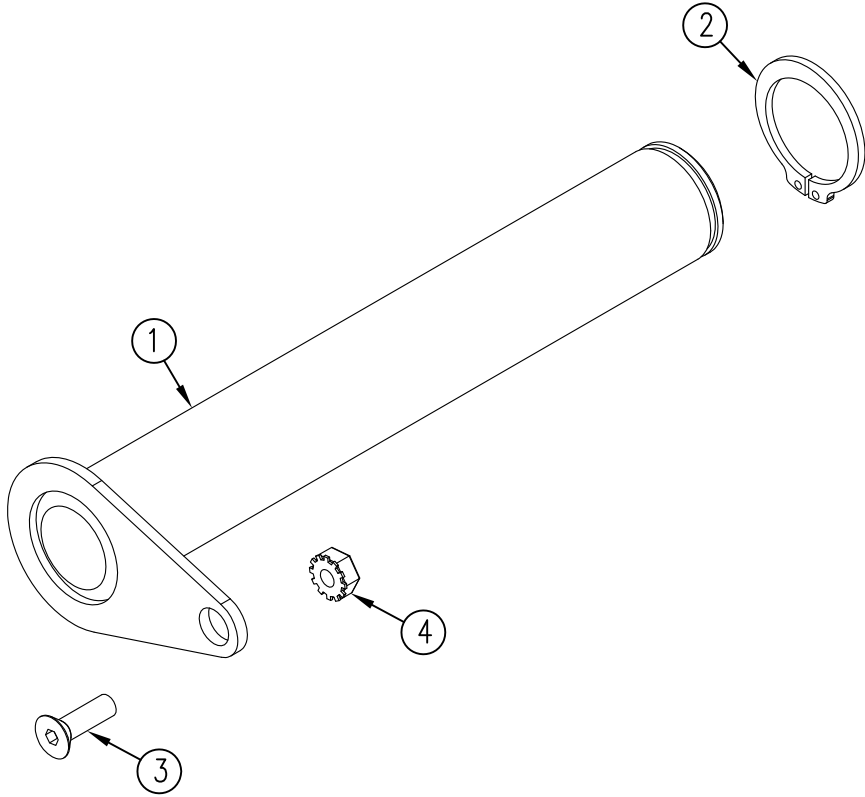


ITEM NO.	QTY.	PART NO.	DESCRIPTION
1	1	003055	CANTILEVER LIFT ARM PIN W/ KEEPER
2	1	010316	1.250" EXTERNAL SNAP RING ZP
3	1	011080	1/4-20x3/4" FLAT SOCKET CAP SCREW, ZP
4	1	011081	1/4-20 KEPS NUT ZINC



						THIRD ANGLE PROJECTION	FILENAME:	WOODBINE MFG. CO.	
							SYMBOLY PER ANSI Y14.5	BUS BROWN DRIVE	
						DECIMAL 2PLC 3PLC	DRAWN BY: JCB	WOODBINE, IOWA 51579	
						MACHINE SAW, DRILL .030 .015		NOTES:	
						SHEAR, PUNCH FORM .060 .030		DRAWN/DATE 7/27/11	712-647-2050
						TORCH, WELDING ROUGH CAST .090 .060		APPVD/DATE	
A	7/27/11	RELEASED TO PRODUCTION	JCB		450		TITLE	THE INFORMATION HERE IS CONFIDENTIAL AND MUST NOT BE USED IN ANYWAY DETRIMENTAL TO THE INTEREST OF WOODBINE MFG.	
REV.	DATE	CHANGE RECORD	BY	APPVD	ECN	DRAFT 2'	SALES CATEGORY	1-1/4" REPLACEMENT CANTILEVER LIFT ARM PIN	
						ANGULAR ±1'	PRODUCT LINE	SCALE 1:2	
							FIN. WT.	PART NO. 11280	