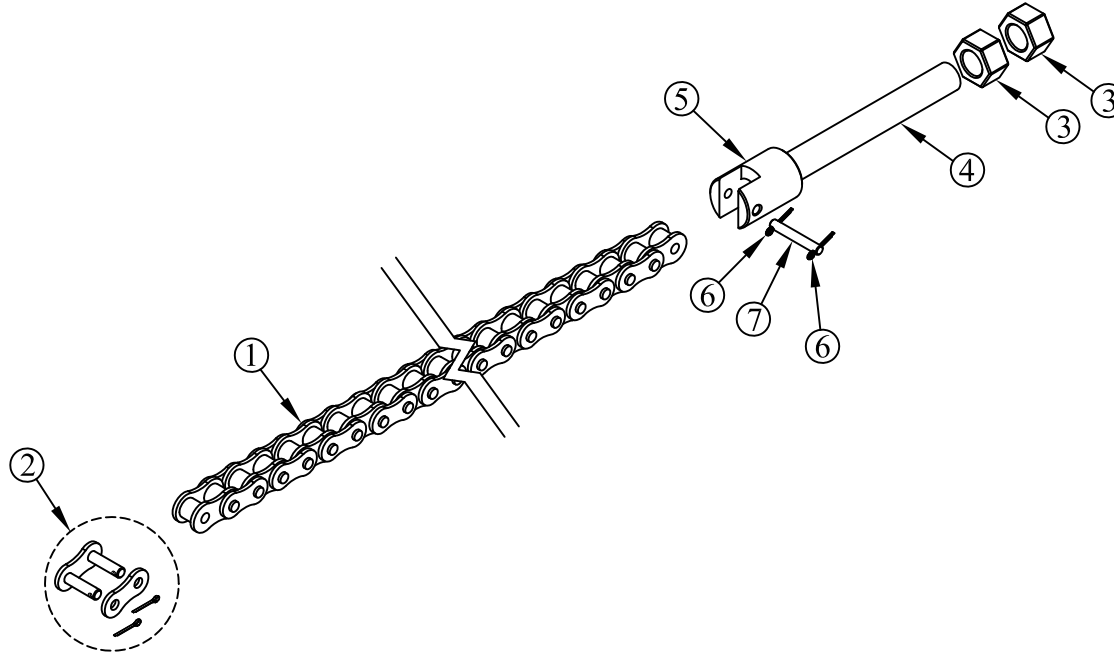


ITEM NO.	QTY.	PART NO.	DESCRIPTION
1	1	013628	347 PITCH ROLLER CHAIN(AB-DRV.SIDE) 89-36' BH W 20' GRD CLEAR
2	1	007661	50 SERIES CONNECTING LINK
3	2	000552	5/8-18 SAE HEX FIN NUT
4	1	007667	5/8"x5-3/4" CHAIN ADJUSTMENT BOLT
5	1	007666	1.12"DIA.x1.5" RAIL CHAIN TENSIONER
6	2	009967	1/16"x1/2" COTTER PIN
7	1	009867	0.200x1.344" HEAT CHAIN CLEVIS PIN
8	1	095041	ROLLER CHAIN REPLACEMENT GUIDE



REV.		DATE	CHANGE RECORD	BY	APPVD	ECN	THIRD ANGLE PROJECTION			FILENAME:	NOTES:		WOODBINE MFG. CO. BUS BROWN DRIVE WOODBINE, IOWA 51579	
A	4/9/15	RELEASED TO PRODUCTION			JCB	1366		DECIMAL MACHINE SAW,DRILL SHEAR, PUNCH FORM TORCH, WELDING ROUGH CAST	2PLC .030 .060 .090	3PLC .015 .030 .060	SYMBOLY PER ANSI Y14.5 DRAWN BY. JCB DRAWN/DATE 4/9/15 APPVD/DATE	THE INFORMATION HERE IS CONFIDENTIAL AND MUST NOT BE USED IN ANYWAY DETRIMENTAL TO THE INTEREST OF WOODBINE MFG.		712-647-2050
							DRAFT	ANGULAR		SALES CATEGORY	PRODUCT LINE	SCALE	FIN. WT.	PART NO.
							2'	±1'				1:4		14358