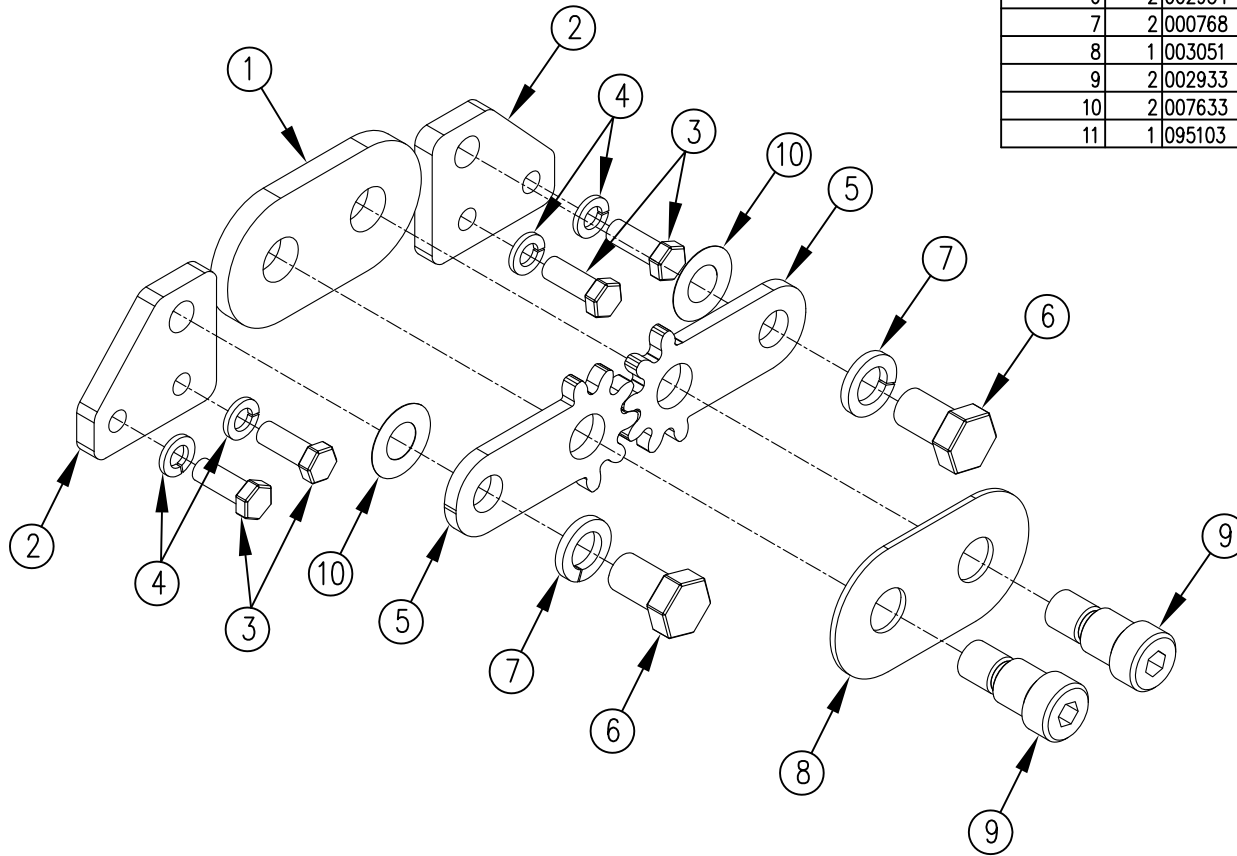


ITEM NO.	QTY.	PART NO.	DESCRIPTION
1	1	002597	RAIL HINGE PLATE--RF
2	2	003052	GEAR ANCHOR PLATE (ZP)
3	4	000509	3/8-16x1"HHCS GR5
4	4	000572	3/8" SPRING LOCK WASHER
5	2	006375	0.25 R-FOLD HINGE GEAR PLATE (ZINC)
6	2	002934	5/8-11x1"HHCS GR5
7	2	000768	5/8" SPRING LOCK WASHER
8	1	003051	EXTERNAL HINGE COVER--RF ZP
9	2	002933	3/4" X 3/4" PIVOT SHOULDER BOLT (RF)
10	2	007633	5/8" I.D. NYLATRON WASHER (EA) 1-1/4" OD
11	1	095103	(R)R-FOLD HINGE REPLACEMENT INSTRUCTIONS



REV.	DATE	CHANGE RECORD	BY	APPVD	ECN	DRAFT	ANGULAR	SCALE	FIN. WT.	PART NO.
E	5/22/12	ADDED PN007633 AND PN095103	MTC		666	2'	±1°	1:3	3.78	6466
D	4/28/09	REDESIGNED RF HINGE	JCB	JCB						
C	12/2/08	REPLACED PN000576 WITH PN000580	MTC	MTC						
B	8/15/08	UPDATED BOM	JCB	KGJ						
						THIRD ANGLE PROJECTION	FILENAME:	NOTES:		
							SYMBOLY PER ANSI Y14.5			
						DECIMAL 2PLC 3PLC	DRAWN BY: JCB			
						MACHINE SAW, DRILL	DRAWN/DATE 8/28/07			
						SHEAR, PUNCH FORM		REPLACEMENT R-FOLD HINGE KIT		
						TORCH, WELDING ROUGH CAST				
								WOODBINE MFG. CO. BUS BROWN DRIVE WOODBINE, IOWA 51579		
								712-647-2050		
								THE INFORMATION HERE IS CONFIDENTIAL AND MUST NOT BE USED IN ANYWAY DETRIMENTAL TO THE INTEREST OF WOODBINE MFG.		