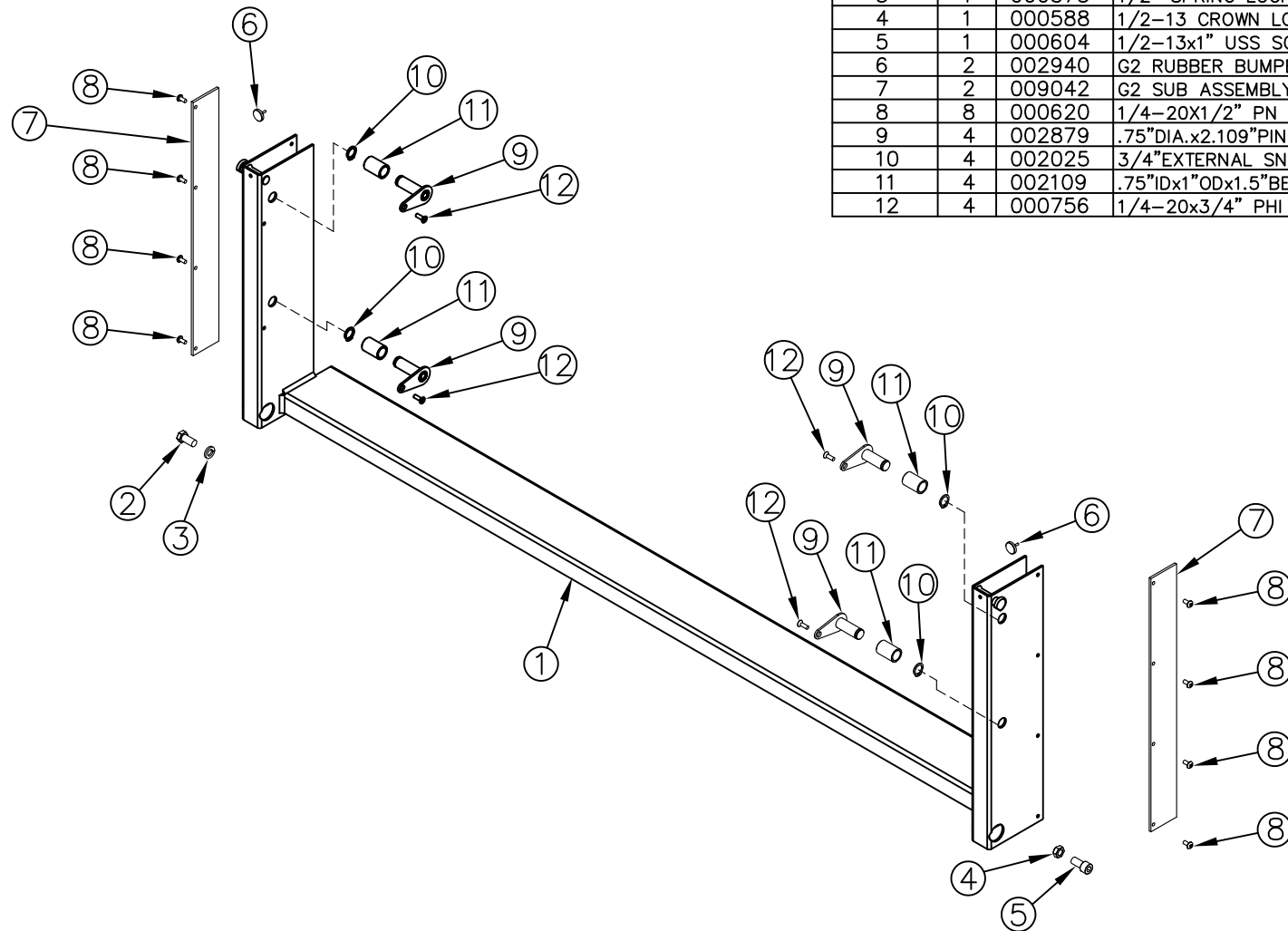


ITEM NO.	QTY.	PART NO.	DESCRIPTION
1	1	014159	G2 SUB ASSEMBLY(87-42)
2	1	000587	1/2-13x1" HHCS GR5
3	1	000573	1/2" SPRING LOCK WASHER
4	1	000588	1/2-13 CROWN LOCK NUT
5	1	000604	1/2-13x1" USS SOC HD CAP S.S.
6	2	002940	G2 RUBBER BUMPER
7	2	009042	G2 SUB ASSEMBLY BELTING 21-3/8"
8	8	000620	1/4-20X1/2" PN HD TY FS(G2)
9	4	002879	.75"DIA.x2.109"PIN w/FLAT HEAD KEEPER(G2)
10	4	002025	3/4"EXTERNAL SNAP RING (G2) PLATED
11	4	002109	.75"IDx1"ODx1.5"BEARING (G2)
12	4	000756	1/4-20x3/4" PHI FH TYPE F SS



				THIRD ANGLE PROJECTION			FILENAME:				WOODBINE MFG. CO. BUS BROWN DRIVE WOODBINE, IOWA 51579																						
							SYMBOLY PER ANSI Y14.5								NOTES:																		
				<table border="1"> <tr> <th>DECIMAL</th> <th>2PLC</th> <th>3PLC</th> </tr> <tr> <td>MACHINE SAW, DRILL</td> <td>.030</td> <td>.015</td> </tr> <tr> <td>SHEAR, PUNCH FORM</td> <td>.060</td> <td>.030</td> </tr> <tr> <td>TORCH, WELDING ROUGH CAST</td> <td>.090</td> <td>.060</td> </tr> </table>			DECIMAL	2PLC	3PLC	MACHINE SAW, DRILL	.030	.015	SHEAR, PUNCH FORM	.060					.030	TORCH, WELDING ROUGH CAST	.090	.060	DRAWN BY: AAS				APPVD/DATE 9/6/24				THE INFORMATION HERE IS CONFIDENTIAL AND MUST NOT BE USED IN ANYWAY DETRIMENTAL TO THE INTEREST OF WOODBINE MFG.		
DECIMAL	2PLC	3PLC																															
MACHINE SAW, DRILL	.030	.015																															
SHEAR, PUNCH FORM	.060	.030																															
TORCH, WELDING ROUGH CAST	.090	.060																															
A				9/6/24			RELEASED TO PRODUCTION				AAS																						
REV.				DATE			CHANGE RECORD				BY			APPVD			ECN			DRAFT 2"		ANGULAR ±1"		SALES CATEGORY		PRODUCT LINE		SCALE 1:12		FIN. WT.		PART NO. 18313	